

WALLY LOVE



WALLY LOVE

SPECIFICATION.



Asking price
EUR 3.950.000 (EU VAT paid)



Built
2007 (refitted 2022), Wally Yachts, Italy



Length
30,5m (100ft)



Beam
6,8m (22,3ft)



Draft min/max
-/4,9m (16,1ft)



Displacement
60 tonnes



Cruising speed
10,5 knots



Maximum speed
12,5 knots



Flag
Malta



Lying
West Mediterranean



Class
RINA Services S.p.A. (RINA) RINA



Exterior designer
German Frers



Interior designer
Wally



Construction
Hull - Composite, Deck - Teak



Crew
3



Guests
8



Cabins
3 (3 × twin, 2 × additional berths)



Engines
1 × 380hp Cummins



Generators
1 × Kohler

[View yacht on website](#)

[Watch yacht video](#)



WALLY LOVE

WALLY LOVE



Profile



Bow



Lounge area



BURGESS

Discover the difference.
burgessyachts.com

WALLY LOVE

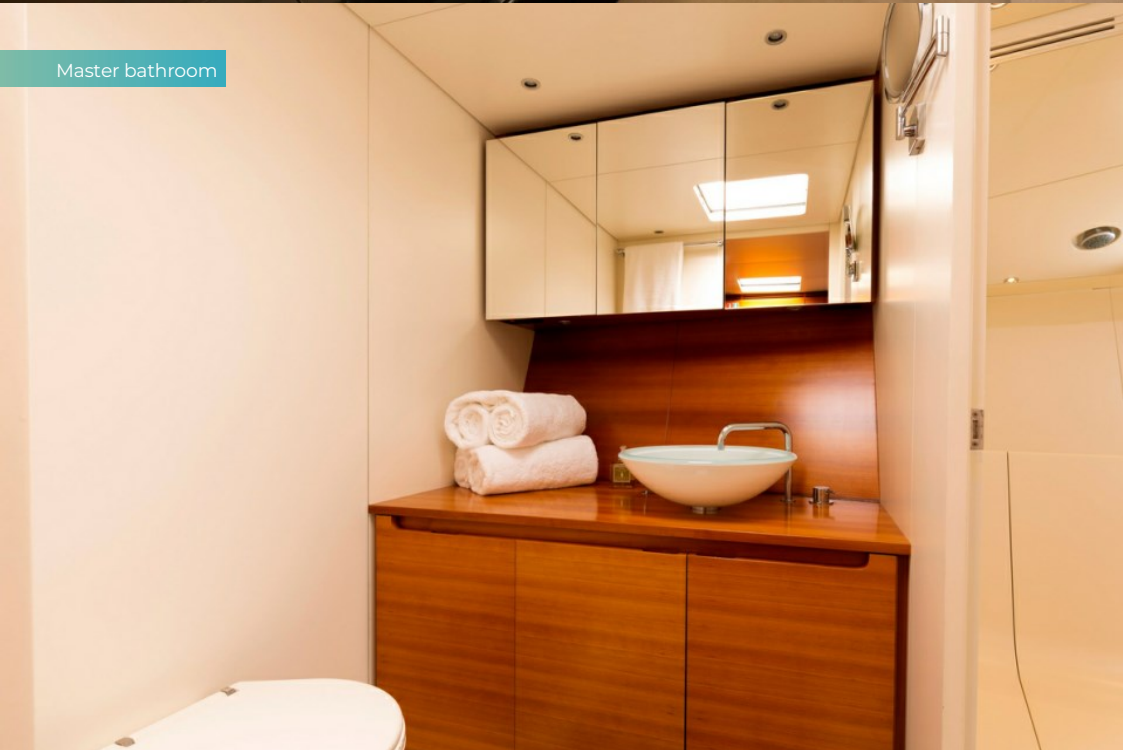
Dining area



Master cabin



Master bathroom



Twin cabin



WALLY LOVE

Twin bathroom



Twin cabin



Twin bathroom



Office



WALLY LOVE

Galley



Details



Details



Lounge and dining area



WALLY LOVE

Al fresco dining



Aft deck



Swim platform



Stern view



WALLY LOVE

Profile



WALLY LOVE

OVERVIEW.

This Bermuda-rigged sailing yacht was constructed in carbon fibre to RINA classification and MCA compliance, fitted out with zero compromise and delivered by Italian sailing superyacht titan Wally Yachts in 2007. She was designed by Germán Frers, the master of combining sparkling performance with sleek looks and fine comfort, and her clean, contemporary interiors are by the yard's in-house team. She has been meticulously maintained and upgraded by her current owner.

A very thorough 2022 refit saw a whole host of mechanical and technical upgrades. These included new seacocks throughout, class requirement works, new running rigging, PBO backstay, Vectran steering cable and new B&G Zeus chartplotters. This follows a complete overhaul of her Cummins engine and Idromar watermaker in 2021. She is in pristine condition, a step-aboard-and-sail-away proposition.

Her extra-tall Southern Spars carbon fibre mast was serviced in 2020, giving a clean bill of health to her carbon fibre ECsix rigging, fitted in 2016. A wardrobe of North Sails 3Di sails was new in 2017. Together these combine to make WALLY LOVE an absolute rocket ship, with speeds of 12-16 knots achieved effortlessly.

Between the companionway and the twin helm stations, the guest cockpit is a family-friendly space, free from lines, in which guests can enjoy the sailing underway sheltered by a sprayhood forward and dine at anchor shaded by a removable awning.

An expansive and versatile foredeck provides a range of options for relaxation and entertainment at anchor, easily reached on wide sidedecks. Sun bathers can choose between the coachroof aft of the helm stations or the lowered terrace on the sea aft, sheltered from the breeze. The transom lowers to create a swim platform with hand shower and there are steps down from the main deck and into the water.

Forward of the terrace on the sea, a bank of glazing sheds light into the saloon, accessed via the aft companionway, exquisite carbon fibre steps. Skylights and hullports deliver more light and seated sightlines for guests dining to port or lounging to starboard.

The companionway forward of the guest cockpit leads to the lower deck guest accommodation. Forward is the owner's suite with two outsized single beds that can convert into one huge king-sized double. Just aft are two twin cabins, each with an additional pullman berth, completing accommodation for eight guests in three cabins, all en suite. She also sleeps four crew.

Underway her Frers heritage is evident in her performance, downwind and up thanks to her 4.9m (16.1ft) T keel. In calms her 325hp engine drives a folding Gori prop to give her a top speed of 12.5kn and a cruising speed of 10.5kn. WALLY LOVE has a Novamarine 460 guest tender with a 40hp outboard and there are three SUPs and two SeaBobs in the toy locker.

Key features

An iconic Wally sailing yacht by German Frers

Large comfortable cockpit and trade mark "sea terrace"

Blistering performance combined with modern comfort

Well maintained with a long standing crew

New Piano Black paint job

Seriously for sale and VAT paid

Tenders

Novamarine 460 with 40hp Yamaha

BURGESS

WORLD CLASS. WORLD WIDE.

| | | | | | | | |
|------------------------------------|-----------------------------------|------------------------------------|---------------------------------|-----------------------------------|---|---|--------------------------------------|
| London +44 20 7766 4300 | Monaco +377 97 97 81 21 | New York +1 212 223 0410 | Miami +1 305 672 0150 | Singapore +65 9665 8990 | Beverly Hills +1 310 424 5112 | Palma +34 971 495 413 | Athens +30 210 967 1661 |
| Dubai +971 4 425 5874 | Phuket +66 7623 9739 | Hong Kong +852 6496 2094 | Tokyo +81 46 738 8612 | Sydney +61 499 945 557 | Mumbai +91 98211 67253 | Rio de Janeiro +55 21 2553-3238 | Shanghai +86 187 0898 6800 |
| Guernsey +44 1481 735360 | | | | | | | |

Advertising of these vessel(s) in printed publications, on the internet or in any other medium is not permitted without prior written permission from Burgess. All particulars are given in good faith and are believed correct but they cannot be guaranteed.

Last updated: 28 abril 2026