

SLIPSTREAM



SLIPSTREAM

OVERVIEW.

Famous for her show-stopping looks, the stunning, multi-award winning SLIPSTREAM is one of the most stylish charter yachts on the water. Plus, she has everything you need, from a cinema to a waterpark, to give you a seven-star charter.

An eye-catching black hull and silver superstructure offers a hint at this superyacht's striking interior. Rich notes of red, black and ochre work in harmony with the luxury yacht's native Australian and Canadian artwork to create spectacular living and entertainment areas. Linking these decks, a hand-carved trio of totem poles stand guard over the glistening black fossil marble stairwell.

Guests can enjoy the full cinema experience at the touch of a button in the sky lounge as black-out blinds fall and a screen unfurls from its hiding place in an elegant chaise longue. An air conditioned gym is available for the restless, with both exercise machines and a selection of free weights. Also on the bridge deck, a circular al fresco dining area is shielded by sliding glass doors, allowing guests to absorb the views on all sides while remaining sheltered from the breeze.

SLIPSTREAM's vast sun deck was designed with every comfort in mind; giant sun pads sit both forward and aft, a glass windbreak fits around the jacuzzi, and an open-air shower and glass-topped bar complete the experience.

With sumptuous accommodation for 12 guests in seven cabins, spread across three decks, guests are spoiled for choice. The rich red and black master suite includes an office, his and her bathrooms, walk-in wardrobe, and a beautiful raised observation lounge that allows direct access to the foredeck. The VIP cabin on the bridge deck has some of the best views on board, with natural light spilling from a sliding glass door leading onto the private balcony. Four stylish double cabins are located on the lower deck, two of which can be converted into twin cabins upon request. The gym also converts to a seventh cabin with two pullman berths and en suite bathroom, if required.

Key features

Master cabin with panoramic observation lounge and direct access to foredeck

VIP cabin with private balcony

Gym can convert to 7th cabin for children or staff

Flexible cabin configuration can provide 6 doubles cabins when required

Outdoor cinema on the sun deck

Extensive selection of watertoys including waterslide

Karaoke machine, smoke and bubble machines

Sun deck jacuzzi

Zero speed stabilisers to reduce any rolling motion while at anchor

SLIPSTREAM

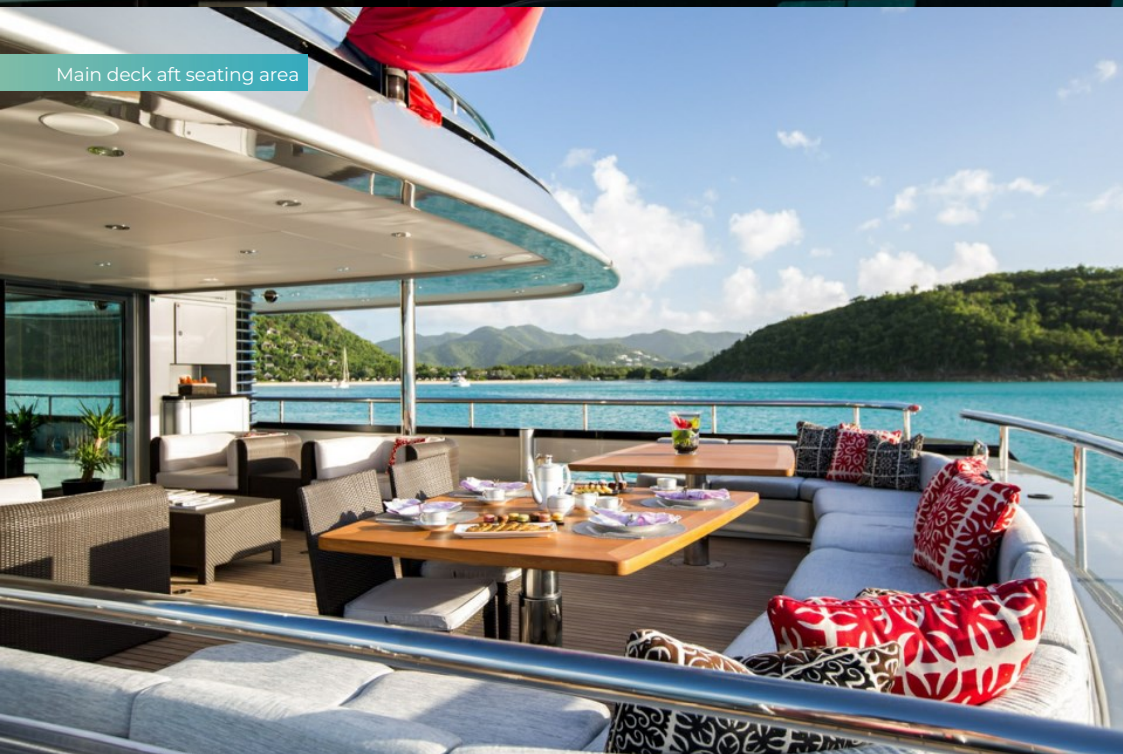
Sun deck jacuzzi



Bridge deck aft seating and sky lounge dining



Main deck aft seating area



Main deck lounge



SLIPSTREAM

Main deck lounge bar



Main deck dining room



Fine dining



Main deck foyer with totem poles



SLIPSTREAM

Master suite



Master suite access to observation lounge



Master suite office



Master suite



SLIPSTREAM

Master bathroom en suite (hers)



Master suite observation lounge



Double cabin



Guest bathroom



SLIPSTREAM

Twin/double cabin



Guest shower room



VIP cabin with private balcony



Sky lounge



SLIPSTREAM

Sky lounge cinema screen



Gym (converts to 7th cabin)



Bridge deck aft



Sun deck jacuzzi



SLIPSTREAM

Sun deck BBQ



Sun deck aft at night



Sun deck dining at night



Fine dining



SLIPSTREAM

Fine dining



Refreshments



Sun deck bar



Watertoys



SLIPSTREAM

Watertoys



Aft decks



Watertoys



Cruising



SLIPSTREAM

Inflatable toys



Evening light



SLIPSTREAM

SPECIFICATION.



Length
60m (196,9ft)



Built
2009, CMN Shipyard France, France



Interior designer
Winch Design



Beam
11,2m (36,7ft)



Draft
3,5m (11,3ft)



Gross tonnage
1.076



Cruising speed
14,5 knots



Maximum speed
15,5 knots



Fuel consumption at cruising speed
320 litres per hour



Engines
2 x 2.201hp Caterpillar



Guests
12



No. of guest cabins
6 (4 x double, 2 x double/twin, 2 x additional berths)



Crew
15

[View yacht on website](#)

[Watch yacht video](#)



TENDERS & TOYS



2 × Tenders



1 × Sailing dinghy



1 × Deck jacuzzi



2 × Waverunners



2 × SeaBobs



4 × Underwater scooters



4 × Foilboards



2 × Kayaks



2 × Stand up paddleboards



Wakeboard



Kneeboard



Wakesurf



Waterskis



Aquapark



Inflatable platform



Waterslide



Inflatable tows



Snorkelling gear



Fishing gear



RYA training centre for jetskis & waverunners



78 × eBikes



44 × eScooters

7.2m Ribeye jet tender with 250hp engine, 7m Novurania tender with 220hp inboard engine, 2 x Sea-Doo RXP-X waverunners each with 300hp engine (2 man), 2 x wake surf boards, 2 x F5S SeaBobs, 2 x kayaks (1 man), 1 x Laser sailing dinghy, 2 x stand up paddle boards, waterskis, wakeboards, kneeboard & tows, snorkelling gear, fishing gear, custom waterslide

SLIPSTREAM

FITNESS & WELLNESS



Cross trainer



Free weights



Jump ropes



Pedal bike



Training bench



Treadmill



Upright stationary bike



Yoga mats

Technogym treadmill, Peloton bike, step machine, yoga mats, Pilates ring, kettle bells, free weights (full set in stainless steel) and bench, medicine balls, push up bars, power grip hand exerciser, skipping ropes

SLIPSTREAM

COMMUNICATION & ENTERTAINMENT



Wi-Fi internet access



Satellite television



Speaker systems



Disco set-up



Karaoke



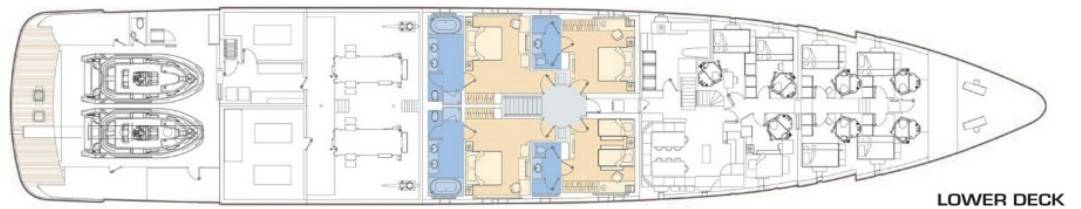
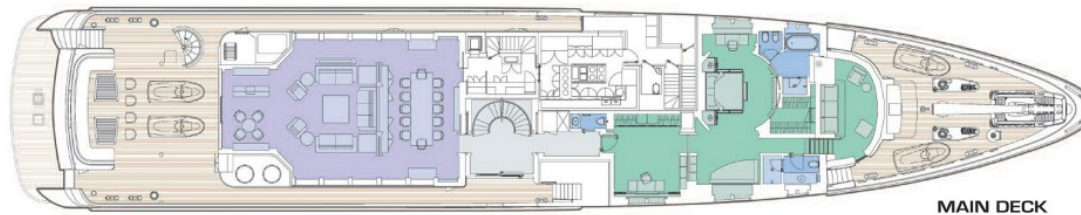
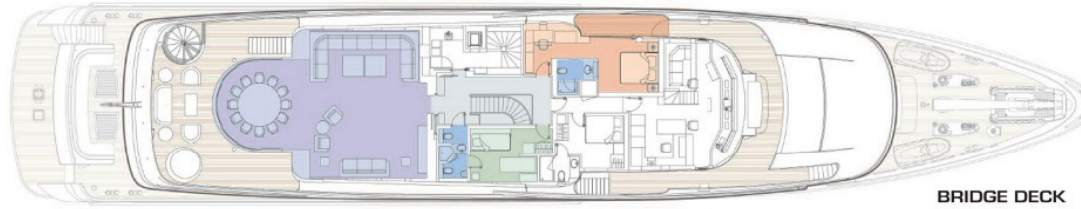
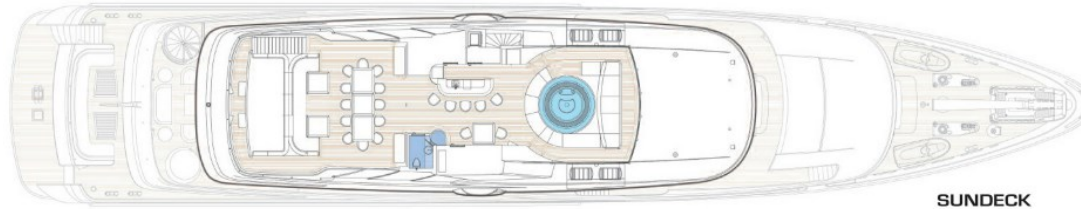
Piano

State-of-the-art audio-visual systems, satellite television, Nintendo Wii, Sony X-Box, sky lounge projector and cinema screen, Satcom & cellular communications facilities, Fleet 77, Wi-Fi internet access

Deck Plans

KEY

- Living areas
- Owner's Suite
- VIP Cabin & Balcony
- Guest Accommodation
- Gym/Pullman en-suite
- Jacuzzi Pool
- Bathrooms



BURGESS

WORLD CLASS. WORLD WIDE.

London +44 20 7766 4300	Monaco +377 97 97 81 21	New York +1 212 223 0410	Miami +1 305 672 0150	Singapore +65 9665 8990	Beverly Hills +1 310 424 5112	Palma +34 971 495 413	Athens +30 210 967 1661
Dubai +971 4 425 5874	Phuket +66 7623 9739	Hong Kong +852 6496 2094	Tokyo +81 46 738 8612	Sydney +61 499 945 557	Mumbai +91 98211 67253	Rio de Janeiro +55 21 2553-3238	Shanghai +86 187 0898 6800
Guernsey +44 1481 735360							

Advertising of these vessel(s) in printed publications, on the internet or in any other medium is not permitted without prior written permission from Burgess. All particulars are given in good faith and are believed correct but they cannot be guaranteed.

Last updated: 28 abril 2026