

SERENITY II



SERENITY II

SPECIFICATION.



Asking price
EUR 7.950.000



Built
2010 (refitted 2021), Mengi-Yay, Turkey



Length
40,1m (131,5ft)



Beam
7,9m (25,9ft)



Draft
2,5m (8,2ft)



Gross tonnage
394



Cruising speed
11 knots



Maximum speed
13 knots



Flag
Malta



Lying
East Mediterranean



Class
RINA Services S.p.A. (RINA) RINA



Exterior designer
Endaze Muhendislik



Interior designer
H2 Yacht Design



Construction
Hull - Steel, Superstructure - Aluminium, Deck - Teak



Crew
7



Guests
13



Cabins
6 (6 × double, 1 × additional berth)



Engines
2 × 1.240hp Caterpillar



Generators
2



Propulsion
Twin screw diesel yacht

[View yacht on website](#)



SERENITY II

Main deck lounge



Main deck lounge



Main deck lounge bar



Main deck dining area



SERENITY II

Master cabin



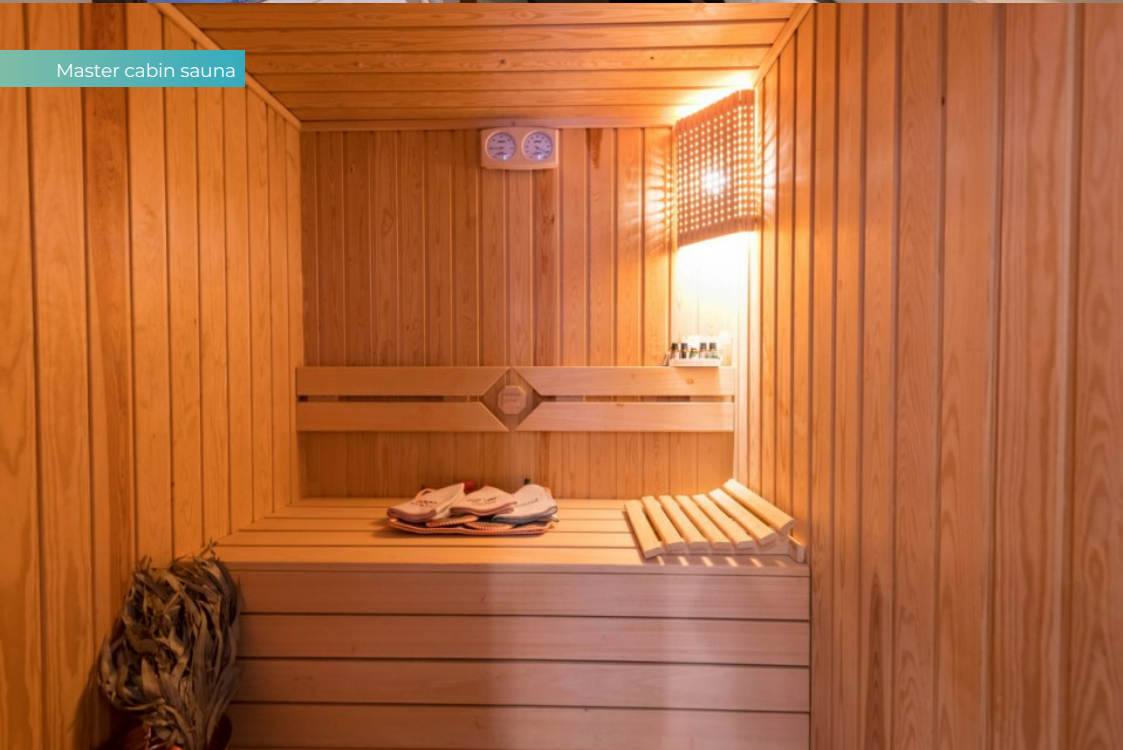
Master en suite bathroom



Master en suite bathroom



Master cabin sauna

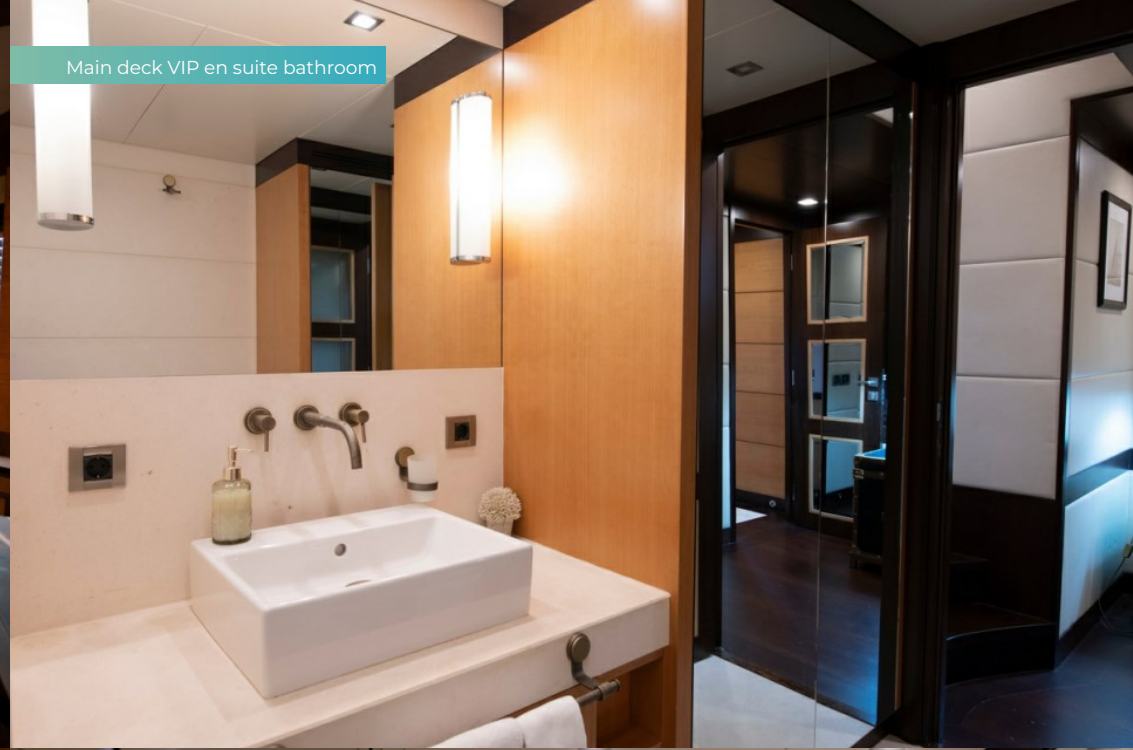


SERENITY II

Main deck VIP cabin



Main deck VIP en suite bathroom



Lower deck VIP cabin



Lower deck VIP en suite bathroom



SERENITY II

Lower deck VIP cabin



Lower deck VIP cabin en suite bathroom



Lower deck double cabin



Bridge



SERENITY II

Engine room



Galley



Crew mess



Main deck aft



SERENITY II

Bridge deck aft



Sun deck



Sun deck bar



Sun deck jacuzzi



SERENITY II

At anchor



At anchor



At anchor



Cruising



SERENITY II

OVERVIEW.

Custom built by Mengi-Yay Yachts in Turkey in 2010, SERENITY II is a 40m (131.2ft) luxury yacht. With her steel hull and aluminium superstructure, her top speed is 13 knots, and she cruises at 11 knots. Her engineering and external design comes from the draft board of Endaze Muhendislik, and her interior was conceived by H2 Yacht Design.

Known for her elegant lines, SERENITY II features walkaround teak decks and uses her internal space to capacity. Forward on the main deck, the unusual 180-degree windows create amazing views in the VIP guest suite, which also has private use of the foredeck.

The upper deck is mainly given over to the owner's suite: an aft facing cabin with floor to ceiling sliding glass doors opening onto the aft deck for their private dining and relaxation. The décor is cool and luxurious in silver-grey and cream, upholstered walls and Macassar cabinetry.

Forward on the upper deck is the well-equipped bridge where full beam windows line the cabin creating an uninterrupted view for the helm.

Another full beam VIP guest suite is situated on the lower deck, this has a bed positioned at an angle to help prevent discomfort. The yacht also has zero speed stabilisers to smooth her motion when underway and at anchor. There are three further double cabins on the lower deck. SERENITY II accommodates up to 13 guests in six cabins.

For living space, the main deck offers a saloon with an open plan lounge-dining room and a bar, which leads a partially covered aft deck with an outdoor table and banquette seating. On the extensive sun deck, guests can dine outside at another large table, sheltered by the hardtop, or sunbathe on the sunpads surrounding the jacuzzi forward. Plus there a sit-up bar.

The tender is a 5.8m Golden Line G580 with 150hp Mercury, which is stored on the upper aft deck, with a crane to launch. A 4.2m Golden Line with 90hp Mercury is stored on the lower deck, accessed through the transom. Also a range of water toys: jetskis, wakeboards, waterskis, scuba gear and towables.

SERENITY II needs nine crew to operate to her full potential. The captain has a double cabin by the bridge, the rest of the crew quarters are on the lower deck, including a dedicated mess room.

Turn-key and ready for new ownership, SERENITY II has been well maintained and consistently upgraded over the years. In 2022 she completed an extensive flag and classification survey, and then received a full hull repaint in 2021.

Key features

Warm and contemporary interior design by H2 Yacht Design

Aft facing master cabin, with private terrace

Forward facing VIP cabin, with 180-degree views

Large sun deck with jacuzzi, sun lounging, and al fresco dining

Transom tender garage for water toys

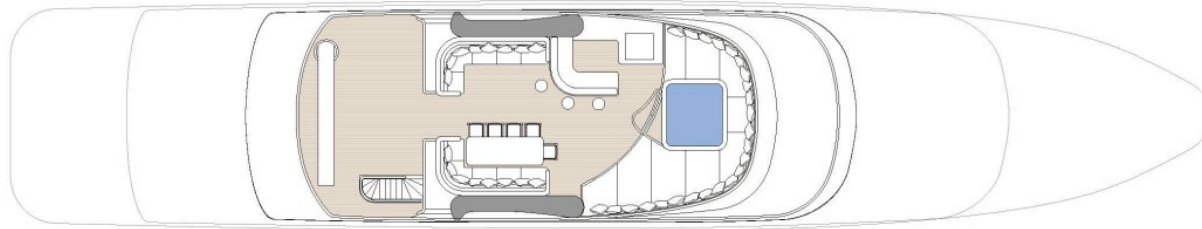
RINA class and MCA compliant

Tenders

1 x 5.8m Golden Line G580 12-person, 2018, 150hp Mercury, 1 x 4.2m Golden Line 6-person, 2018, 90hp Mercury

SERENITY II

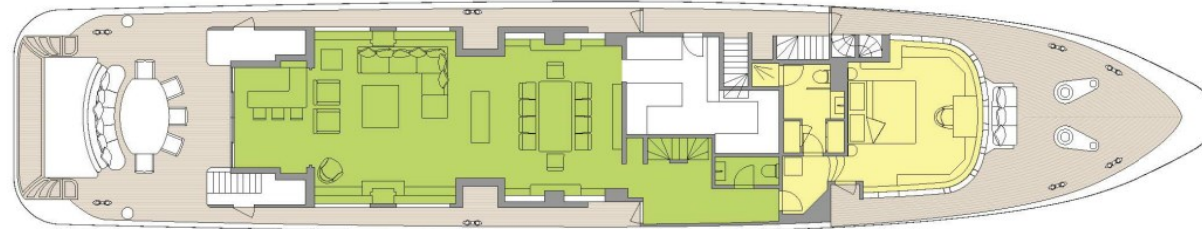
Deck plans



SUN DECK



UPPER DECK



MAIN DECK



LOWER DECK

■ GUEST AREAS ■ MASTER SUITE ■ VIP SUITE ■ GUEST CABINS ■ HAMMAM ■ JACUZZI

BURGESS

WORLD CLASS. WORLD WIDE.

London +44 20 7766 4300	Monaco +377 97 97 81 21	New York +1 212 223 0410	Miami +1 305 672 0150	Singapore +65 9665 8990	Beverly Hills +1 310 424 5112	Palma +34 971 495 413	Athens +30 210 967 1661
Dubai +971 4 425 5874	Phuket +66 7623 9739	Hong Kong +852 6496 2094	Tokyo +81 46 738 8612	Sydney +61 499 945 557	Mumbai +91 98211 67253	Rio de Janeiro +55 21 2553-3238	Shanghai +86 187 0898 6800
Guernsey +44 1481 735360							

Advertising of these vessel(s) in printed publications, on the internet or in any other medium is not permitted without prior written permission from Burgess. All particulars are given in good faith and are believed correct but they cannot be guaranteed.

Last updated: 28 abril 2026