

# ROYALE X

---



ROYALE X

# SPECIFICATION.



Asking price  
**EUR 14.500.000**



Built  
**2012 (refitted 2019), Overmarine, Italy**



Length  
**49,9m (163,7ft)**



Beam  
**9,2m (30,2ft)**



Draft  
**1,6m (5,3ft)**



Gross tonnage  
**488**



Cruising speed  
**27 knots**



Maximum speed  
**38 knots**



Flag  
**Australia**



Lying  
**West Mediterranean**



Class  
**American Bureau of Shipping (ABS) American Bureau of Shipping (ABS)**



Exterior designer  
**Stefano Righini**



Interior designer  
**Valentina Balducci**



Construction  
**Hull - Composite Fibreglass, Superstructure - Composite, Deck - Teak**



Crew  
**9**



Guests  
**9**



Cabins  
**4 (3 × double, 1 × twin, 1 × additional berth)**



Engines  
**3 × 4.610hp MTU**



Generators  
**2 × Kohler**



Propulsion  
**Triple waterjet diesel yacht**

[View yacht on website](#)



# ROYALE X

Berthed in Portofino



Main deck lounge



Main deck lounge



Details



# ROYALE X

Main deck lounge



Main deck lounge dining



Main deck lounge dining



Lower deck foyer



ROYALE X

Master suite



Master suite



Master suite



Master suite



ROYALE X

Master suite shower room en suite



Double guest cabin



Double guest cabin



Twin guest cabin



# ROYALE X

Guest cabin shower room en suite



Media room/family cabin convertible



Media room/family cabin convertible



Gym



ROYALE X

Main deck aft dining



Main deck aft bar



Main deck aft seating



Foredeck seating



ROYALE X

Upper deck dining



Upper deck lounging



At anchor



Cruising



ROYALE X

Aerial



BURGESS

Discover the difference.  
[burgessyachts.com](http://burgessyachts.com)

ROYALE X

# OVERVIEW.

**The 49.9m (163.7ft) ROYALE X, hull No.7 of the iconic Mangusta 165 series, was built in composite to ABS classification by Italian shipyard Overmarine to designs by Stefano Righini, delivered in 2012 and refitted in 2019. This sleek, powerful yacht blends comfort and performance in equal measure to create a genuinely exhilarating experience.**

Three MTU 4,610hp waterjets give her a comfortable cruising speed of 27 knots and a maximum of 38 knots, and with nine Seakeeper gyrostabilisers she remains stable both at anchor and underway. Her modest draft of 1.6m (5.9ft) allows her to explore the charming bays and ports that are off-limits to many large yachts.

ROYALE X has a bright, modern interior by Valentina Balducci with beautiful bleached-teak wood floors and limed-oak panelling throughout.

She accommodates up to nine guests in four adaptable en suite cabins, including a full-beam owner's suite with a private owner's office.

The main deck aft offers built-in upholstered seating and a large dining table.

More sunbathing in privacy is available on the foredeck, with comfortable built-in sun pads.

The sun deck presents an additional open-air dining option as well as spacious lounging areas. The flybridge guarantees an interactive experience while taking advantage of the exciting speed and views.

ROYALE X's distinguished style, space and speed provides any owner with the ultimate yachting experience among the islands of the Balearics and Croatia, or port hopping along the exclusive French and Italian Rivas.

## Key features

---

**Fantastic condition and ready for immediate use**

---

**Expansive outdoor deck spaces**

---

**Full-beam master cabin with private office**

---

**Gym and media room**

---

**Top speed of 38kn**

---

**Low engine and generator hours**

---

**Nine Seakeeper stabilisers installed**

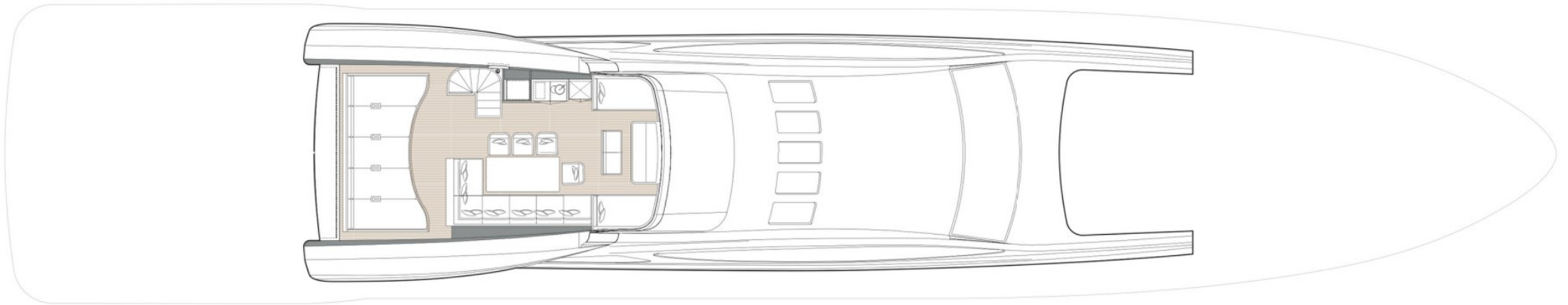
---

## Tenders

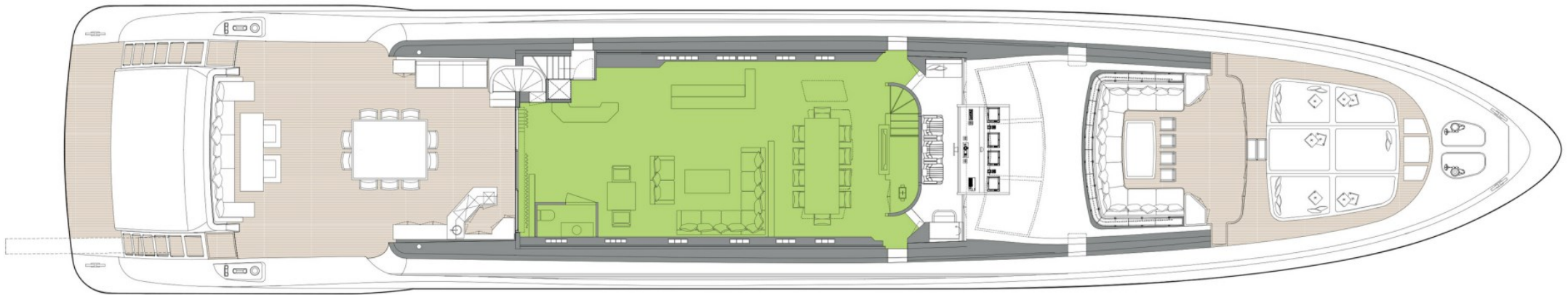
---

21ft Castoldi diesel jet tender

# UPPER DECK

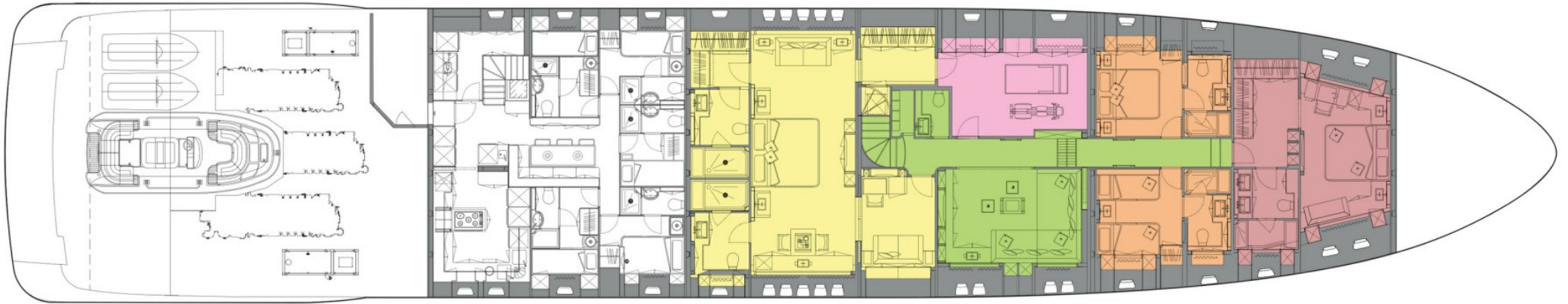


# MAIN DECK



- GUEST AREAS
- MASTER SUITE
- VIP SUITE
- GUEST CABINS
- GYM

# LOWER DECK



- GUEST AREAS
- MASTER SUITE
- VIP SUITE
- GUEST CABINS
- GYM

# BURGESS

# WORLD CLASS. WORLD WIDE.

<b>London</b> +44 20 7766 4300	<b>Monaco</b> +377 97 97 81 21	<b>New York</b> +1 212 223 0410	<b>Miami</b> +1 305 672 0150	<b>Singapore</b> +65 9665 8990	<b>Beverly Hills</b> +1 310 424 5112	<b>Palma</b> +34 971 495 413	<b>Athens</b> +30 210 967 1661
<b>Dubai</b> +971 4 425 5874	<b>Phuket</b> +66 7623 9739	<b>Hong Kong</b> +852 6496 2094	<b>Tokyo</b> +81 46 738 8612	<b>Sydney</b> +61 499 945 557	<b>Mumbai</b> +91 98211 67253	<b>Rio de Janeiro</b> +55 21 2553-3238	<b>Shanghai</b> +86 187 0898 6800
<b>Guernsey</b> +44 1481 735360							

Advertising of these vessel(s) in printed publications, on the internet or in any other medium is not permitted without prior written permission from Burgess. All particulars are given in good faith and are believed correct but they cannot be guaranteed.

Last updated: 28 abril 2026