

PROJECT 825



PROJECT 825

SPECIFICATION.



Asking price
Price on application



Built
2025, Feadship, Royal Van Lent, The Netherlands



Length
75,8m (248,6ft)



Beam
12m (39,4ft)



Draft
3,9m (12,8ft)



Gross tonnage
1.750



Cruising speed
12 knots



Maximum speed
15,4 knots



Flag
Cayman Islands



Lying
Under construction



Class
Lloyd's Register (LR) Lloyd's +100 A1 SSC MONO YACHT G6 + LMC UMS ECO



Exterior designer
De Voogt



Interior designer
Gilles & Boissier



Construction
Hull - Steel, Superstructure - Aluminium



Crew
17



Guests
12



Cabins
6 (5 × double, 1 × twin)



Engines
2 × 2.000hp MTU



Generators
2 × Scania



Propulsion
Twin screw diesel yacht

[View yacht on website](#)

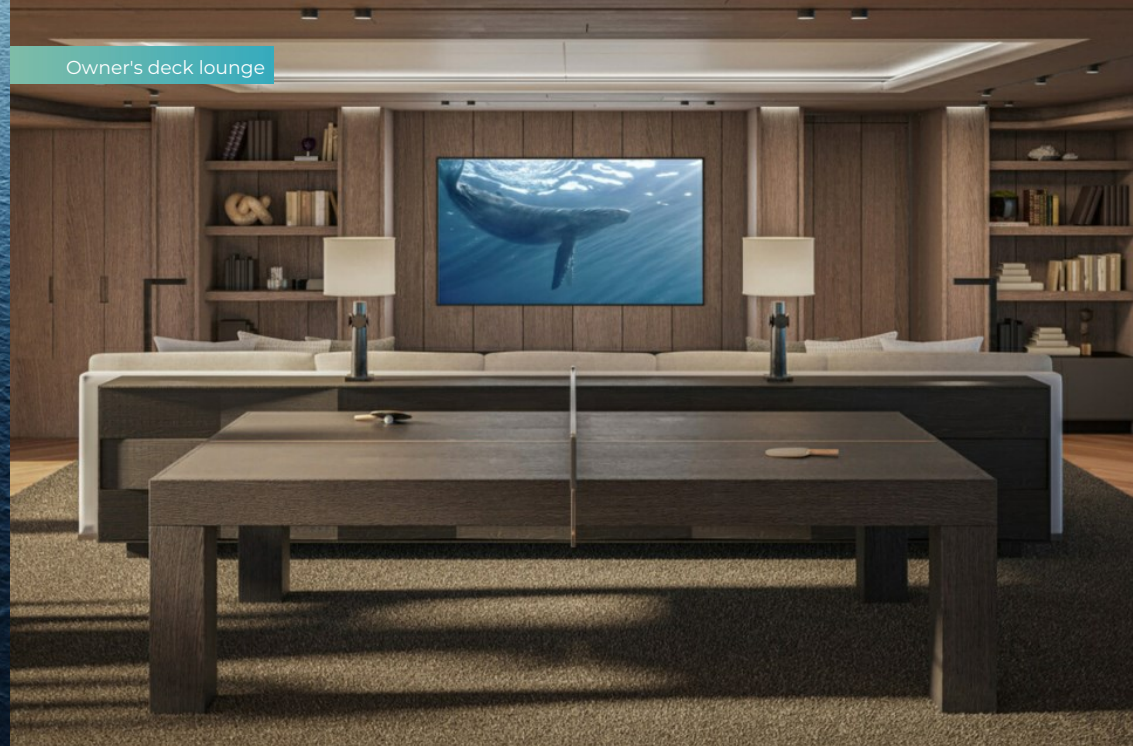
[Watch yacht video](#)



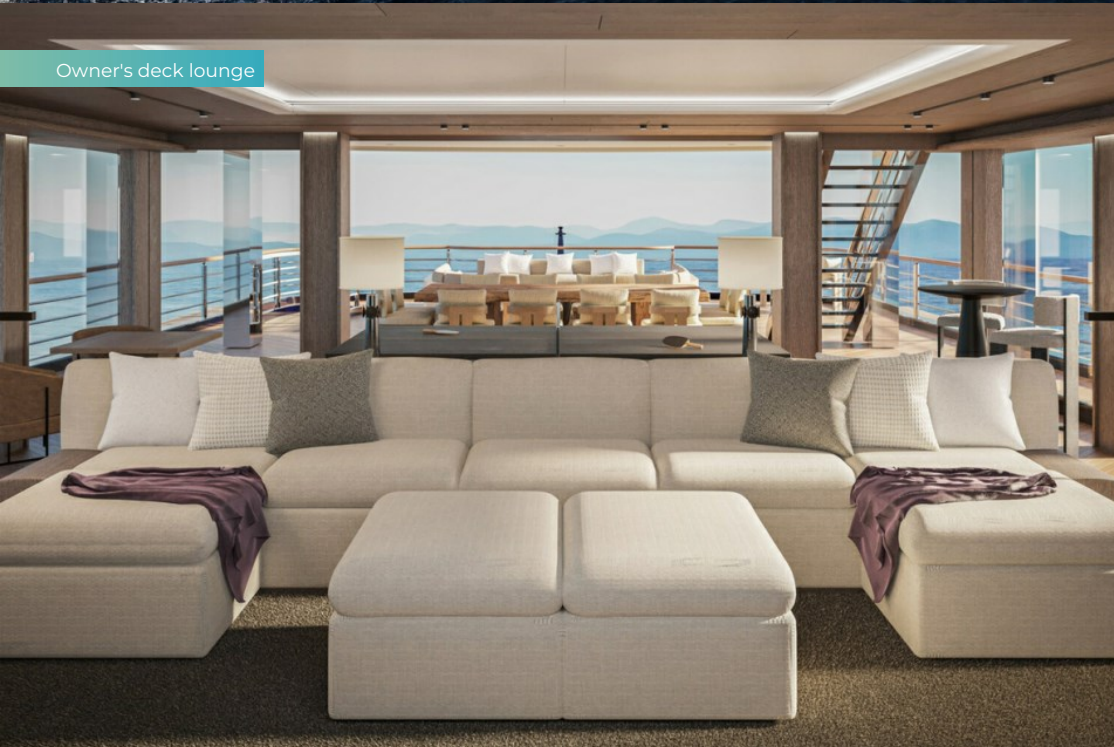
PROJECT 825



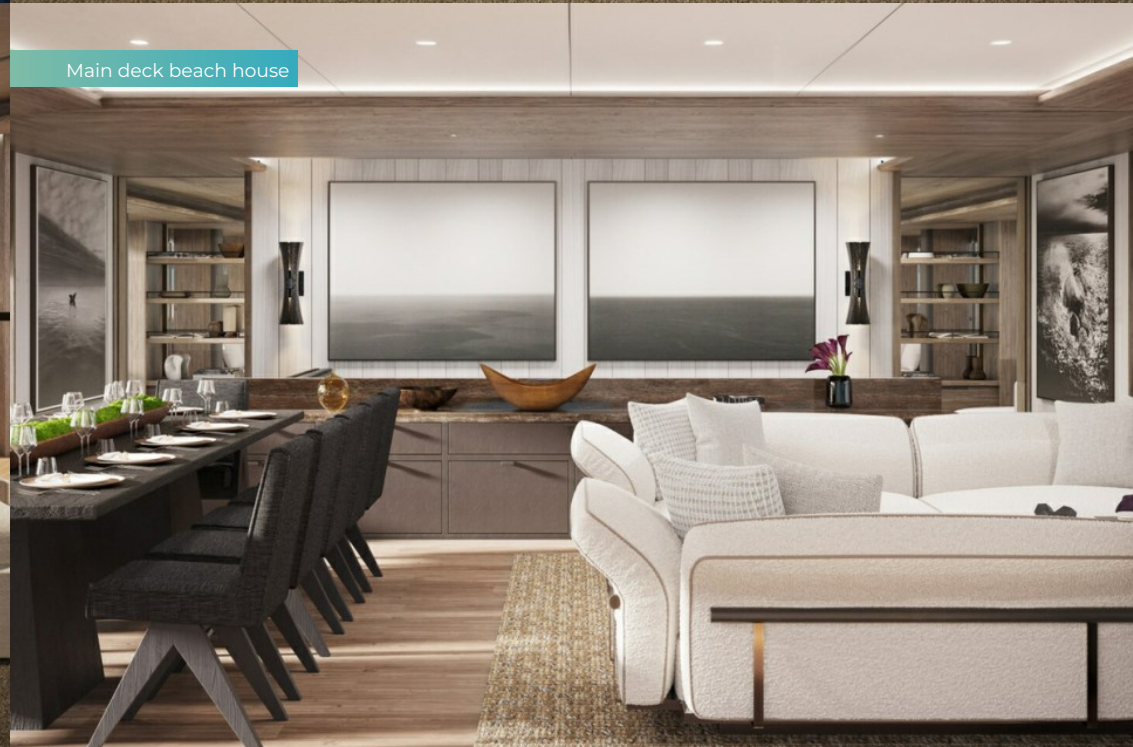
Owner's deck lounge



Owner's deck lounge



Main deck beach house



PROJECT 825

Main deck games room



Owner's deck stateroom



Owner's deck en suite

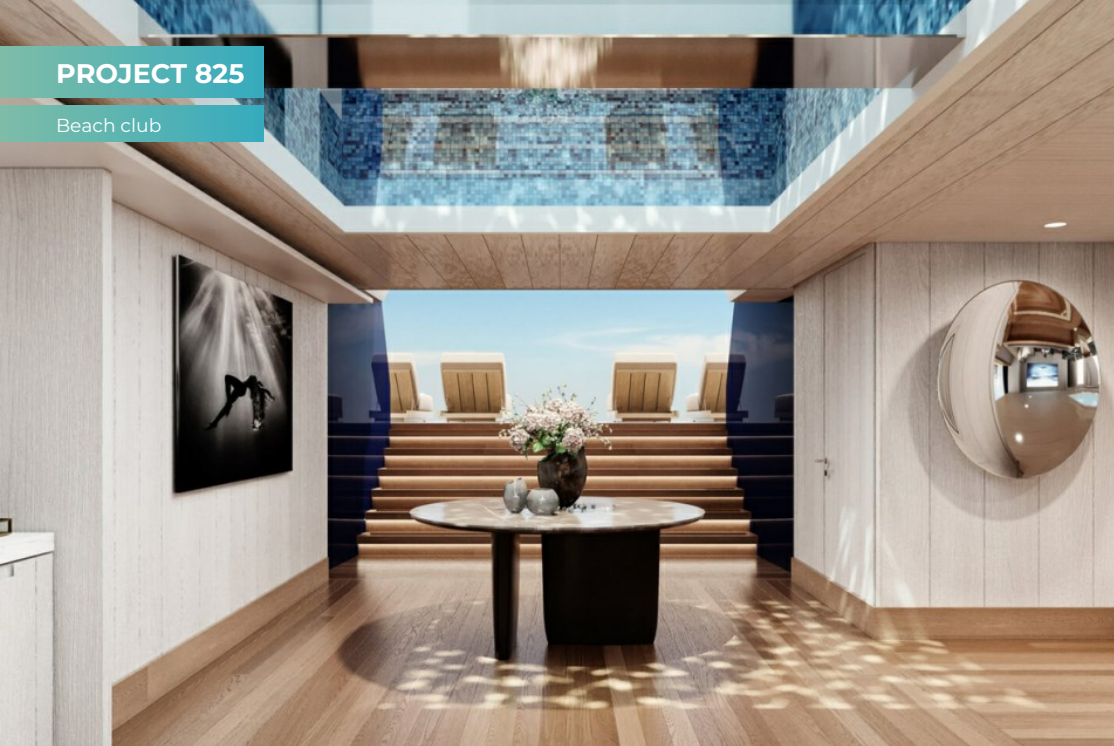


Owner's deck en suite



PROJECT 825

Beach club



Beach club



Gym



PROJECT 825

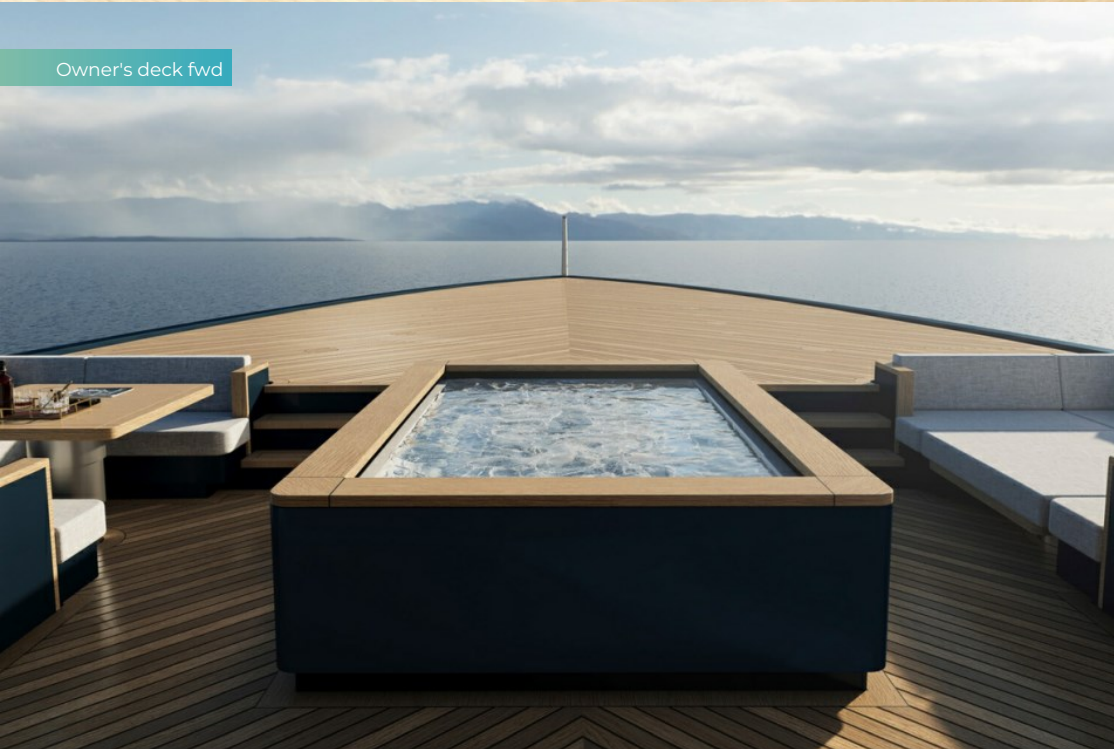
Main deck aft



Owner's deck aft terrace



Owner's deck fwd



Bridge deck aft



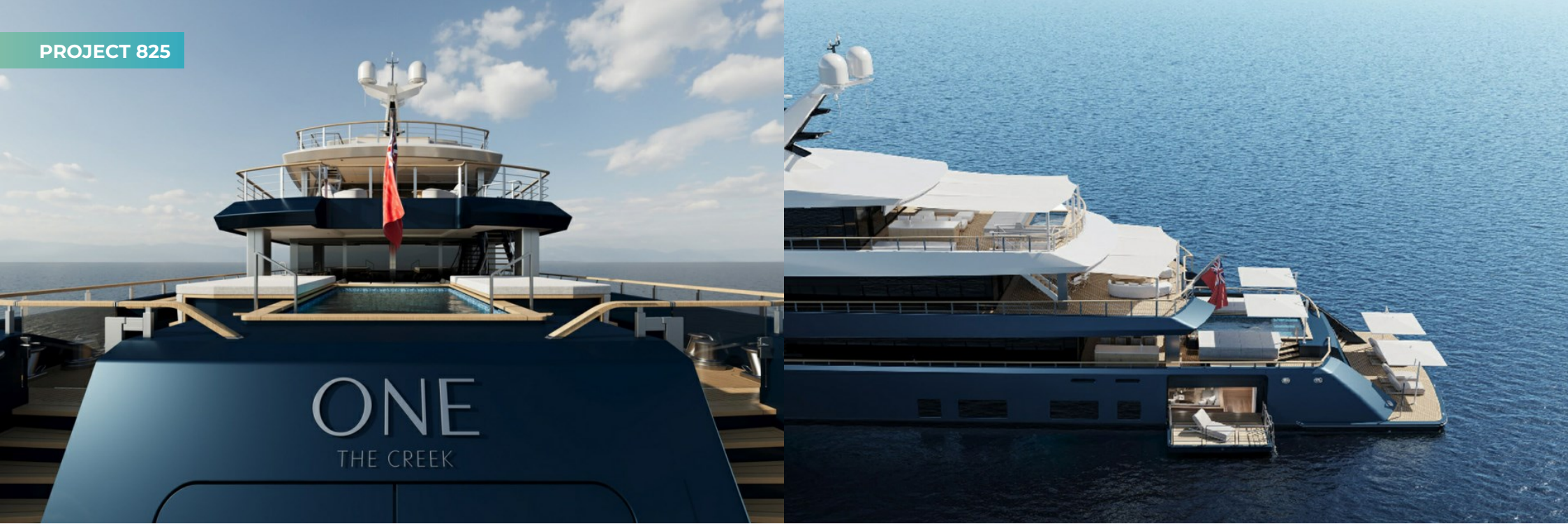
PROJECT 825



BURGESS

Discover the difference.
burgessyachts.com

PROJECT 825



BURGESS

Discover the difference.
burgessyachts.com

OVERVIEW.

Opportunities to buy a large yacht currently in build at northern European shipyards are few and far between. Opportunities to jump the queue with a Feadship new build are almost unheard of. PROJECT 825 is one such rarity.

This 75.8m (248.6ft) motor yacht, currently in build at Feadship, Royal Van Lent, is due for delivery at the beginning of 2025. Parisian studio Gilles & Boissier, designers of New York's Baccarat Hotel, has created a tactile interior design with earth-toned, lime-washed grained wood and finished stone, surfaces brought to life by ever-changing natural light through ubiquitous floor-to-ceiling glazing.

With 1,750GT spread across four decks, she has a host of in-demand features. A very large lower deck beach club opens on two sides and there is step-free access to the lower deck guest accommodation. The beach club enjoys dappled light through the glass-bottomed pool above.

The bridge deck wellness centre has an aft-facing gym that can be climate controlled or opened on three sides. It overlooks a terrace with bar, lounge, daybed and sunbathing around a jacuzzi. Inside, forward of the gym is a sauna, dayhead and an elevator serving three decks from the main deck to the bridge deck.

Below is the owner's deck. The bedroom suite forward overlooks, and has access to, a private terrace with jacuzzi and two seating areas around tables that lower to create sunbeds. Forward of that is the touch-and-go helipad. There is a huge bathroom, walk-in wardrobe and private study.

Moving aft there is an owner's lounge with bulkhead-mounted TV. Sliding glass doors lead to an aft terrace with private dining shaded by the overhang and sun lounge seating. Walkaround sidedecks allow external access to the forward terrace.

The focus of the main deck aft is the pool with sunbeds either side, a bar for refreshments and a drop-down swivel TV for entertainment. Inside is a remarkable beach house with lounge and dining, and sliding glass doors on three sides to bring the outside in. A games room forward provides more entertainment and between the two a staircase leads down to the lower deck guest accommodation: two double cabins, one twin and one convertible cabin.

Forward is a full-beam VIP suite with bathroom, walk-in wardrobe and a lounge with private balcony. There is a dayhead off the lobby and a massage room with a single murphy bed off the corridor leading to the VIP suite. This completes versatile accommodation for 12 guests in six cabins, and she also sleeps up to 17 crew.

Twin 2,000hp MTU diesel engines give her a top speed of 15.6 knots, a cruising speed of 12 knots and a transatlantic range of 5,000nm. Zero speed stabilisers ensure comfort on arrival. A 9.8m (32.2ft) tender stows along with toys and the rescue tender behind shell doors forward on the main deck.

Elements of the design remain a work in progress and may differ from renderings provided.

Key features

Under construction at Feadship, Royal Van Lent & due for delivery in Q1 2025

Fantastic guest accommodation including large owner's suite, full beam VIP cabin and guest accommodation with step-free access to beach club

Large beach club opening on two sides

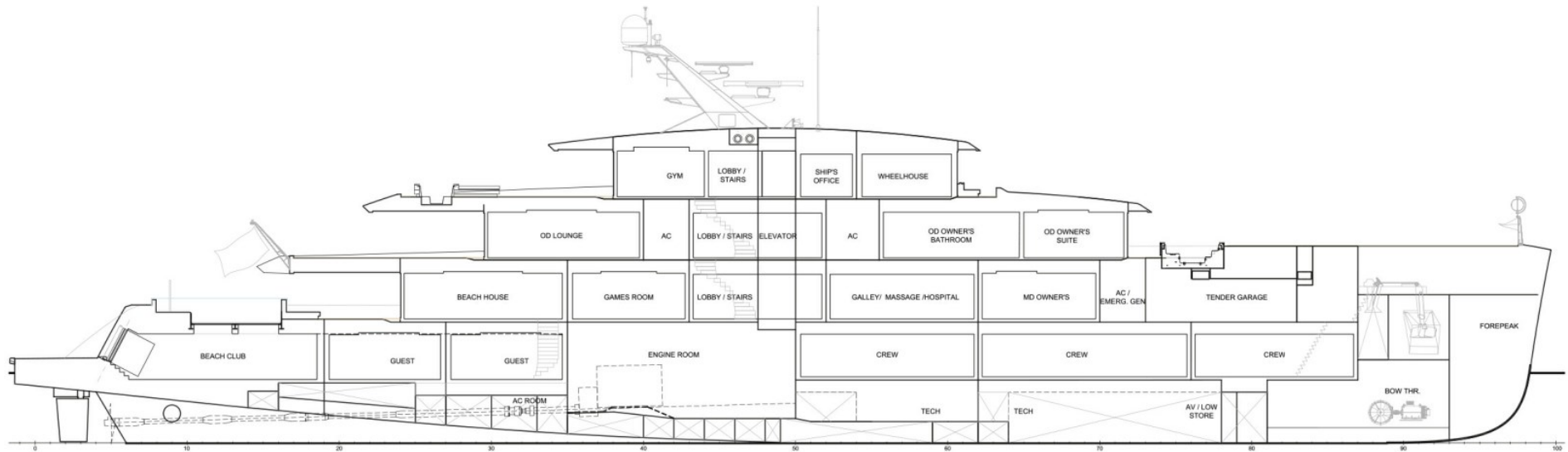
Glass bottomed pool on main deck aft

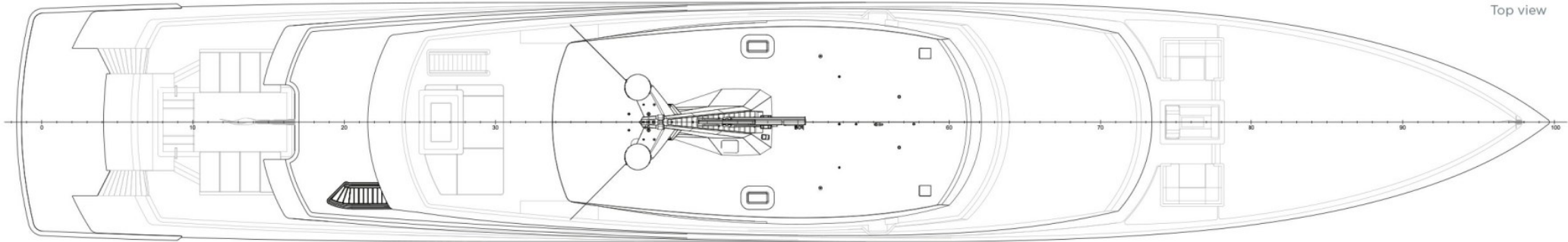
Great wellness facilities including inside-outside gym, sauna & massage room

Elevator

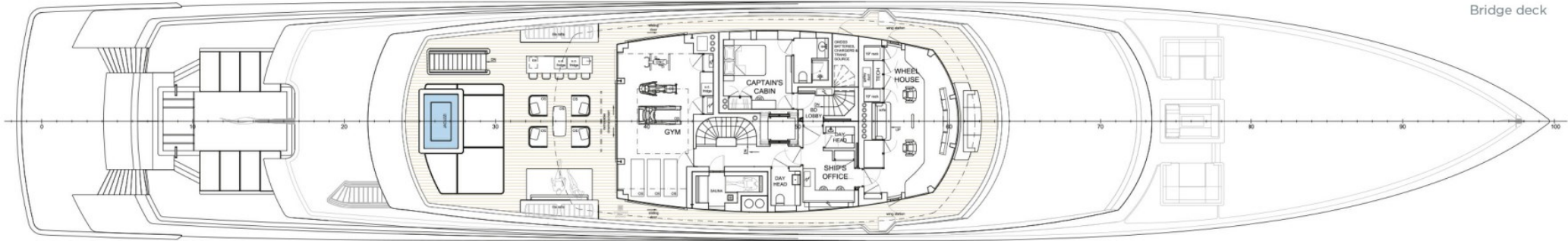
Tenders

Space for a 9.8m tender, rescue tender and toys to be stored forward on main deck forward

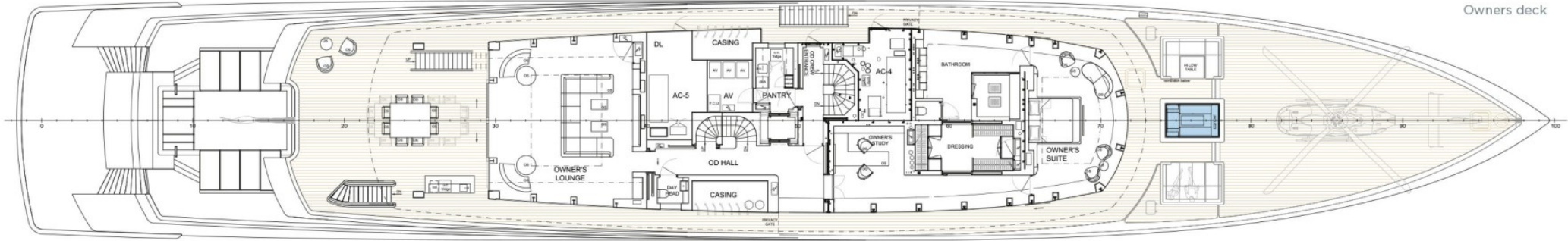




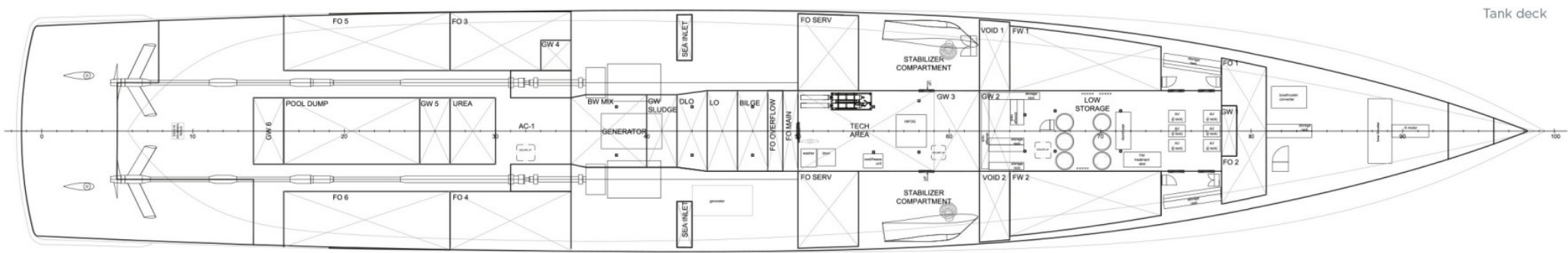
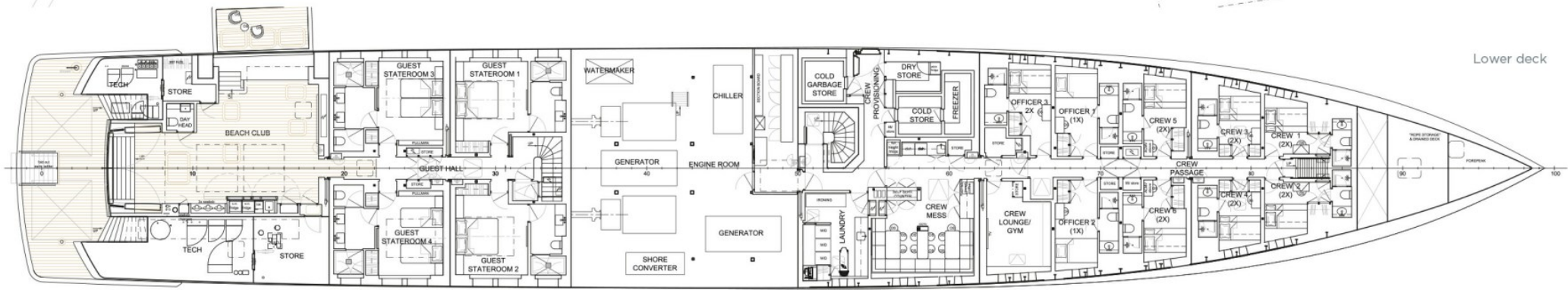
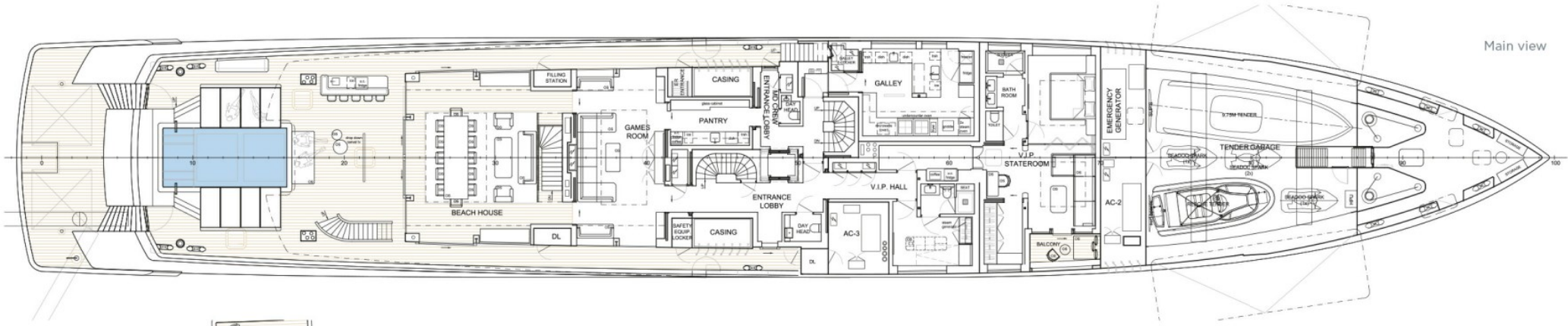
Top view



Bridge deck



Owners deck



BURGESS

WORLD CLASS. WORLD WIDE.

London +44 20 7766 4300	Monaco +377 97 97 81 21	New York +1 212 223 0410	Miami +1 305 672 0150	Singapore +65 9665 8990	Beverly Hills +1 310 424 5112	Palma +34 971 495 413	Athens +30 210 967 1661
Dubai +971 4 425 5874	Phuket +66 7623 9739	Hong Kong +852 6496 2094	Tokyo +81 46 738 8612	Sydney +61 499 945 557	Mumbai +91 98211 67253	Rio de Janeiro +55 21 2553-3238	Shanghai +86 187 0898 6800
Guernsey +44 1481 735360							

Advertising of these vessel(s) in printed publications, on the internet or in any other medium is not permitted without prior written permission from Burgess. All particulars are given in good faith and are believed correct but they cannot be guaranteed.

Last updated: 28 abril 2026