

PRINCESS L



PRINCESS L

SPECIFICATION.



Asking price
EUR 2.800.000 (EU VAT paid)



Built
2006 (refitted 2018), Fipa Italiana Yachts, Italy



Length
32,1m (105,3ft)



Beam
6,7m (22ft)



Draft
2,2m (7,2ft)



Gross tonnage
149



Cruising speed
20 knots



Maximum speed
26 knots



Flag
Greece



Lying
East Mediterranean



Class
INSB



Exterior designer
Maiora



Interior designer
Roberto del Re



Construction
Hull - GRP, Superstructure - GRP, Deck - Teak



Crew
5



Guests
12



Cabins
5 (3 × double, 2 × double/twin, 2 × additional berths)



Engines
2 × 2.400hp MTU



Generators
2 × Kohler



Propulsion
Twin screw diesel yacht

[View yacht on website](#)



PRINCESS L



BURGESS

Discover the difference.
burgessyachts.com

PRINCESS L



BURGESS

Discover the difference.
burgessyachts.com

PRINCESS L



BURGESS

Discover the difference.
burgessyachts.com

PRINCESS L



BURGESS

Discover the difference.
burgessyachts.com

PRINCESS L



BURGESS

Discover the difference.
burgessyachts.com

PRINCESS L

OVERVIEW.

PRINCESS L is a 32.1m (105.3ft) performance motor yacht built in composite to INSB classification and delivered by Fipa Italiana Yachts in 2006. Exterior design is by Maiora and her interiors are the work of Roberto del Re. Extensively refitted in 2018, she presents very well.

An expansive flybridge has a helm station forward to port and access to the bridge to starboard. Beneath the hardtop there is a lounge with banquette seating either side of a table and aft is a full beam sunpad.

There is open-air dining on the main deck aft and steps leading down to the swim platform and tender and toy garage. Sidedecks lead forward to a large foredeck sunpad.

The main saloon has sofa seating either side with diagonal hardwood flooring and cream leather headlining.

To port there is dining for eight guests and to starboard a passageway leads past the galley to the VIP cabin with en suite and shower room.

She welcomes up to 12 guests in five cabins. On the lower deck there is a full-beam owner's suite aft with his-and-hers en suites sharing a spa bath with shower, a second full-beam double cabin forward with en suite shower and two en suite twin cabins in between, both with an additional berth.

Twin 2,400hp MTU diesel engines give her a top speed of 26 knots, she cruises at 20 knots and has a range of 460nm. Her performance, combined with a draft of just 2.2m (7.2ft) make her ideally suited to island hopping.

Key features

Performance yacht with top speeds of 26 knots

Accommodation for up to 12 guests in five cabins

Thorough technical maintenance program from the Owner

Very good charter record

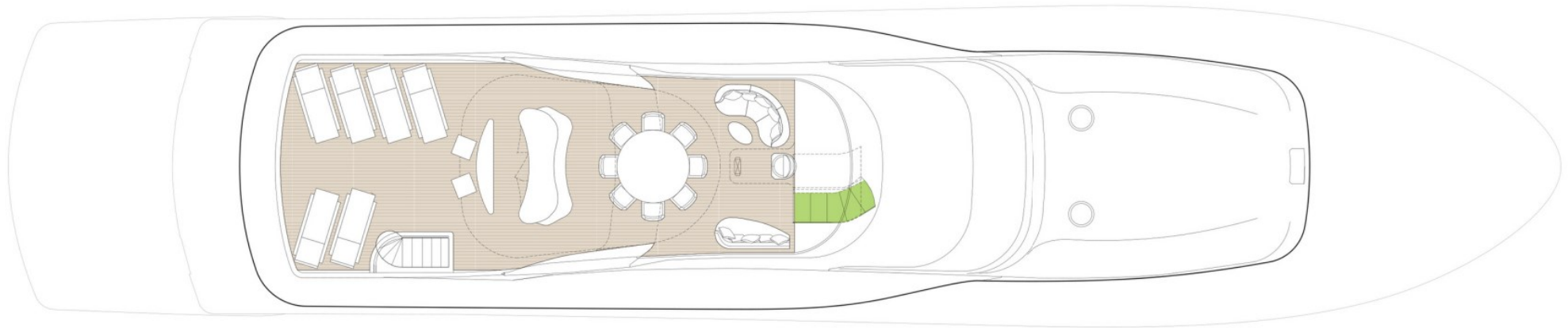
Competitively priced

Home berth in Zea marina (Athens), easy for inspections

Tenders

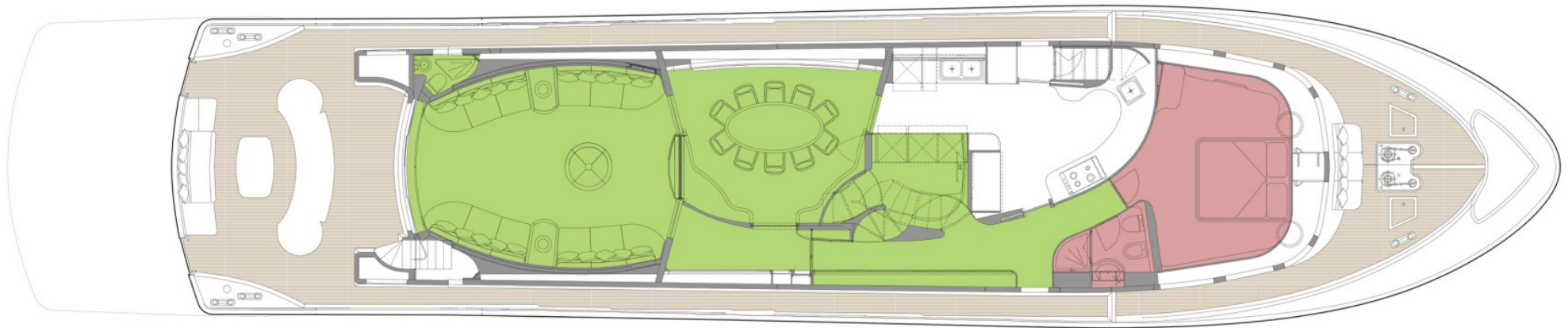
1 x Zar ZF3 70 hp

UPPER DECK



■ GUEST AREAS ■ MASTER SUITE ■ GUEST CABINS ■ VIP SUITE

MAIN DECK



■ GUEST AREAS ■ MASTER SUITE ■ GUEST CABINS ■ VIP SUITE

LOWER DECK



 GUEST AREAS  MASTER SUITE  GUEST CABINS  VIP SUITE

BURGESS

WORLD CLASS. WORLD WIDE.

London +44 20 7766 4300	Monaco +377 97 97 81 21	New York +1 212 223 0410	Miami +1 305 672 0150	Singapore +65 9665 8990	Beverly Hills +1 310 424 5112	Palma +34 971 495 413	Athens +30 210 967 1661
Dubai +971 4 425 5874	Phuket +66 7623 9739	Hong Kong +852 6496 2094	Tokyo +81 46 738 8612	Sydney +61 499 945 557	Mumbai +91 98211 67253	Rio de Janeiro +55 21 2553-3238	Shanghai +86 187 0898 6800
Guernsey +44 1481 735360							

Advertising of these vessel(s) in printed publications, on the internet or in any other medium is not permitted without prior written permission from Burgess. All particulars are given in good faith and are believed correct but they cannot be guaranteed.

Last updated: 28 abril 2026