

PELORUS



PELORUS

SPECIFICATION.



Asking price
EUR 185.000.000



Built
2003 (refitted 2017), Lurssen-Werft, Germany



Length
90-100m (270-300ft)



Beam
18,3m (60ft)



Draft
4,7m (15,4ft)



Gross tonnage
5.403



Cruising speed
18 knots



Maximum speed
20 knots



Flag
Cayman Islands



Lying
Europe



Class
DNV-GL Lloyd's Register



Exterior designer
Tim Heywood



Interior designer
Terence Disdale



Construction
Hull - Steel, Superstructure - Steel



Crew
46



Guests
24



Cabins
12 (9 × double, 3 × double/twin)



Engines
2 × 5.300hp Wartsila



Propulsion
Twin screw diesel yacht

Note

Not available for sale to US residents while in US waters.

[View yacht on website](#)

[Watch yacht video](#)



PELORUS



BURGESS

Discover the difference.
burgessyachts.com

PELORUS



BURGESS

Discover the difference.
burgessyachts.com

PELORUS



BURGESS

Discover the difference.
burgessyachts.com

OVERVIEW.

TEST The iconic PELORUS is an apex superyacht of unquestionable pedigree. She is a 115m (377.3ft) motor yacht of 5,403GT, with a steel hull and aluminium superstructure custom-built to DNV-GL classification and delivered by Lurssen in 2003. She was designed by two of the world's most celebrated yacht designers with sweeping exterior styling by Tim Heywood and beachside villa interiors by Terence Disdale. Since her delivery, she has had two significant refits the first at Blohm+Voss in 2008, when her second helipad was added, and the second at Kusch Yachts in 2017 during her 15-year survey.

Exterior features include a sun deck with a large pool with counter-current jets and a jacuzzi, bar and open-air dining. There are no fewer than five balconies and sea terraces across main and lower decks, two of which serve the dining room and main saloon and another spectacularly opens up a lower deck guest cabin. There are helipads on the foredeck and forward on the owner's deck where a companionway leads to a private terrace.

An elevator serves all guest decks from the lower to sun deck for multi-generational access. The upper deck is designed for entertainment. A huge al fresco space aft has open-air dining and lounges beneath the overhang and plenty of versatile deck space aft, as well as walkaround sidedecks for promenading.

Inside is a panoramic sky lounge with a huge bar and generous lounge and huge screen. The space has nightclub lighting and sound systems and rug rolls away to reveal an illuminated dancefloor. Forward is a tiered cinema with world-class audio visual system.

The lower deck aft is devoted to wellness. There is a large, fully equipped gym with its own sea terrace, massage room, treatment room, hair salon, steam room, plunge pool, hydrotherapy spa and relaxation room.

As well as a private terraces forward and aft, the dedicated owner's deck has a bedroom suite with 200-degree views, a huge bathroom and dressing room, as well as a vast lounge and study aft and a butler's cabin. There are VIP and guest suites on the upper deck, two guest suites on the main deck and a further three guest suites complete accommodation for 24 guests in 12 cabins. She also sleeps up to 46 crew including seven engineers to ensure reliability and five personal staff for seven-star service.

Her custom tenders, including 11.2m (36.7ft) limo and 8.5m (27.9ft) sport, both by Vikal, are stowed on the main deck aft and launched on horizontal davits through shell doors. She also has storage for her additional tenders, as well as a huge selection of toys and scuba diving equipment. Twin 5,300hp Wartsila diesel engines give her a top speed of 20 knots, she cruises comfortably at 18 knots and has a transoceanic maximum range of 6,000nm at her passage speed of 16 knots. Two sets of Quantum zero speed stabilisers ensure comfort on arrival.

Key features

Iconic pedigree yacht delivered by Northern-European shipyard Lurssen

Elegant exterior design by Tim Heywood

Beautiful interior design by Terence Disdale

Flexible accommodation for 24 guests, 10 staff and 46 crew members

Fantastic storage capacity for large tenders and toys

Two helipads

Elevator

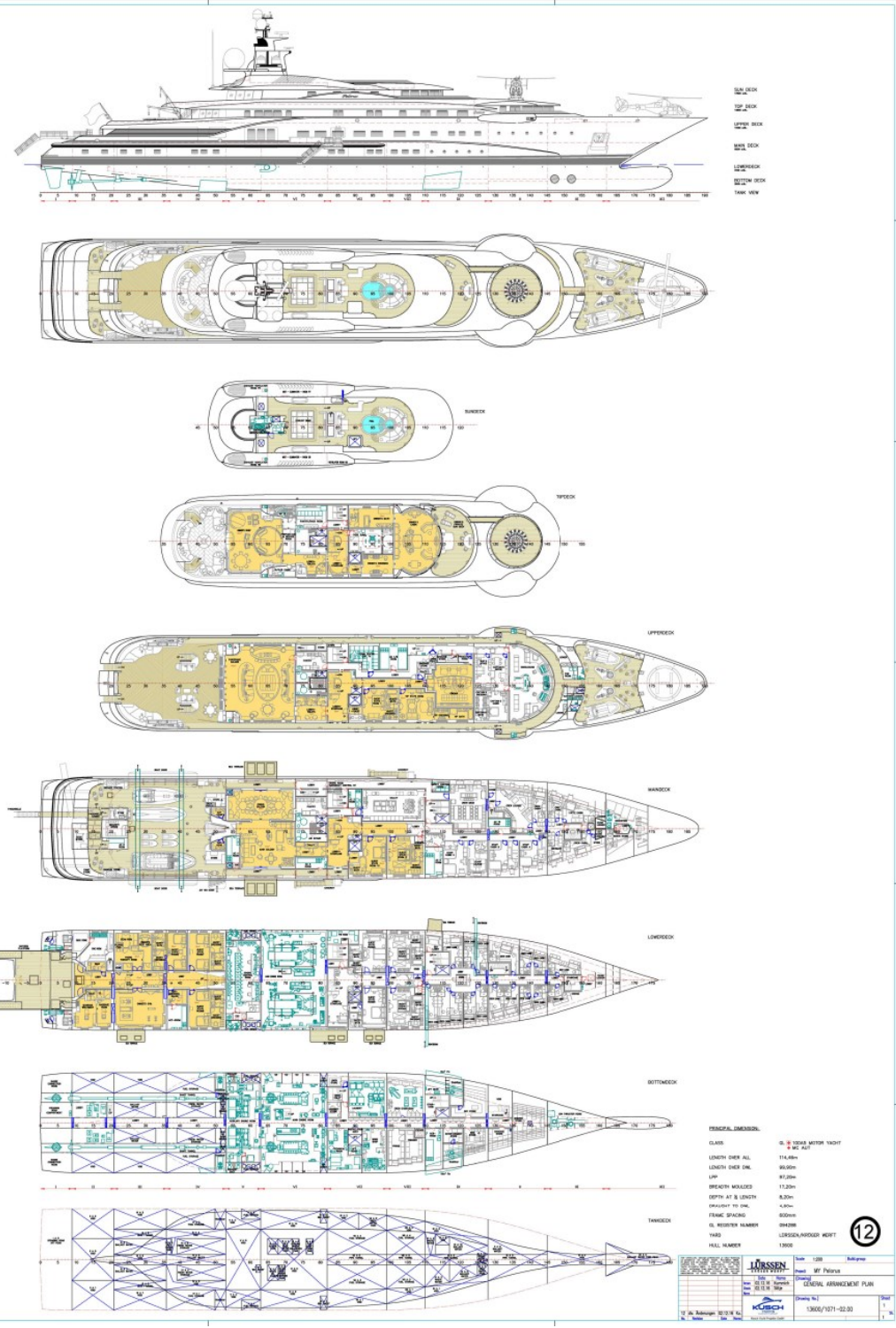
Large swimming pool and jacuzzi on sun deck

Large wellness area with sea terrace, including gym, massage room, spa and plunge pool

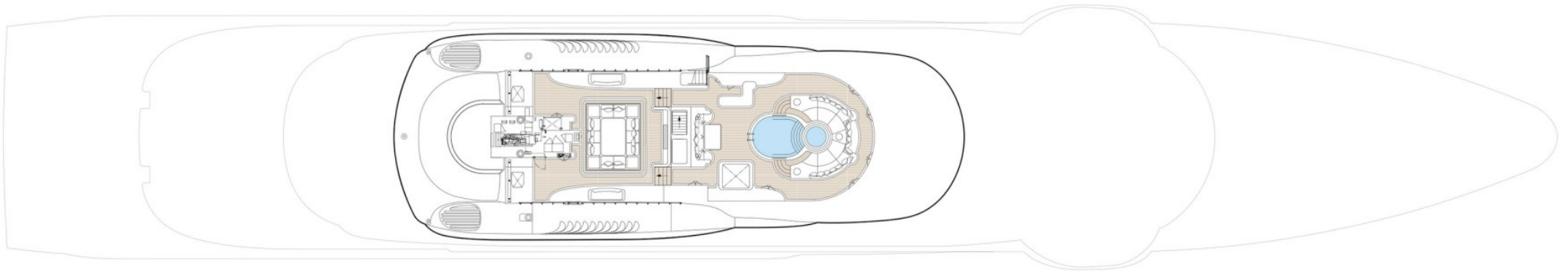
Range of 6,000 nm at cruising speed

Tenders

11.2m Vikal limo tender, 8.5m Vikal sports tender, 10m RIB X-tender, 9m Hinkley, 6.2m Pascoe work boat, 6.5 Pascoe work boat & 3.6m Zodiac RIB

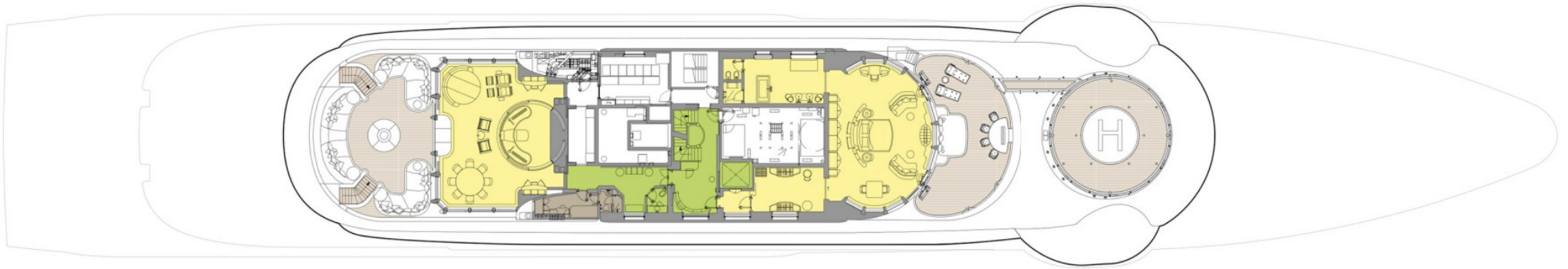


SUN DECK



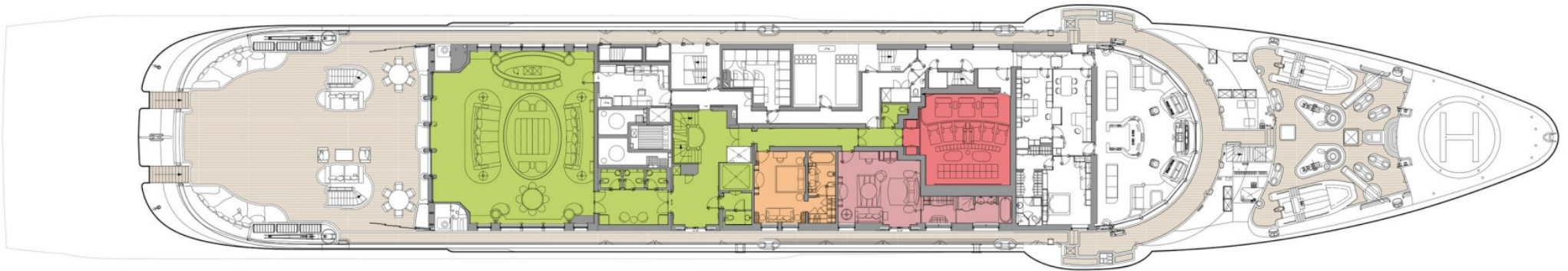
- GUEST AREAS
- MASTER SUITE
- VIP SUITE
- GUEST CABINS
- CINEMA
- GYM
- MASSAGE SUITE
- BEAUTY SALON
- SPA
- HAMMAM
- POOL
- STAFF CABINS
- BUTLER'S CABIN

TOP DECK



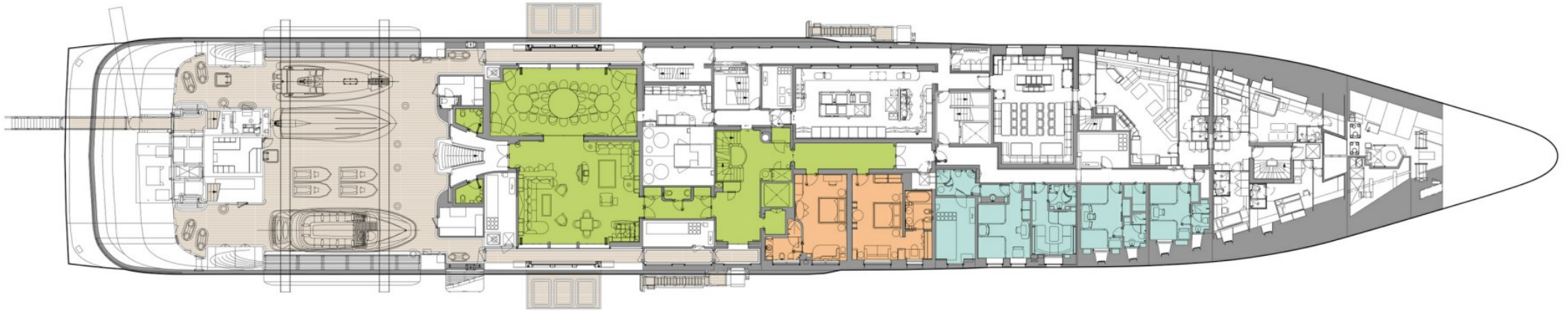
- GUEST AREAS
- MASTER SUITE
- VIP SUITE
- GUEST CABINS
- CINEMA
- GYM
- MASSAGE SUITE
- BEAUTY SALON
- SPA
- HAMMAM
- POOL
- STAFF CABINS
- BUTLER'S CABIN

UPPER DECK



- GUEST AREAS
- MASTER SUITE
- VIP SUITE
- GUEST CABINS
- CINEMA
- GYM
- MASSAGE SUITE
- BEAUTY SALON
- SPA
- HAMMAM
- POOL
- STAFF CABINS
- BUTLER'S CABIN

MAIN DECK



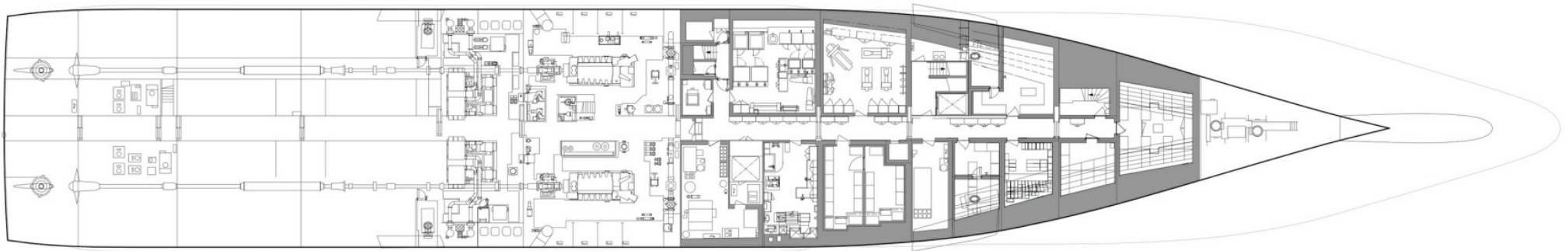
- GUEST AREAS
- MASTER SUITE
- VIP SUITE
- GUEST CABINS
- CINEMA
- GYM
- MASSAGE SUITE
- BEAUTY SALON
- SPA
- HAMMAM
- POOL
- STAFF CABINS
- BUTLER'S CABIN

LOWER DECK



- GUEST AREAS
- MASTER SUITE
- VIP SUITE
- GUEST CABINS
- CINEMA
- GYM
- MASSAGE SUITE
- BEAUTY SALON
- SPA
- HAMMAM
- POOL
- STAFF CABINS
- BUTLER'S CABIN

BOTTOM DECK



- GUEST AREAS
- MASTER SUITE
- VIP SUITE
- GUEST CABINS
- CINEMA
- GYM
- MASSAGE SUITE
- BEAUTY SALON
- SPA
- HAMMAM
- POOL
- STAFF CABINS
- BUTLER'S CABIN

BURGESS

WORLD CLASS. WORLD WIDE.

London +44 20 7766 4300	Monaco +377 97 97 81 21	New York +1 212 223 0410	Miami +1 305 672 0150	Singapore +65 9665 8990	Beverly Hills +1 310 424 5112	Palma +34 971 495 413	Athens +30 210 967 1661
Dubai +971 4 425 5874	Phuket +66 7623 9739	Hong Kong +852 6496 2094	Tokyo +81 46 738 8612	Sydney +61 499 945 557	Mumbai +91 98211 67253	Rio de Janeiro +55 21 2553-3238	Shanghai +86 187 0898 6800
Guernsey +44 1481 735360							

Advertising of these vessel(s) in printed publications, on the internet or in any other medium is not permitted without prior written permission from Burgess. All particulars are given in good faith and are believed correct but they cannot be guaranteed.

Last updated: 12 maio 2026