

# PARSIFAL III

---

# OVERVIEW.

**Built for an experienced yacht owner, the stylish sailing yacht 53.8m (176.5ft) PARSIFAL III, from the renowned Perini Navi shipyard, has an exquisite Remi Tessier-designed interior. On launch in 2005 she won no fewer than five prestigious sailing superyacht awards and has become one of the most popular sailing yachts for charter. PARSIFAL III is highly recommended for anyone looking for a combination of excellent performance with superb levels of comfort.**

As a charter guest you could begin your day with a sunrise yoga session on the large foredeck or have an early morning swim in the ocean before taking breakfast on the main deck aft. Here a large curved sofa and loose seating surround an oval dining table shaded by the overhang of the flybridge deck. After breakfast, some of the guests may choose to relax in the many lounging areas while others might want to take advantage of the calm waters and jump in to learn a new watersport. An extensive toybox has something for all ages to enjoy. However you choose to spend the morning, coming together for an al fresco lunch, perhaps prepared on the Teppanyaki grill, is the perfect opportunity to regroup and catch up with your friends and family.

Numerous entertainment options will keep the entire family entertained throughout the afternoon. Relax in the jacuzzi or on the sumptuous sunloungers, or enjoy some relaxation time in the main lounge, perhaps with a movie, all while PARSIFAL III sails on to your next port of call; if the winds are in your favour you could even be moving along under full sail at exhilarating speeds of up to 18 knots.

With the sun setting on the horizon, enjoy more time on deck taking in the view with a cocktail, followed by dinner either in the formal dining room or al fresco on the main deck aft. When it's time to retire, PARSIFAL III's vast master suite is located aft and benefits from direct access to an extra-large swimming platform – perfect for a private early morning swim. Amidship there are two further doubles and two twins with additional pullman berths. As with all of the interior guest areas, the décor is streamlined and minimalistic, with polished dark ebony and wenge woods contrasting with fine furnishings of cream leather, glass and stainless steel. A stunning retreat, your guests will feel cosseted in luxury as they fall into a deep slumber ready for another day of fun.

## Key features

---

**Winner of the Best Sailing Yacht of the Year, Best Interior Design - Sail Yacht and Best Sailing Yacht Interior at the World Superyacht Awards 2006**

---

**Recently refitted**

---

**Regularly maintained**

---

**Exercise equipment**

---

**Hydraulic swim platform**

---

**Flexible cabin configurations**

---

**Jacuzzi on the flybridge**

---

**PARSIFAL III**

Flybridge



Main deck aft



Hydraulic swim platform



Main deck bar



PARSIFAL III

Main deck dining area



Lower deck master cabin



Master bathroom en suite



Lower deck double cabin



# PARSIFAL III

Lower deck twin cabin



Aerial view



Watersports



Aerial view



PARSIFAL III

# SPECIFICATION.



Length  
**53,8m (176,5ft)**



Built  
**2005 (refitted 2021), Perini Navi, Italy**



Interior designer  
**Rémi Tessier**



Beam  
**10,7m (35,1ft)**



Draft min/max  
**-/4,5m (14,8ft)**



Displacement  
**448 tonnes**



Cruising speed  
**10 knots**



Maximum speed  
**14 knots**



Fuel consumption at cruising speed  
**100 litres per hour**



Engines  
**1 x 1.500hp Caterpillar**



Guests  
**12**



No. of guest cabins  
**6 (4 x double, 2 x twin, 2 x additional berths)**



Crew  
**9**

[View yacht on website](#)



PARSIFAL III

# TENDERS & TOYS



2 × Tenders



2 × Sailing dinghies



1 × Deck jacuzzi



2 × SeaBobs



2 × Stand up paddleboards



Windsurfer



Wakeboard



Waterskis



Inflatable tows




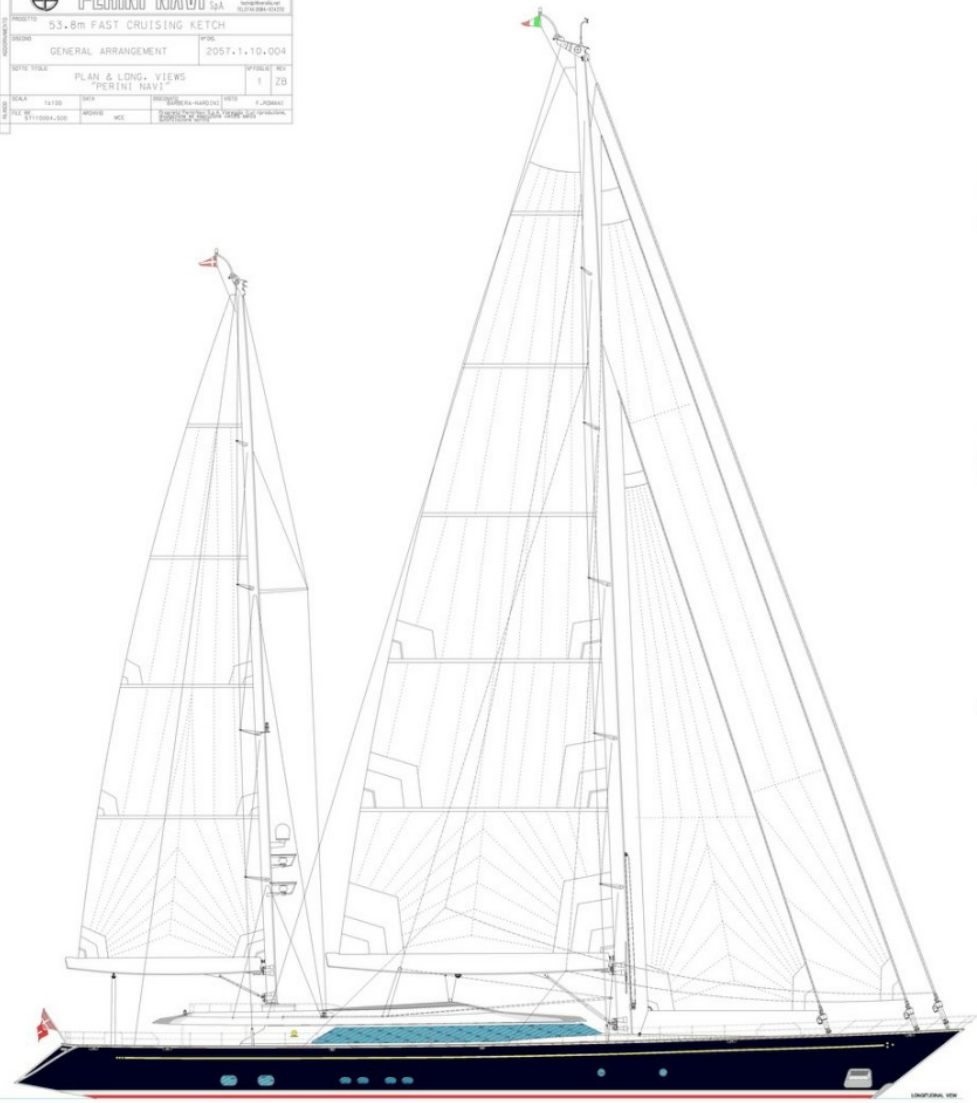
Fishing gear

6.4m guest tender, 5.8m tender, SeaBob, 2 x stand up paddle boards, waterskis, wakeboard, windsurfer, selection of towables

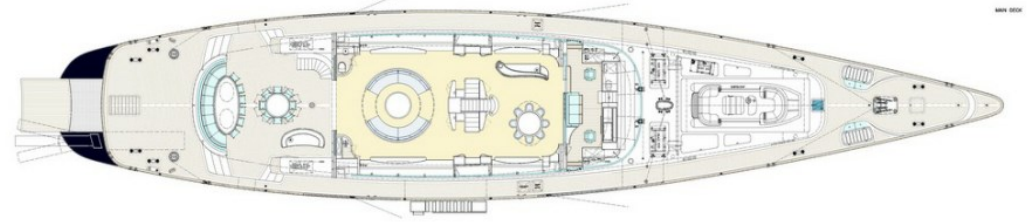
# PARSIFAL III

Deck plans

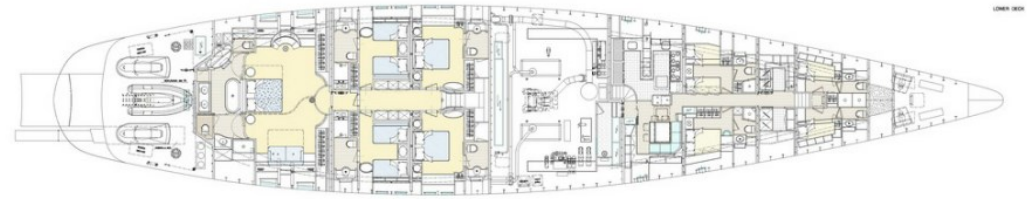
 <b>PERINI NAVI</b> S.p.A.		TELEFONO: 02.26001111 FAX: 02.26001112 E-MAIL: <a href="mailto:info@perini-navi.com">info@perini-navi.com</a> WWW: <a href="http://www.perini-navi.com">www.perini-navi.com</a>	
MODELLO: 53.8m FAST CRUISING KETCH		IPSE: 2057.1.10.004	
DESCRIZIONE: GENERAL ARRANGEMENT		SCALE: 1:100	
AUTORE: PLAN & LONG. VIEWS "PERINI NAVI"		PROGETTO: F. PINOCCI	
DATA: 11/08/12		REVISIONI: 1 ZB	
AUTORE: M.C.		PROGETTO: F. PINOCCI	



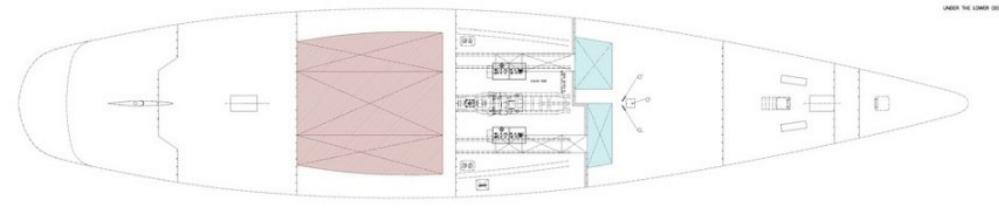
UPPER DECK



MAIN DECK



LOWER DECK



LOWER LOWER DECK

1000 PG 205711000400-001 ©2004/2012 & 31/56

# BURGESS

# WORLD CLASS. WORLD WIDE.

<b>London</b> +44 20 7766 4300	<b>Monaco</b> +377 97 97 81 21	<b>New York</b> +1 212 223 0410	<b>Miami</b> +1 305 672 0150	<b>Singapore</b> +65 9665 8990	<b>Beverly Hills</b> +1 310 424 5112	<b>Palma</b> +34 971 495 413	<b>Athens</b> +30 210 967 1661
<b>Dubai</b> +971 4 425 5874	<b>Phuket</b> +66 7623 9739	<b>Hong Kong</b> +852 6496 2094	<b>Tokyo</b> +81 46 738 8612	<b>Sydney</b> +61 499 945 557	<b>Mumbai</b> +91 98211 67253	<b>Rio de Janeiro</b> +55 21 2553-3238	<b>Shanghai</b> +86 187 0898 6800
<b>Guernsey</b> +44 1481 735360							

Advertising of these vessel(s) in printed publications, on the internet or in any other medium is not permitted without prior written permission from Burgess. All particulars are given in good faith and are believed correct but they cannot be guaranteed.

Last updated: 28 abril 2026