

NERO



NERO

SPECIFICATION.



Asking price
EUR 52.500.000



Built
2007 (refitted 2021), Corsair Yachts, China



Length
90,1m (295,6ft)



Beam
12m (39,4ft)



Draft
4,9m (16ft)



Gross tonnage
1.413



Cruising speed
13,5 knots



Maximum speed
17 knots



Flag
Cayman Islands



Lying
West Mediterranean



Class
**Lloyd's Register (LR) Lloyd's +100A1 Motor Yacht
SSC MONO G6 LMC UMS, MCA**



Exterior designer
Neil Taylor



Interior designer
Laura Pomponi



Construction
Hull - Steel, Superstructure - Steel



Crew
20



Guests
12



Cabins
6 (4 × double, 2 × double/twin)



Engines
2 × 2.333hp Caterpillar



Generators
4



Propulsion
Twin screw diesel yacht

[View yacht on website](#)

[Watch yacht video](#)



NERO

Main deck lounge



Main deck dining room



Main deck library



Master cabin



NERO

Master office



Master bathroom en suite



VIP cabin



Guest bathroom



NERO

Double cabin



Twin cabin



Sky lounge



Sky lounge bar



NERO

Observation lounge



Additional seventh cabin



Additional seventh cabin



Spa facilities



BURGESS

Discover the difference.
burgessyachts.com

NERO

Upper deck aft dining area



Upper deck aft dining area



Upper deck aft seating area



Sun deck dining



BURGESS

Discover the difference.
burgessyachts.com

NERO

Sun deck jacuzzi



Sun deck gym



Sun pad



Sun deck



NERO

Sun deck



FunAir slide



Tender



Tender

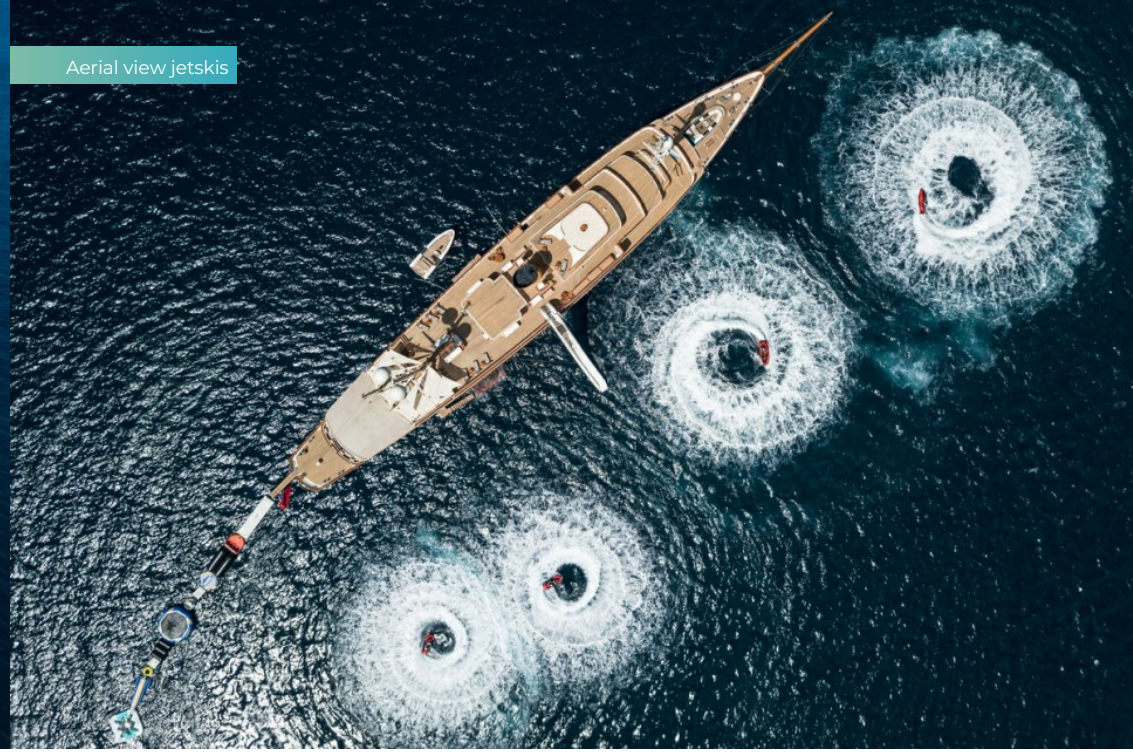


NERO

At anchor



Aerial view jetskis



BURGESS

Discover the difference.
burgessyachts.com

NERO

OVERVIEW.

For the first time in almost 10 years, the most charismatic, head-turning yacht in the world is offered for sale. Inspired by the 1920s glamour of CORSAIR IV, the last of JP Morgan's famous series of yachts, NERO comes to market fresh from an extensive refit in 2021 and with a dazzling reputation as a hugely sought-after Burgess charter yacht.

Lloyd's classed and MCA compliant, this 90.1m (295.6ft) all-steel yacht was delivered in 2007 by Corsair Yachts to award-winning international acclaim. A stem-to-stern 2016 refit saw Laura Pomponi update her interiors in a way that respected 'the history and soul of the vessel', a feat she repeated in 2021 when a sun deck gym and upper deck beauty salon were added.

She has a wealth of guest deck spaces, from her secluded top deck sunpads to her starboard-side bathing platform and boarding ladder. A vast sun deck has a sunpad-surrounded jacuzzi to sink into after working out in the fully equipped gym, casual open-air dining, and a variety of lounge and sunbathing spaces. Walkaround sidedecks lead to banquette seating forward of the bridge.

The upper deck has a sociable lounge aft and more al fresco dining served by a bar. Broad promenade sidedecks lead forward to a large sunbed overlooking the foredeck pool, which also doubles as tender storage on passage. Two further tenders are stowed midships to port and starboard.

Inside a lounge enjoys natural sunlight from skylights above and an impressive bar keeps guests refreshed. There is a beauty salon and massage room off the lobby and a passage leads forward to an observation lounge that doubles as a cinema room, and a seventh guest cabin.

The main deck has a mooring area aft and a transom gate leads to a retractable hydraulic passarelle that doubles as bathing steps. Moving forward there is expansive lounge seating and a third open-air dining area, also served by a bar, and sidedecks lead to steps up to the foredeck pool. Inside there is a separate saloon with three different lounge areas, a convivial library and a formal dining room.

Forward on the main deck is a full-beam owner's suite and his-and-hers bathrooms, each with bathtub and shower room, and a large shared walk-in wardrobe. Past a private staircase leading to the upper deck observation lounge, there is an owner's sitting room to port and a private dinette to starboard. The lower deck is home to a VIP suite with its own lounge area his-and-hers basins, two double suites and two convertible suites, all with en suite bathtubs.

Twin 2,333hp Caterpillar diesel engines give her a top speed of 17 knots, a cruising speed of 13.5 knots. Two sets of Naiad zero speed stabilisers ensure comfort underway and at anchor.

Key features

Classic styling inspired by yachting's golden age

Extensive refit in 2021, including full repaint and Laura Pomponi interior refresh

Large owner's suite with separate lounge, study and his and hers bathrooms

Incredibly flexible outdoor space on all decks for lounging, dining, and entertaining

6 guest cabins

Large main deck pool and additional jacuzzi

Fully equipped gym and dedicated spa

Zero speed stabilisers for comfort at anchor



Tenders

9.5m Corsair custom built classic tender, 8.5 metre Aquaflyte custom built RIB, 5.2m Nautica custom built RIB

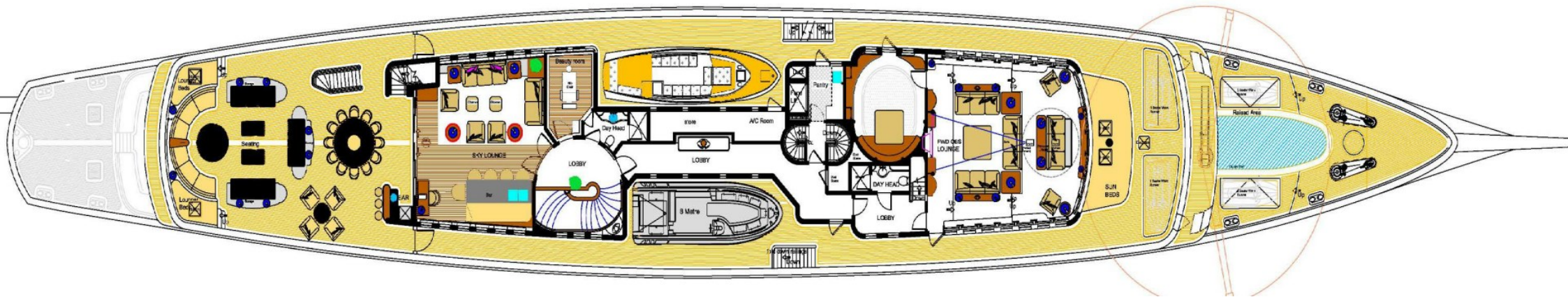
NERO

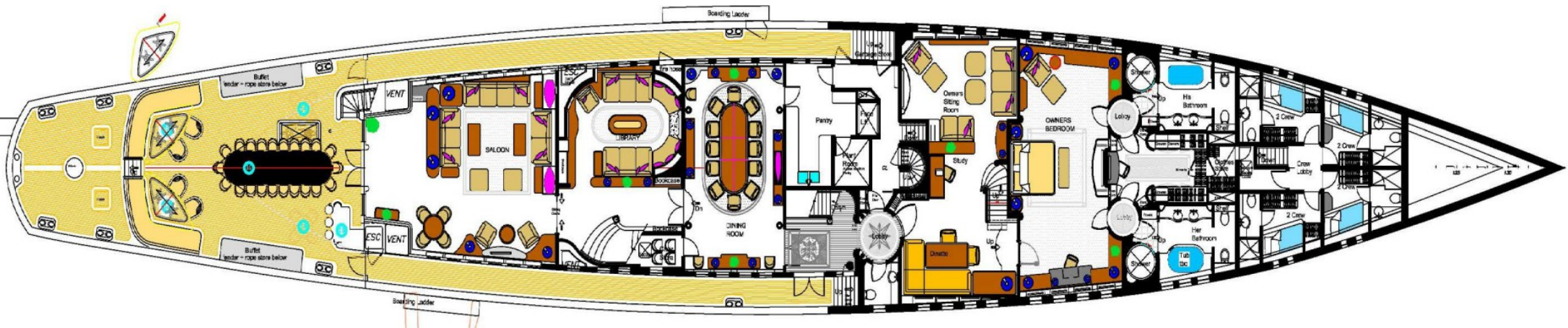
Sun deck



NERO

Upper deck







BURGESS

WORLD CLASS. WORLD WIDE.

London +44 20 7766 4300	Monaco +377 97 97 81 21	New York +1 212 223 0410	Miami +1 305 672 0150	Singapore +65 9665 8990	Beverly Hills +1 310 424 5112	Palma +34 971 495 413	Athens +30 210 967 1661
Dubai +971 4 425 5874	Phuket +66 7623 9739	Hong Kong +852 6496 2094	Tokyo +81 46 738 8612	Sydney +61 499 945 557	Mumbai +91 98211 67253	Rio de Janeiro +55 21 2553-3238	Shanghai +86 187 0898 6800
Guernsey +44 1481 735360							

Advertising of these vessel(s) in printed publications, on the internet or in any other medium is not permitted without prior written permission from Burgess. All particulars are given in good faith and are believed correct but they cannot be guaranteed.

Last updated: 28 abril 2026