

# NAVETTA 42



NAVETTA 42

# SPECIFICATION.



Asking price  
**EUR 22.500.000**



Built  
**2023, Custom Line (Ferretti), Italy**



Length  
**41,8m (137,1ft)**



Beam  
**8,1m (26,6ft)**



Draft  
**2,3m (7,5ft)**



Gross tonnage  
**348**



Cruising speed  
**12 knots**



Maximum speed  
**17 knots**



Flag  
**Dominica**



Lying  
**West Mediterranean**



Class  
**RINA Services S.p.A. (RINA) RINA**



Exterior designer  
**Zucon International Project**



Interior designer  
**Zucon International Project**



Construction  
**Hull - GRP, Superstructure - GRP, Deck - Teak**



Crew  
**7**



Guests  
**10**



Cabins  
**5 (5 × double)**



Engines  
**2 × 1.623hp Caterpillar**



Propulsion  
**Twin screw diesel yacht**

[View yacht on website](#)

[Watch yacht video](#)



NAVETTA 42







NAVETTA 42



BURGESS

Discover the difference.  
[burgessyachts.com](http://burgessyachts.com)





NAVETTA 42



NAVETTA 42



BURGESS

Discover the difference.  
[burgessyachts.com](http://burgessyachts.com)

# OVERVIEW.

**This brand-new yacht is the tenth hull in the popular NAVETTA 42 series. Delivered in 2023, the 41.8m (137.1ft) hull is of GRP construction, built to RINA classification and MCA compliance by Custom Line (Ferretti) in Ancona, Italy. The yacht is the sole design vision of Zuccon International Project.**

A large sun deck has a raised jacuzzi forward with sunpads either side and glass windscreens to preserve the views. Beneath the hardtop there is a sit-up bar with BBQ to port and lounge seating further aft to starboard, and the lounge is served by a 50in flip-down TV. Aft there is space for several sunloungers.

The upper deck aft has C-shaped sun lounge seating aft and there is open-air dining beneath the overhang. On the main deck aft is lounge seating and steps leading down to the swim platform and beach club with dayhead.

From the main deck aft the port sidedeck leads to steps up to a substantial foredeck lounge area forward where there is bench seating forward of the bridge, a forward-facing sun lounge with two coffee tables and a huge sunpad forward of that. There is also access from the sky lounge to the foredeck lounge on the starboard side.

Inside, both main saloon and sky lounge have sliding glass doors aft and either side. In the main saloon these are in the dining area and lead to folding balconies to deliver unimpeded views and more outside space. Aft of the formal dining area there are two opposing banks of sofa seating and a fold-down TV.

In the sky lounge there is lounge seating through the sliding glass doors from the open-air dining area. There are sliding glass doors either side forward in the space and these provide easy internal access to the foredeck lounge.

The full-beam owner's suite is forward on the main deck. His-and-hers en suites share a single shower room and there are two walk-in wardrobe areas as well as an owner's office.

On the lower deck, four double cabins complete accommodation for 10 guests in five cabins. There are also four crew cabins for up to eight crew including the captain's quarters on the upper deck.

Twin 1,623hp Caterpillar diesel engines give her a top speed of 16 knots, a cruising speed of 13 knots and a range of 3,200nm at her passage speed of 10 knots. A Williams 565 DieselJet tender shows behind a shell door forward of the beach club and there is a rescue tender with launch crane beneath the foredeck sunpad. An Atlas shore power converter is suitable for US facilities.

## Key features

---

**Brand new Navetta 42, under full warranty**

---

**The largest model in Ferretti Group's Custom Line range**

---

**Fold-down transom swim platform and beach club**

---

**Fold-down balconies in the main salon**

---

**Spacious sun deck with alfresco dining, lounging, and jacuzzi**

---

**Open-air lounging area on the foredeck**

---

**Accommodation for 10 guests in five cabins**

---

**Atlas shore power converter suitable for US facilities**

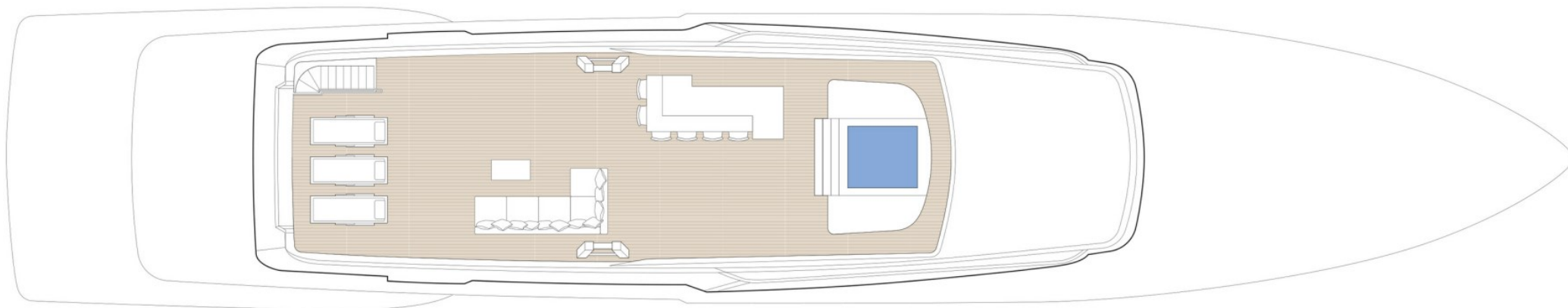
---

## Tenders

---

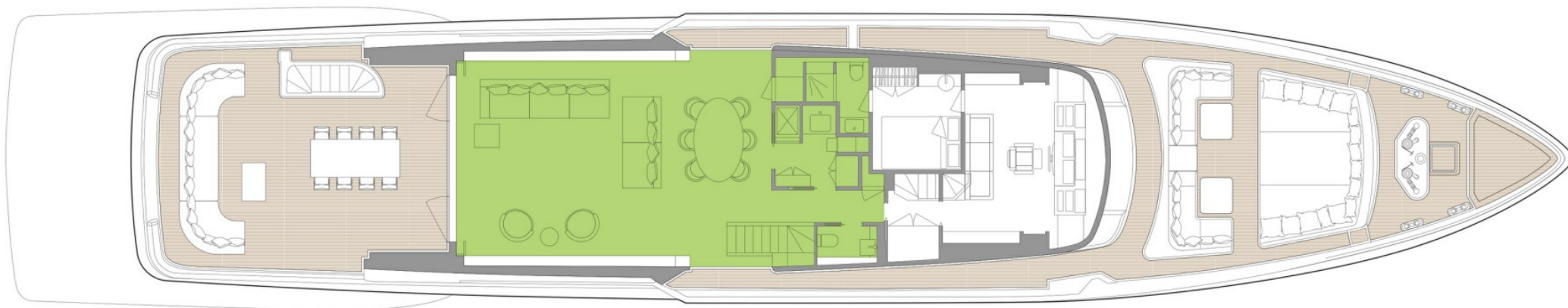
Williams 565 tender

# SUN DECK



- GUEST AREAS
- OWNER'S SUITE
- GUEST CABINS
- JACUZZI

# UPPER DECK



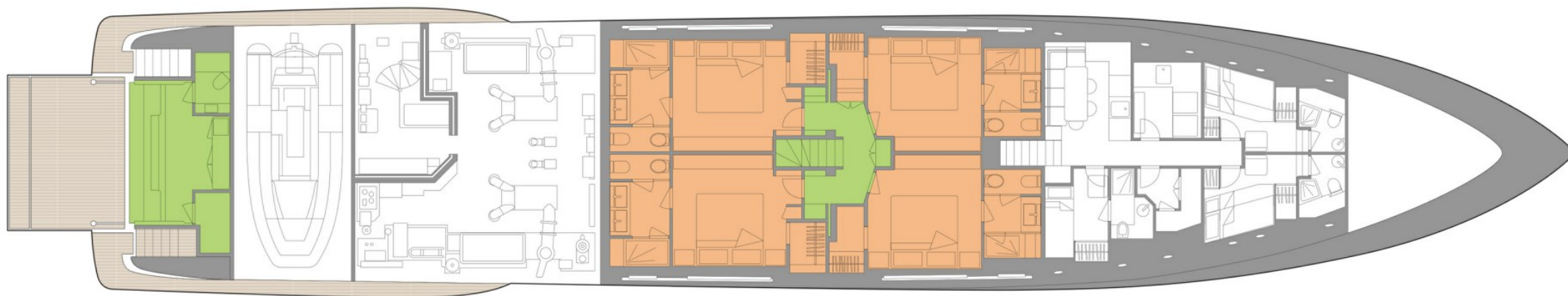
■ GUEST AREAS   ■ OWNER'S SUITE   ■ GUEST CABINS   ■ JACUZZI

# MAIN DECK



- GUEST AREAS
- OWNER'S SUITE
- GUEST CABINS
- JACUZZI

# LOWER DECK



■ GUEST AREAS   ■ OWNER'S SUITE   ■ GUEST CABINS   ■ JACUZZI

# BURGESS

# WORLD CLASS. WORLD WIDE.

<b>London</b> +44 20 7766 4300	<b>Monaco</b> +377 97 97 81 21	<b>New York</b> +1 212 223 0410	<b>Miami</b> +1 305 672 0150	<b>Singapore</b> +65 9665 8990	<b>Beverly Hills</b> +1 310 424 5112	<b>Palma</b> +34 971 495 413	<b>Athens</b> +30 210 967 1661
<b>Dubai</b> +971 4 425 5874	<b>Phuket</b> +66 7623 9739	<b>Hong Kong</b> +852 6496 2094	<b>Tokyo</b> +81 46 738 8612	<b>Sydney</b> +61 499 945 557	<b>Mumbai</b> +91 98211 67253	<b>Rio de Janeiro</b> +55 21 2553-3238	<b>Shanghai</b> +86 187 0898 6800
<b>Guernsey</b> +44 1481 735360							

Advertising of these vessel(s) in printed publications, on the internet or in any other medium is not permitted without prior written permission from Burgess. All particulars are given in good faith and are believed correct but they cannot be guaranteed.

Last updated: 28 abril 2026