

MY LEGACY



MY LEGACY

SPECIFICATION.



Asking price
EUR 44.950.000



Built
2021, Codecasa, Italy



Length
55,8m (183ft)



Beam
10,2m (33,5ft)



Draft
3,4m (11,2ft)



Gross tonnage
887



Cruising speed
14 knots



Maximum speed
18 knots



Flag
Cayman Islands



Lying
West Mediterranean



Class
**Lloyd's Register (LR) Lloyd's Register (LR) ⌘
EMEA ⌘ 100 A1, SSC, Yacht, Mono G6 ⌘ LMC,
UMS**



Exterior designer
Codecasa



Interior designer
Design Studio Spadolini



Construction
**Hull - Steel, Superstructure - Aluminium, Deck
- Teak**



Crew
13



Guests
10



Cabins
5 (3 × double, 2 × double/twin)



Engines
2 × 2.375hp Caterpillar



Generators
2 × Caterpillar



Propulsion
Twin screw diesel yacht

[View yacht on website](#)

[Watch yacht video](#)



MY LEGACY

Main saloon



Main saloon



Main deck dining



Master cabin



MY LEGACY

Master cabin



Master cabin



Master cabin lounge



Master cabin en suite



MY LEGACY

Main deck VIP cabin



Main deck foyer



Lower deck VIP cabin



Lower deck VIP cabin



MY LEGACY

Guest cabin



Sky lounge



Main deck aft



Main deck aft



MY LEGACY

Bridge deck aft dining



Bridge deck forward



Bridge deck forward



Sun deck



MY LEGACY

Sun deck



Sun deck



Sun deck aft



Sun deck pool



MY LEGACY

Sun deck pool



Sun deck pool



Swim platform



Aerial view



MY LEGACY

MY LEGACY



BURGESS

Discover the difference.
burgessyachts.com

OVERVIEW.

Built at the renowned Italian Shipyard Codecasa, MY LEGACY is a 55.8m (183ft) yacht delivered in 2021. She has a steel hull and aluminium superstructure built to Lloyd's classification with naval architecture by the shipyard. Her exteriors are by Codecasa and with a generous beam of 10.2m she offers 887GT of interior volume showcasing design by Tommaso Spadolini, with an elevator serving all guest decks.

Considerable guest deck spaces include the sun deck with sunloungers aft, a lounge area, bar and an expansive sun deck pool. On a spacious bridge deck aft there is seating and a large convertible dining area for 10 to 12 guests. Sliding glass doors lead into a sky lounge with seating surrounding a coffee table and facing a movable TV on the port aft bulkhead. Walkaround decks lead to a private lounge forward of the bridge.

Lobby stairs lead down to the main deck foyer with access to the sidedeck and a dayhead. Aft is the formal dining space and there is an open-plan lounge aft of that with seating for ten. Sliding glass doors aft bring the outside in. On the main deck aft is a lounge area partially shaded by the upper deck overhang.

She welcomes 10 guests in five cabins. The owner's suite is forward on the main deck with a separate lounge. There is a full-beam his-and-hers bathroom forward and a walk-in wardrobe. On the port side, aft of the owner's suite, is a VIP cabin that can be converted between double or twin berths. On the lower deck is a full-beam VIP cabin with a twin and double cabin aft.

As well as the main tender in the aft garage, there is a rescue tender forward beneath a flush deck hatch. Twin 2,375hp Caterpillar 3512E Tier III diesel engines give her a top speed of 18 knots, she cruises at 14 knots and has a maximum range of 5,000nm. Zero speed stabilisers ensure comfort at anchor on arrival.

Key features

2021 built Codecasa

Expansive sun deck pool

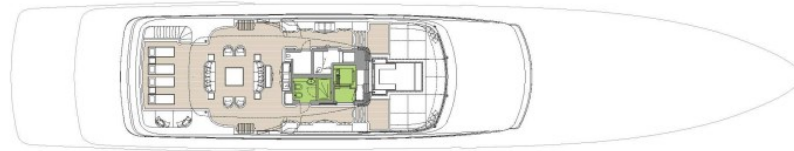
Light and only private owners use

Elevator serving all decks

Timeless and classical Tommaso Spadolini interior

Impressive volume at 887 GT

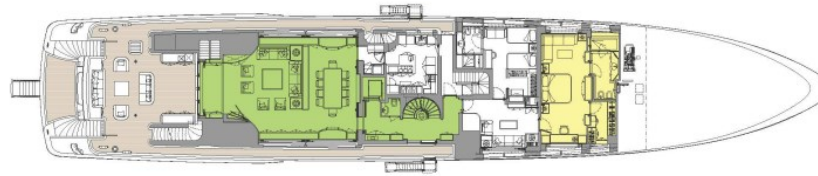
LY3 compliant



SUN DECK



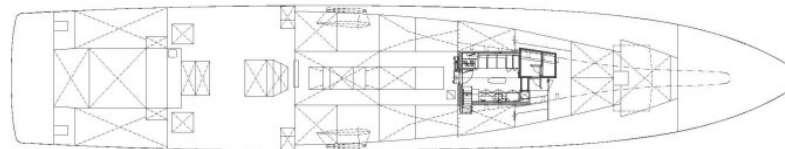
BRIDGE DECK



MAIN DECK



LOWER DECK



TOP TANK DECK

■ GUEST AREAS ■ MASTER SUITE ■ VIP SUITE ■ GUEST CABINS

BURGESS

WORLD CLASS. WORLD WIDE.

London +44 20 7766 4300	Monaco +377 97 97 81 21	New York +1 212 223 0410	Miami +1 305 672 0150	Singapore +65 9665 8990	Beverly Hills +1 310 424 5112	Palma +34 971 495 413	Athens +30 210 967 1661
Dubai +971 4 425 5874	Phuket +66 7623 9739	Hong Kong +852 6496 2094	Tokyo +81 46 738 8612	Sydney +61 499 945 557	Mumbai +91 98211 67253	Rio de Janeiro +55 21 2553-3238	Shanghai +86 187 0898 6800
Guernsey +44 1481 735360							

Advertising of these vessel(s) in printed publications, on the internet or in any other medium is not permitted without prior written permission from Burgess. All particulars are given in good faith and are believed correct but they cannot be guaranteed.

Last updated: 28 abril 2026