

MESERRET II



MESERRET II

SPECIFICATION.



Asking price
EUR 10.200.000



Built
**1978 (refitted 2021), Cammenga Jachtbouw,
The Netherlands**



Length
57,2m (187,7ft)



Beam
9,6m (31,5ft)



Draft
3,3m (10,8ft)



Gross tonnage
683



Cruising speed
12 knots



Maximum speed
16 knots



Flag
Cayman Islands



Lying
East Mediterranean



Class
**Lloyd's Register (LR) Lloyd's, 100 A1, YACHT LMC,
MCA**



Exterior designer
De Vries Lentsch



Interior designer
Bannenberg Design/Dimitri Koutoukos



Construction
**Hull - Steel, Superstructure - Aluminium, Deck
- Teak**



Crew
18



Guests
16



Cabins
9 (5 x double, 2 x twin, 2 x single)



Engines
2 x 1.350hp Paxman



Generators
3



Propulsion
Twin screw diesel yacht

[View yacht on website](#)

[Watch yacht video](#)



MESERRET II



BURGESS

Discover the difference.
burgessyachts.com

MESERRET II



BURGESS

Discover the difference.
burgessyachts.com

MESERRET II



BURGESS

Discover the difference.
burgessyachts.com

MESERRET II



BURGESS

Discover the difference.
burgessyachts.com

MESERRET II



BURGESS

Discover the difference.
burgessyachts.com

MESERRET II



BURGESS

Discover the difference.
burgessyachts.com

MESERRET II



BURGESS

Discover the difference.
burgessyachts.com

MESERRET II



MESERRET II

OVERVIEW.

The 57.2m (187.7ft) motor yacht MESERETT II has a steel hull and aluminium superstructure constructed to Lloyd's classification and MCA compliance by the Dutch shipyard Cammenga Jachtbouw.

She was delivered in 1978 and rebuilt and substantially refitted in 2004, 2009 and 2015. Her exterior design by De Vries Lentsch evokes the golden age of yachting and her original Bannenberg interiors were restyled by Dimitri Koutoukos in 2004.

A large sun deck has a raised jacuzzi forward surrounded by sunpads and a semi-circular sit-up wet bar beneath the hardtop forward of the funnel. Aft of the funnel there is a boat deck with two tenders, 6.5m (21.3ft) and 6.1m (20ft), and a range of toys launched by two deck cranes. With the tenders deployed, the boat deck presents a range of relaxation and entertainment options.

On the upper deck aft there is open-air dining beneath the overhang and a large deck space with a sun lounge with C-shaped banquette seating and armchairs and a pop-up aft-facing TV for movie nights.

There is another covered open-air lounge on the main deck aft. Both main and upper decks have walkaround sidedecks and there is a Portuguese bridge lounge forward on the upper deck and toy stowage forward on the main deck.

Boarding is via hydraulic side gangways port and starboard, both with shell door swim platforms, and a hydraulic passerelle port aft.

From the upper deck aft sliding glass doors lead into a sky lounge with a sit-up bar to starboard, lounge seating to port, a DJ station and a dayhead with internal and external access. A central spiral staircase leads down to the main deck lobby where there are two dayheads, a main saloon aft and a large formal dining room to starboard, adjacent to the galley.

She welcomes up to 14 guests in eight cabins with two single cabins for secretaries or security staff. The owner's suite, forward on the main deck, has access from the lobby and from the deck. It features a private office, bedroom, walk-in dressing room and a marble bathroom with a rain shower.

There is a VIP suite on the upper deck and the lower deck is home to four double cabins and a twin cabin as well as the two staff cabins.

Twin 1,350hp Paxman diesel engines give her a top speed of 16 knots, a cruising speed of 15 knots and a transatlantic range of 6,000nm at her passage speed of 12 knots. Vosper Thornycroft stabilisers deliver comfort underway.

Key features

Genuine classic gentleman's yacht

Flexible accommodation comprising 7 principal guest cabins sleeping 14 with 2 further children/staff single cabins

Impressive cruising range of 6,000 nm at 12 kts

Dutch built and extensively refitted

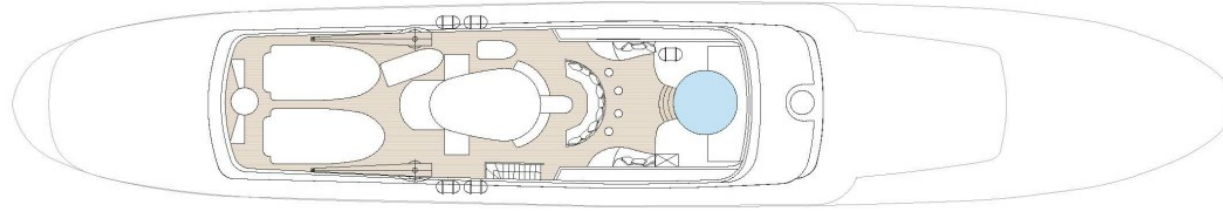
Elegant canoe stern design

Tenders

6.1m Novamarine hard bottom inflatable
Yamaha 250hp outboard, 4.2m Ribo Zodiac
25hp diesel outboard

MESERRET II

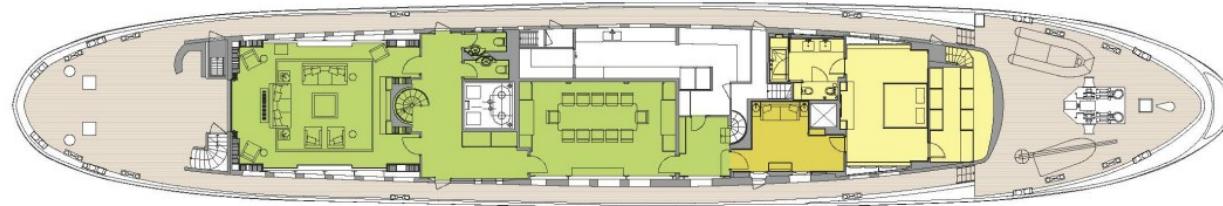
Deck plans



SUN DECK



BRIDGE DECK



MAIN DECK



LOWER DECK

■ GUEST AREAS ■ MASTER SUITE ■ VIP SUITE ■ GUEST CABINS ■ MASTER SUITE OFFICE ■ POOL

BURGESS

WORLD CLASS. WORLD WIDE.

London +44 20 7766 4300	Monaco +377 97 97 81 21	New York +1 212 223 0410	Miami +1 305 672 0150	Singapore +65 9665 8990	Beverly Hills +1 310 424 5112	Palma +34 971 495 413	Athens +30 210 967 1661
Dubai +971 4 425 5874	Phuket +66 7623 9739	Hong Kong +852 6496 2094	Tokyo +81 46 738 8612	Sydney +61 499 945 557	Mumbai +91 98211 67253	Rio de Janeiro +55 21 2553-3238	Shanghai +86 187 0898 6800
Guernsey +44 1481 735360							

Advertising of these vessel(s) in printed publications, on the internet or in any other medium is not permitted without prior written permission from Burgess. All particulars are given in good faith and are believed correct but they cannot be guaranteed.

Last updated: 14 maio 2026