

LAURENTIA



LAURENTIA

OVERVIEW.

A finalist at the 2018 World Superyacht Awards with interior designed by Radyca, Miami, LAURENTIA blends indoor and outdoor living seamlessly with sliding glass doors and floor to ceiling windows that bring a feeling of light and openness to the inside spaces.

A spacious sun deck with amazing views is equipped with a jacuzzi, sunbeds, a sit up bar and shaded al fresco dining. You can watch movies under the stars here too. The upper deck aft has dining and lounge areas, there is more lounging on the main deck aft, which transforms to a cosy outdoor cinema at night. A more intimate Portuguese bridge seating area forward on the upper deck means there's a space for every mood.

She has a fabulous beach club, air conditioned with lounge seating and exercise equipment for waterside workouts, and her extensive range of watertoys means guests will have a fabulous time in the open air.

Inside, LAURENTIA is the ideal craft for entertaining and leisure, whether that's sitting around the sky lounge bar, watching movies outdoors or sitting back in the spacious main saloon after formal dining. She welcomes 12 guests across six cabins: a full beam master suite on the main deck and a full beam VIP, two double and two twin cabins on the lower deck.

Captain Steve leads an incredible crew of 12 and recent broker feedback includes 'Clients were blown away and raved about the experience, all very impressive.' She's perfect for big occasions and family getaways so get in touch today to ask more about LAURENTIA.

Key features

On the charter market since 2018, offering 102m² sun deck with jacuzzi, sunbeds and dining area

12m Intrepid Nomad tender and extensive watertoy inventory

Outdoor cinema screen

Beach club at sea level

State-of-the-art gym equipment

Zero speed stabilisers to reduce any rolling motion while at anchor

LAURENTIA

At anchor



Main deck seating



Main deck lounge



Main deck lounge



LAURENTIA

Main deck dining area



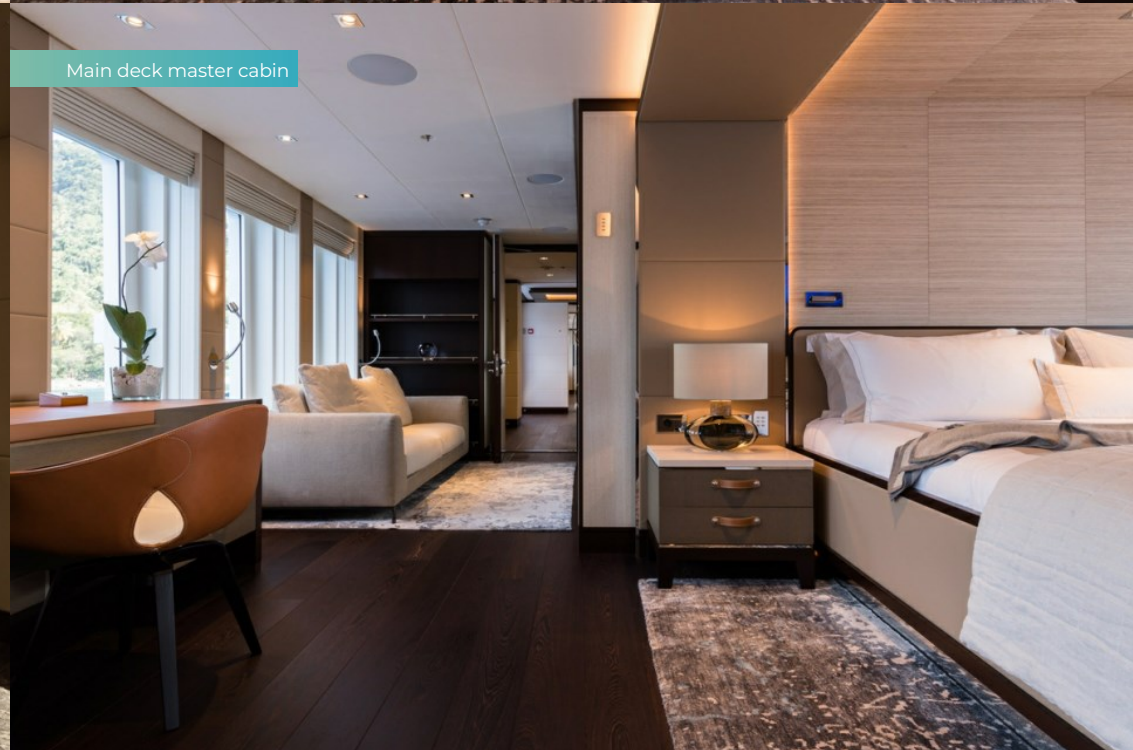
Main deck master cabin



Main deck master cabin



Main deck master cabin



LAURENTIA

Main deck master study



Main deck master cabin bathroom en suite



Main deck master cabin shower room en suite



Lower deck VIP cabin



LAURENTIA

Lower deck VIP cabin shower room en suite



Lower deck VIP cabin bathroom en suite



Lower deck twin cabin



Upper deck lounge



LAURENTIA

Upper deck aft lounge



Jacuzzi



Outdoor cinema



Beach club



LAURENTIA

Watertoys



Aerial view



BURGESS

Discover the difference.
burgessyachts.com

LAURENTIA

SPECIFICATION.



Length
55m (180,5ft)



Built
2017, Heesen, The Netherlands



Interior designer
Radyca



Beam
9,6m (31,5ft)



Draft
3,2m (10,5ft)



Gross tonnage
740



Cruising speed
13 knots



Maximum speed
16 knots



Fuel consumption at cruising speed
400 litres per hour



Engines
2 x 1.400hp MTU



Guests
12



No. of guest cabins
6 (4 x double, 2 x twin)



Crew
13

[View yacht on website](#)



LAURENTIA

TENDERS & TOYS



3 × Tenders



1 × Deck jacuzzi



2 × Waverunners



4 × SeaBobs



1 × eFoil



3 × Kayaks



3 × Stand up paddleboards



Wakeboard



Wakesurf



Waterskis



Anti-jellyfish pool



Inflatable tows



Scuba diving equipment



Snorkelling gear



Fishing gear



RYA training centre for jetskis
& waverunners

Intrepid 40' Nomad tender, Castoldi 21' tender with landing craft bow for beach landings, Rib-X 20' tender, 2 x Sea-Doo GXT3000 jetskis, Lift E-Foil, 3 x kayaks (1 double, 2 single), 2 x wakeboards, waterskis, Monoski, Wakesurf board, 4 x SeaBobs, 4 x Gocycle electric assist bicycles, 3 x inflatable stand up paddle boards, 3 x stand up paddle boards, Dive equipment, Snorkelling gear, 6 x fishing rods and fishing tackle, 4x Towables, Kids sand and beach toys, Badminton setup, Anti-Jellyfish sea pool, Board games (Monopoly, Scrabble, Poker set, etc.) Approved RYA training centre for guests' use of water toys

LAURENTIA

FITNESS & WELLNESS



Abdominal roller



Boxing equipment



Free weights



Resistance bands



Rowing machine



Suspension trainer



Training bench



Upright stationary bike

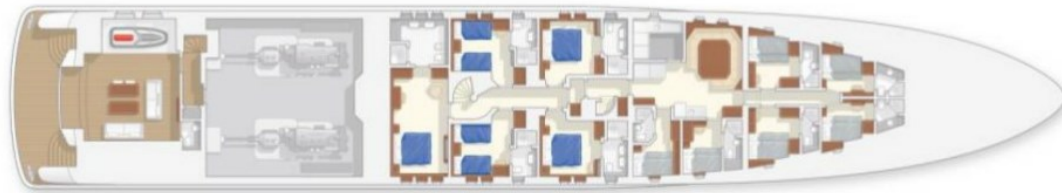
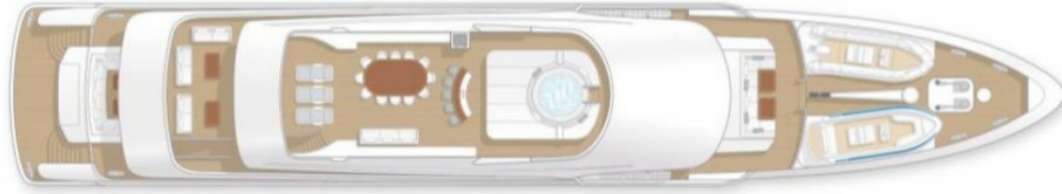
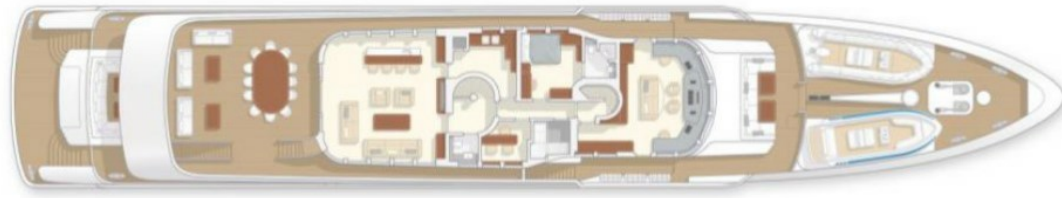


Yoga mats

Peloton bike, Exercise bike, Rowing machine, Arm bike, Yoga blocks & mats, Elastic bands, Barbell and plates, Adjustable lift bench, Dumbbells (8-24 kg), Free weights, Abs wheel, Pull-up bar

LAURENTIA

Deck Plans



BURGESS

WORLD CLASS. WORLD WIDE.

London +44 20 7766 4300	Monaco +377 97 97 81 21	New York +1 212 223 0410	Miami +1 305 672 0150	Singapore +65 9665 8990	Beverly Hills +1 310 424 5112	Palma +34 971 495 413	Athens +30 210 967 1661
Dubai +971 4 425 5874	Phuket +66 7623 9739	Hong Kong +852 6496 2094	Tokyo +81 46 738 8612	Sydney +61 499 945 557	Mumbai +91 98211 67253	Rio de Janeiro +55 21 2553-3238	Shanghai +86 187 0898 6800
Guernsey +44 1481 735360							

Advertising of these vessel(s) in printed publications, on the internet or in any other medium is not permitted without prior written permission from Burgess. All particulars are given in good faith and are believed correct but they cannot be guaranteed.

Last updated: 28 abril 2026