

ICE BEAR



ICE BEAR

SPECIFICATION.



Asking price
EUR 8.024.320



Built
1988, Feadship, De Vries, The Netherlands



Length
52m (170,6ft)



Beam
9,3m (30,5ft)



Draft
3,1m (10,2ft)



Gross tonnage
614



Cruising speed
13 knots



Maximum speed
15 knots



Flag
Cayman Islands



Lying
USA



Class
American Bureau of Shipping (ABS)



Exterior designer
De Voogt



Interior designer
Paola D. Smith



Construction
Hull - Steel, Superstructure - Aluminium, Deck - Teak



Crew
11



Guests
10



Cabins
5 (3 x double, 2 x twin)



Engines
2 x 1.175hp Caterpillar



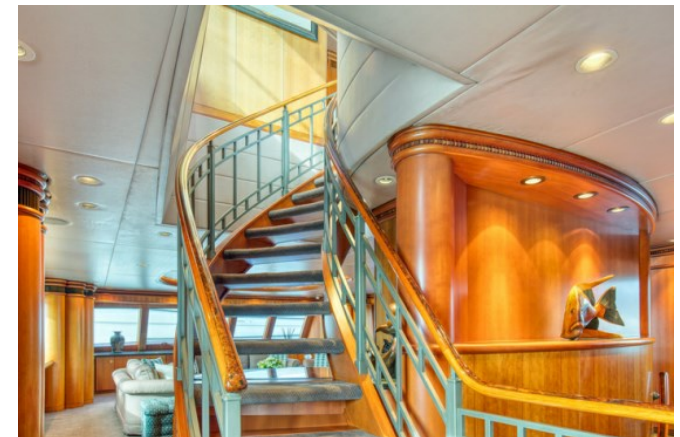
Propulsion
Twin screw diesel yacht

Note

Not available for sale to US residents while in US waters.

[View yacht on website](#)

[Watch yacht video](#)



ICE BEAR

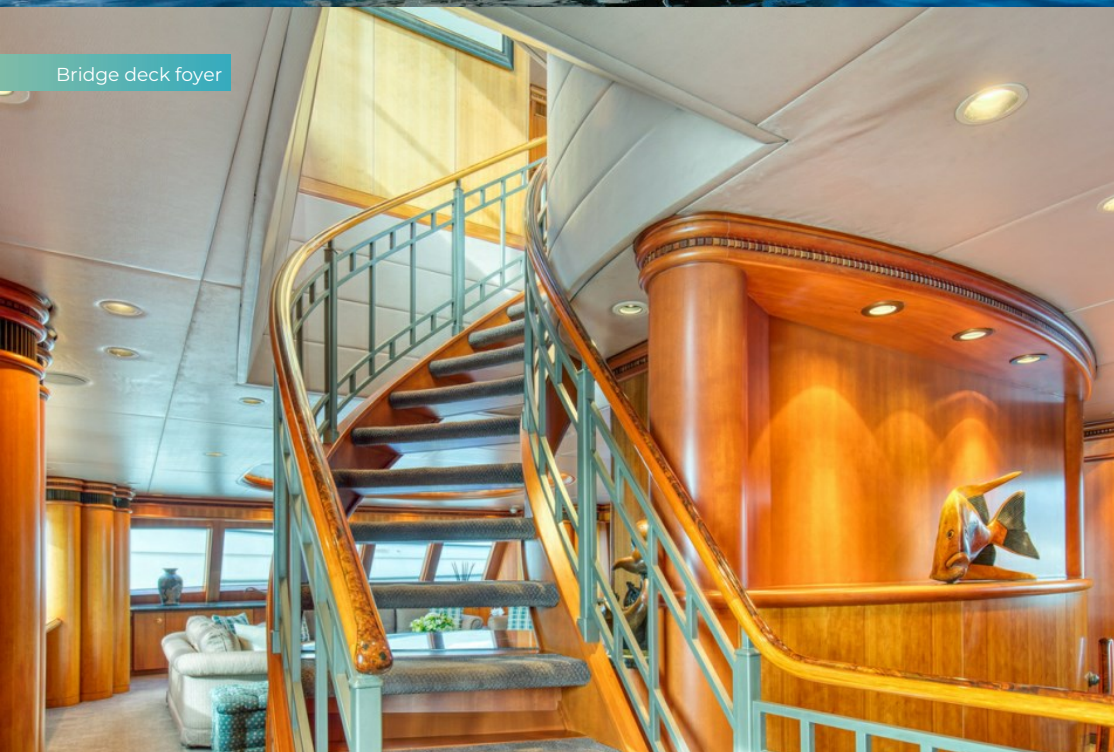
Exterior



Bridge deck lounge



Bridge deck foyer



Observation lounge



ICE BEAR

Observation lounge



Main deck foyer



Main deck dining



Master cabin office



ICE BEAR

Master cabin office



Master cabin



Master cabin



Master cabin en suite



ICE BEAR

Master cabin en suite



Lower deck foyer



Guest cabin



Guest cabin en suite



ICE BEAR

Guest cabin



Guest cabin en suite



Guest cabin



Guest cabin en suite



ICE BEAR

Bridge



Galley



Galley / stew pantry



Engine room



ICE BEAR

Main deck aft



Main deck aft



Cockpit



Crows nest



ICE BEAR

Bridge deck aft



Foredeck



Tender garage



Tender garage



ICE BEAR

Exterior



Exterior



At anchor



BURGESS

Discover the difference.
burgessyachts.com

ICE BEAR

OVERVIEW.

The 52m (170.6ft) yacht ICE BEAR was delivered in 1988 by the distinguished Dutch shipyard, Feadship De Vries, with exterior styling by De Voogt. At 614 gross tonnes, with a beam of 9.3m (30.5ft), the yacht offers plenty of spacious lounges and communal areas for guests to relax and enjoy quality time at sea.

There are 5 cabins on board which sleep a total of 10 guests. The master suite on the main deck is full beam and features a private study, his and hers en suite bathrooms, a walk-in wardrobe, and large windows providing plenty of light. The four remaining cabins on the lower deck have colourful themes, and are spacious with seating areas and en suite bathrooms.

Guests can enjoy relaxing while underway in the sky lounge, or gathering for a meal in the main saloon where they will find a soothing neutral colour pallet balanced by large windows for an airy feel. An observation lounge is also located on the upper deck, where guests can congregate over cocktails and take in the views after a long day on the water. The exterior main deck offers two fixed fishing chairs, a range of seating, and a crows nest with outdoor helm station.

Fitted with two 1,175hp Caterpillar engines ICE BEAR offers complete comfort at sea while reaching speeds up to 15 knots, and 13 knots cruising. She is also trans-Atlantic with a range of 4,850 nautical miles.

Key features

Professionally maintained by full time crew

Private usage only, never chartered

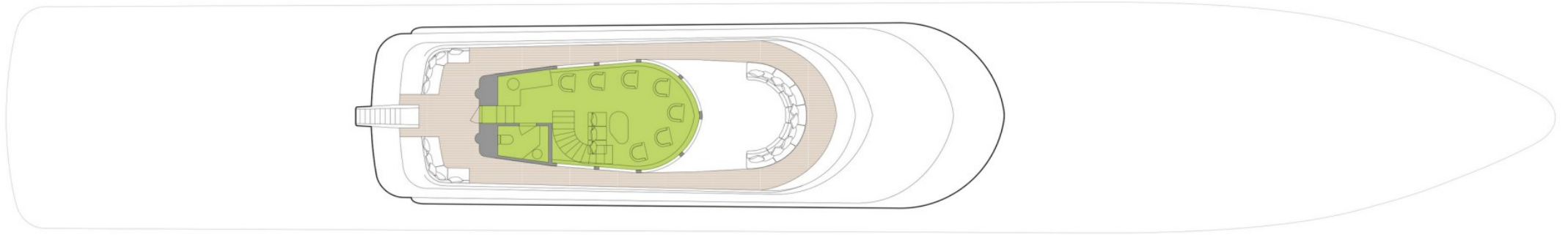
Recent ABS inspection completed

Vintage Feadship details and timeless design

Tenders

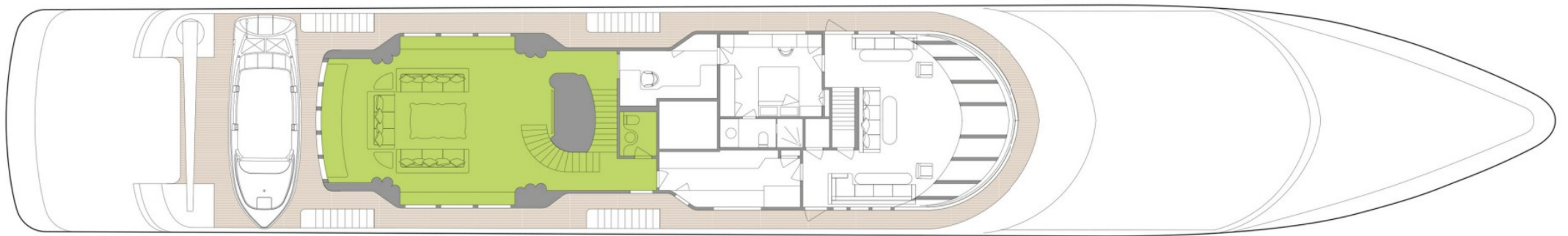
28ft Shamrock sportfisher, 18ft RIB

SKY LOUNGE



 GUEST AREAS  MASTER SUITE  GUEST CABINS

BRIDGE DECK



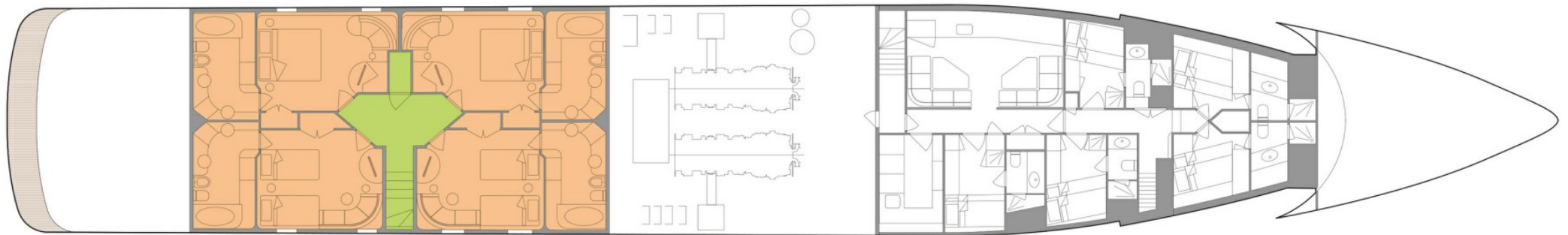
■ GUEST AREAS ■ MASTER SUITE ■ GUEST CABINS

MAIN DECK



■ GUEST AREAS ■ MASTER SUITE ■ GUEST CABINS

LOWER DECK



 GUEST AREAS  MASTER SUITE  GUEST CABINS

BURGESS

WORLD CLASS. WORLD WIDE.

London +44 20 7766 4300	Monaco +377 97 97 81 21	New York +1 212 223 0410	Miami +1 305 672 0150	Singapore +65 9665 8990	Beverly Hills +1 310 424 5112	Palma +34 971 495 413	Athens +30 210 967 1661
Dubai +971 4 425 5874	Phuket +66 7623 9739	Hong Kong +852 6496 2094	Tokyo +81 46 738 8612	Sydney +61 499 945 557	Mumbai +91 98211 67253	Rio de Janeiro +55 21 2553-3238	Shanghai +86 187 0898 6800
Guernsey +44 1481 735360							

Advertising of these vessel(s) in printed publications, on the internet or in any other medium is not permitted without prior written permission from Burgess. All particulars are given in good faith and are believed correct but they cannot be guaranteed.

Last updated: 28 abril 2026