

# GRAND DAPHNE

---



# OVERVIEW.

**Explore the unspoilt, unique and abundant natural wonders of the Galapagos on board GRAND DAPHNE, a yacht uniquely suited to cruising this staggeringly rich and rewarding environment. Extensive, versatile deck spaces and huge windows allow her guests to immerse themselves in this incredibly important UNESCO World Heritage Centre.**

Guests can start the day gently with yoga on the spacious sun deck or a refreshing morning swim in these pristine waters. A delicious breakfast is served in the main deck dining room while you plan the day's exploration with the captain and the professional on board guide, a highly experienced and accredited naturalist who will create each day's adventure according to your interests and build the excitement for every day.

After taking the tender ashore, stand up paddleboarding along the shoreline or enjoying a snorkel safari with your guide pointing out the miracles of marine life on show. Back on board, relax on the lounge seating on the main deck after as you discuss what you've seen and share photos. Next, lunch is served on the sun deck, where the crew has set up a dining table.

Sunbathe in the afternoon or catch up on a book in the convivial main saloon as the captain takes the yacht to the next destination. You arrive at sunset as the yacht is bathed in golden light, pick up a sundowner from the bar on the main deck aft then head up to the sun deck to wonder at a billion stars dazzling overhead.

When dinner is served, head down to the dining room for some deliciously unique gastronomy then you and your guests adjourn to the main deck aft to take another drink from the bar and reflect on yet another unforgettable day. Who knows what adventures tomorrow will bring?

GRAND DAPHNE welcomes 12 guests in nine flexible cabins across three decks. These include a full beam master suite forward on the main deck and several convertible cabins, making her extremely well suited to parties of families or friends looking to experience the uniqueness of the Galapagos in complete comfort.

## Key features

---

**GRAND DAPHNE was designed to incorporate more space, light and comfort to take in the Galapagos' natural beauty**

---

**Spacious and ample accommodations for up to 12 guests in eight cabins**

---

**Unique layout to maximize options for relaxing and socializing**

---

**Bright, convivial main deck lounge perfect for stylish exploration of this unique archipelago**

---

**Abundant indoor dining lounge equipped with two tables that together seat 16**

---

**Dedicated photographer for each charter**

---

# GRAND DAPHNE

Main deck lounge



Main deck lounge



Main deck dining area



Main deck dining area



# GRAND DAPHNE

Master cabin



Master cabin



Double cabin



Twin cabin



# GRAND DAPHNE

Twin cabin



Guest en suite



Main deck aft



Main deck aft bar



# GRAND DAPHNE

Sun deck



Sun deck



Sun deck



At anchor



## GRAND DAPHNE

# SPECIFICATION.



Length  
**39,8m (130,5ft)**



Built  
**2011 (refitted 2020), Broward Marine**



Beam  
**7,2m (23,6ft)**



Draft  
**1,8m (5,9ft)**



Gross tonnage  
**273**



Cruising speed  
**10 knots**



Maximum speed  
**12 knots**



Fuel consumption at cruising speed  
**115 litres per hour**



Generators  
**2**



Guests  
**12**



No. of guest cabins  
**8 (1 x double, 5 x double/twin, 1 x twin, 1 x single)**



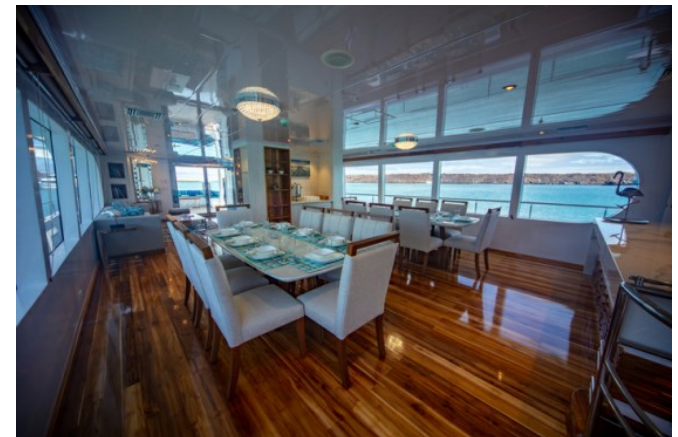
Crew  
**10**

### Note

Not available for charter to US residents while in US waters.

[View yacht on website](#)

[Watch yacht video](#)



GRAND DAPHNE

# TENDERS & TOYS



1 x Towed tender



2 x Tenders



2 x Kayaks



2 x Stand up paddleboards



Scuba diving equipment



Snorkelling gear



Fishing gear

2 x Apex Zodiac tenders (12 man) with 20hp Yamaha engine 2 x Inflatable kayaks (1 man & 2 man) 2 x Stand up paddle boards \*Rendezvous diving only \*Rendezvous fishing only

# BURGESS

# WORLD CLASS. WORLD WIDE.

<b>London</b> +44 20 7766 4300	<b>Monaco</b> +377 97 97 81 21	<b>New York</b> +1 212 223 0410	<b>Miami</b> +1 305 672 0150	<b>Singapore</b> +65 9665 8990	<b>Beverly Hills</b> +1 310 424 5112	<b>Palma</b> +34 971 495 413	<b>Athens</b> +30 210 967 1661
<b>Dubai</b> +971 4 425 5874	<b>Phuket</b> +66 7623 9739	<b>Hong Kong</b> +852 6496 2094	<b>Tokyo</b> +81 46 738 8612	<b>Sydney</b> +61 499 945 557	<b>Mumbai</b> +91 98211 67253	<b>Rio de Janeiro</b> +55 21 2553-3238	<b>Shanghai</b> +86 187 0898 6800
<b>Guernsey</b> +44 1481 735360							

Advertising of these vessel(s) in printed publications, on the internet or in any other medium is not permitted without prior written permission from Burgess. All particulars are given in good faith and are believed correct but they cannot be guaranteed.

Last updated: 28 abril 2026