

CRYSTAL LADY



CRYSTAL LADY

SPECIFICATION.



Asking price
AUD 5.000.000



Built
2002 (refitted 2023), Warren Yachts, Australia



Length
35m (114,8ft)



Beam
7,4m (24,3ft)



Draft
2,4m (7,9ft)



Gross tonnage
243



Cruising speed
13 knots



Maximum speed
27 knots



Flag
Australia



Lying
Australasia



Class
American Bureau of Shipping (ABS) ABS



Exterior designer
Phil Curran/Peter Lowe



Interior designer
Sam Sorgiovanni



Construction
Hull - GRP, Superstructure - GRP, Deck - Teak



Crew
4



Guests
8



Cabins
4 (2 x double, 2 x twin)



Propulsion
Twin screw diesel yacht

Note

Not available for sale to US residents while in US waters.

[View yacht on website](#)

[Watch yacht video](#)



CRYSTAL LADY

Main deck lounge



Main deck lounge



Main deck dining room



Master cabin



CRYSTAL LADY

Master cabin



Master cabin en suite bathroom



Double guest cabin



Guest cabin en suite bathroom



CRYSTAL LADY

Twin guest cabin



Sky lounge



Bridge



Galley



CRYSTAL LADY

Engine room



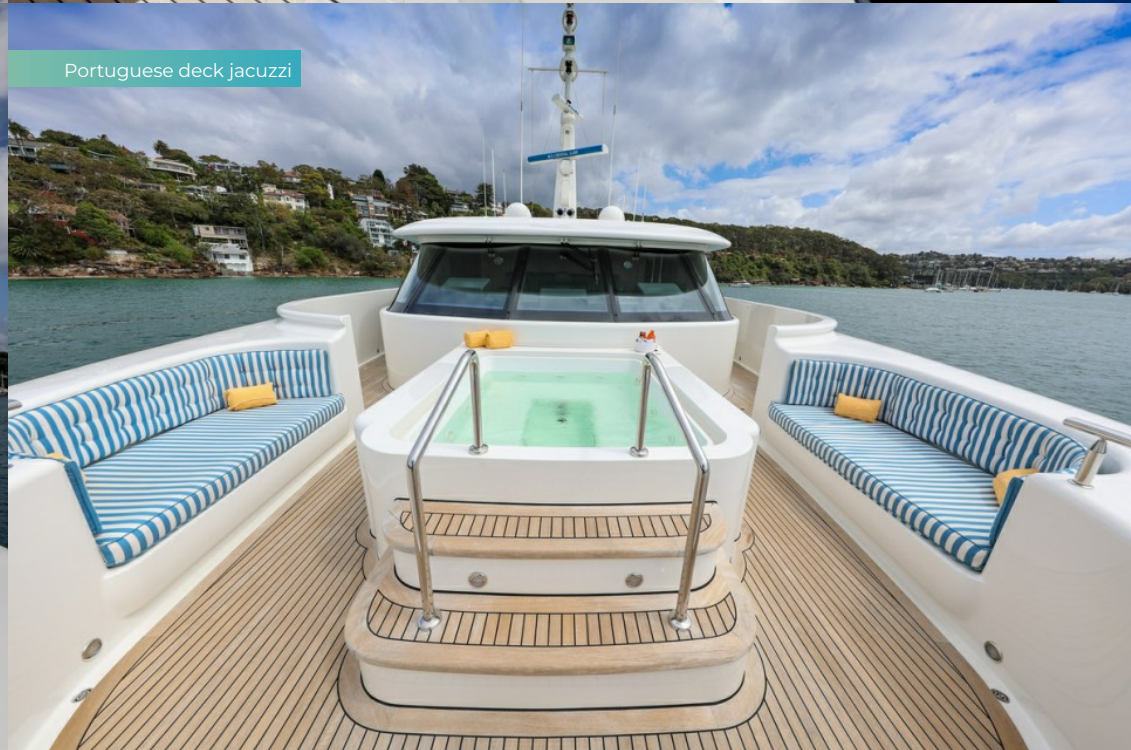
Portuguese deck



Portuguese deck



Portuguese deck jacuzzi



CRYSTAL LADY

Foredeck



Bridge deck aft



Bridge deck aft



Main deck aft



CRYSTAL LADY

Main deck aft



Swim platform BBQ



Stern



Cruising



CRYSTAL LADY

Cruising



Cruising



Cruising



Cruising



BURGESS

Discover the difference.
burgessyachts.com

CRYSTAL LADY

Aerial view



BURGESS

Discover the difference.
burgessyachts.com

OVERVIEW.

CRYSTAL LADY is a 35m (114.8ft) motor yacht built in GRP to ABS classification by Australian shipyard Warren Yachts, delivered in 2002 and most recently refitted in 2023. Her interior styling is by celebrated designer Sam Sorgiovanni with Phil Curran and Peter Lowe creating the yacht's exterior lines, completing her all-Australian pedigree.

While completing her five-year ABS survey in 2023 her main engines and stabilisers were serviced, all tanks were cleaned, new water heaters were fitted, the AV system was upgraded, hull and propellers were antifouled and the tender was overhauled. All four air conditioning chillers were replaced and new batteries were fitted in the last two years.

On passage her 5.4m (17.7ft) in board diesel RIB tender and toys are stowed on the bridge deck aft. When those are launched by deck crane the space serves many purposes, from sun lounging to entertainment, and could serve as an open-air dining option. Walkaround sidedecks lead forward to a raised foredeck sunpad, beneath which is a jacuzzi, flanked by banquette seating either side. There is another raised sunpad nestling in the bow.

The main deck aft is devoted to open-air dining with an oval dining table and club chairs shaded by the overhang. Aft of that is an arc of sun lounge seating and steps either side lead down to the swim platform. A hydraulic bathing platform provides easy access to the water, there is a sport-fishing chair fitted to port and the sliding top of a buffet bar reveals a BBQ.

The main saloon has three sofas around a coffee table facing a large TV to starboard. Forward of a staircase leading to the sky lounge is a formal dining room and steps to starboard lead down to lower deck accommodation. The sky lounge itself has convivial C-shaped sofa seating around a coffee table.

She welcomes eight guests in four cabins. The full-beam owner's suite is forward on the main deck, with vanity table and en suite with bathtub. On the lower deck there is a full-beam VIP double cabin and two twin cabins, all en suite. She also sleeps up to four crew.

Twin 2,735hp MTU diesel engines give this 243GT yacht a lively top speed of 27 knots, she cruises at 13 knots and has a maximum range of 1,647nm at her passage speed of 12 knots. Naiad 420 stabilisers reduce roll underway.

Key features

Sleek exterior design with striking lines by Phil Curran and Peter Lowe

Elegant interior design by Sam Sorgiovanni

Hydraulic swim platform with sport-fishing chair and outdoor BBQ

Jacuzzi and sun lounging on the foredeck

Impressive top speed of 27 knots

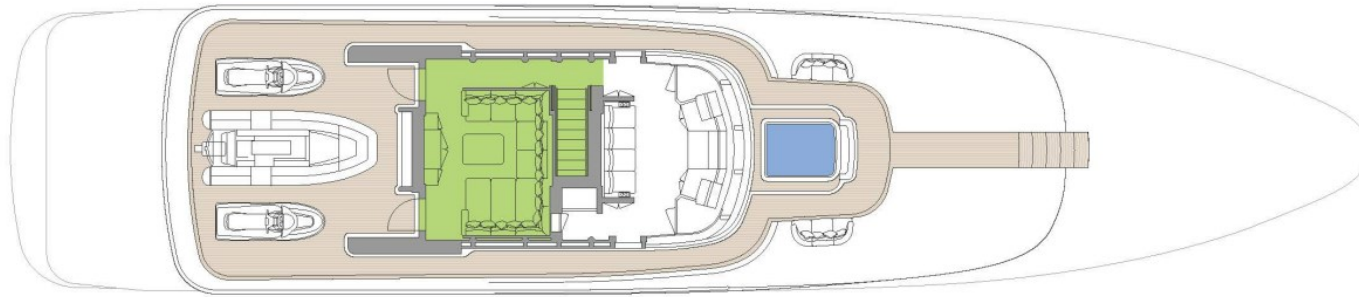
Recent major maintenance period completed in 2023 consisting of her five year survey, main engines serviced, stabilizers serviced, new water heaters, upgraded AV system, and more

Tenders

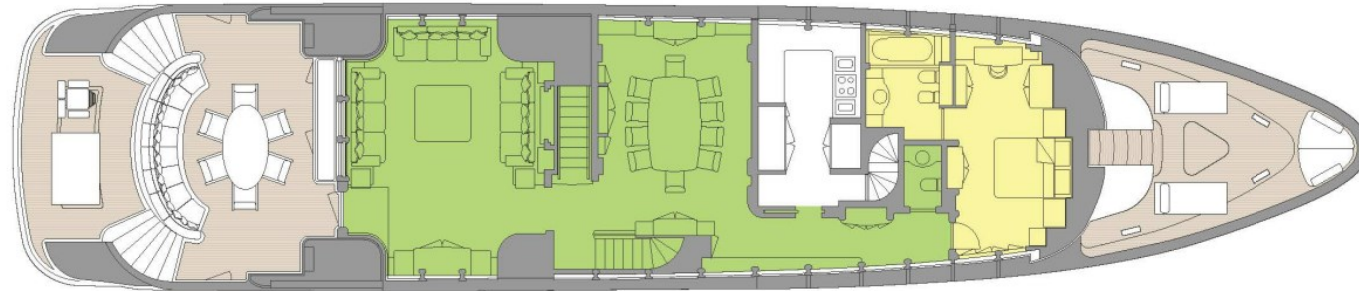
5.4m Mike Pearce NZ Tender

CRYSTAL LADY

Deck plans



UPPER DECK



MAIN DECK



LOWER DECK

■ GUEST AREAS ■ MASTER SUITE ■ GUEST CABINS ■ JACUZZI

BURGESS

WORLD CLASS. WORLD WIDE.

London +44 20 7766 4300	Monaco +377 97 97 81 21	New York +1 212 223 0410	Miami +1 305 672 0150	Singapore +65 9665 8990	Beverly Hills +1 310 424 5112	Palma +34 971 495 413	Athens +30 210 967 1661
Dubai +971 4 425 5874	Phuket +66 7623 9739	Hong Kong +852 6496 2094	Tokyo +81 46 738 8612	Sydney +61 499 945 557	Mumbai +91 98211 67253	Rio de Janeiro +55 21 2553-3238	Shanghai +86 187 0898 6800
Guernsey +44 1481 735360							

Advertising of these vessel(s) in printed publications, on the internet or in any other medium is not permitted without prior written permission from Burgess. All particulars are given in good faith and are believed correct but they cannot be guaranteed.

Last updated: 28 abril 2026