

# ARROW

---



ARROW

# OVERVIEW.

**The 75m 2020 Feadship ARROW is the latest superyacht from the reputable Dutch builder to enter the charter market and her sensational spaces inside and out blow other yachts out of the water.**

With interior and exterior design by H2, ARROW yacht (formerly known as Project 703) is a glossy and state-of-the-art yacht that combines supreme build quality with plenty of room for socialising and entertaining. From the off, the scene is set in the main salon with lots of varnished teak and backlit marble creating a lavish lounge, where offset settees curve into each for a more intimate atmosphere.

Formal dining for 12 round a glass table lies beyond and further still there's a cinema area with surround sound. Up in the bridge deck sky lounge, doors open up to the aft terrace seamlessly, where guests can enjoy alfresco dining under the protection of retractable glass panels or chill out in the lounge area aft and enjoy enviable vistas through the infinity view glass bulwarks.

An ARROW yacht charter can accommodate 12 guests across six cabins, including a main deck master, a bridge deck VIP and three further doubles and a twin cabin on the lower deck. Charter guests will love her exquisite sun deck, with its partially transparent Jacuzzi with sunpads forward, pizza oven and barbecue area, gym – which can be either open or enclosed – a cool sit-up bar and lots of lounging options, including C-shaped sofas aft with more infinity views.

However, ARROW yacht's standout feature is surely her full-beam beach club, which transforms into a sea-level evening entertaining lounge. There's a bar, lots of seating and access to the massage room and steam shower. And, of course, during the day this is the hub of activity for guests who want to try out the plethora of water toys or hop aboard one of three tenders. Guests on an ARROW yacht charter can expect the highest levels of quality and service, while a glass elevator from the lower deck to the bridge deck makes it an ideal base for multigenerational charters. With stabilisers at anchor and underway, ARROW yacht assures a smooth charter and your guests will want for nothing.

## Key features

---

**Beach club at sea level**

---

**Spa facilities: massage room, steam room**

---

**Fully equipped glass gym with panoramic views on sun deck**

---

**10m Yacht Werft Meyer tender**

---

**Masseuse part of the crew**

---

**Elevator serving the lower to bridge decks**

---

**Jacuzzi on the sun deck**

---

**Zero speed stabilisers to reduce any rolling motion while at anchor**

---

ARROW

Aerial view



Cruising



Sun deck forward jacuzzi



Sun deck aft bar



BURGESS

Discover the difference.  
burgessyachts.com

ARROW

Sun deck aft seating area



Upper deck aft dining area



Upper deck aft



Foredeck dining area



BURGESS

Discover the difference.  
burgessyachts.com

ARROW

Beach club



Swim platform



Main deck lounge



Main deck lounge



BURGESS

Discover the difference.  
[burgessyachts.com](http://burgessyachts.com)

ARROW

Main deck dining area



Sky lounge



Main deck master cabin



Main deck master office



BURGESS

Discover the difference.  
burgessyachts.com

ARROW

Master bathroom en suite



Master bathroom en suite



Lower deck double cabin



Lower deck double cabin



BURGESS

Discover the difference.  
burgessyachts.com

**ARROW**

Lower deck double cabin



Lower deck twin cabin



Upper deck VIP cabin



Main deck media/cinema room



ARROW

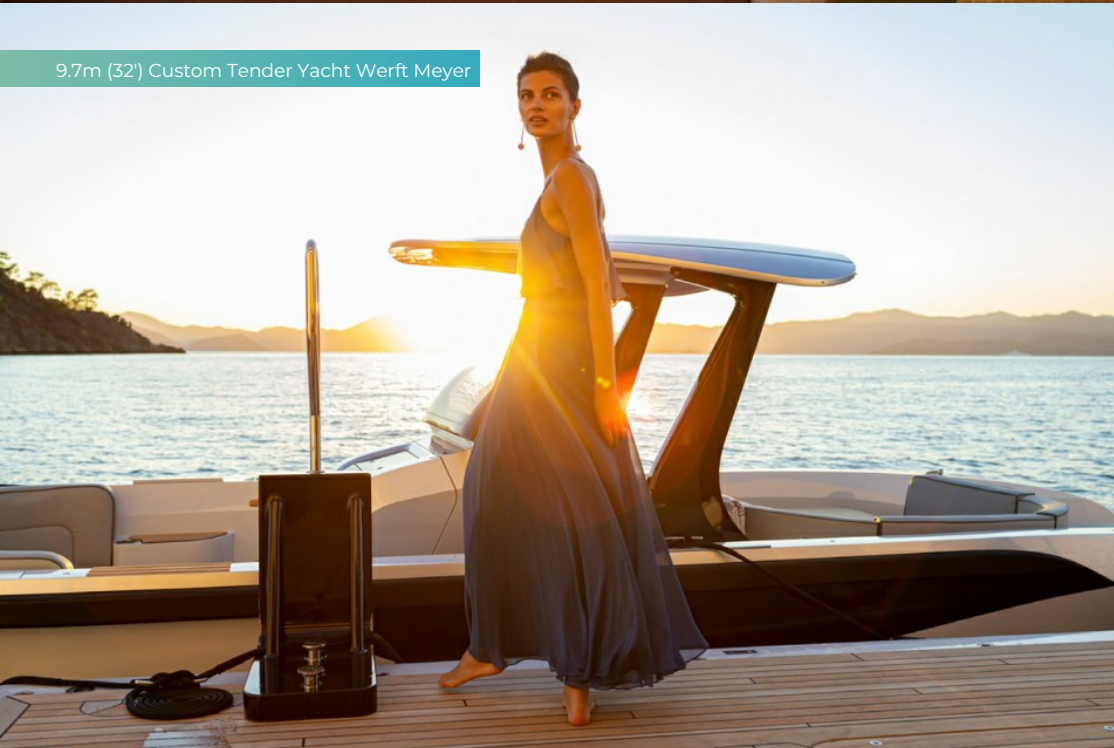
Lower deck massage room



Hammam



9.7m (32') Custom Tender Yacht Werft Meyer



Watersports

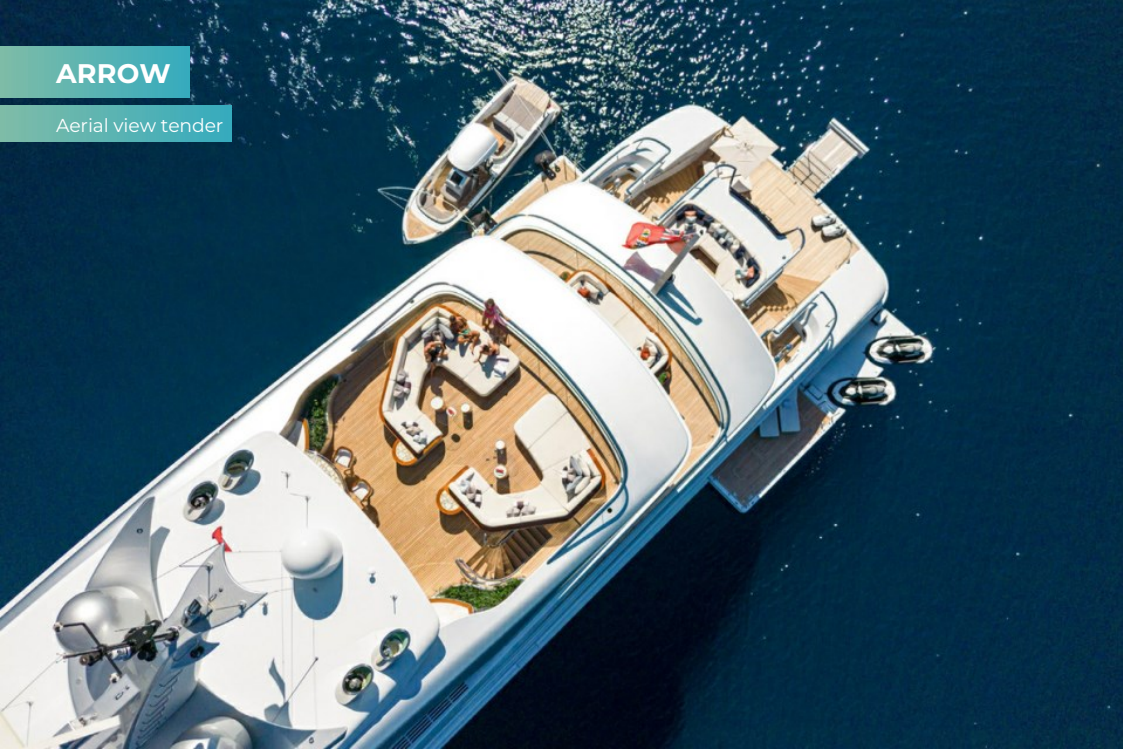


BURGESS

Discover the difference.  
burgessyachts.com

ARROW

Aerial view tender



Aerial view



BURGESS

Discover the difference.  
[burgessyachts.com](http://burgessyachts.com)

ARROW

# SPECIFICATION.



Length  
**75m (246ft)**



Built  
**2020, Feadship, De Vries, The Netherlands**



Interior designer  
**H2 Yacht Design**



Beam  
**12,9m (42,3ft)**



Draft  
**3,8m (12,5ft)**



Gross tonnage  
**1.891**



Cruising speed  
**13 knots**



Maximum speed  
**17 knots**



Fuel consumption at cruising speed  
**480 litres per hour**



Engines  
**2 x 2.467hp MTU**



Guests  
**12**



No. of guest cabins  
**6 (5 x double, 1 x twin, 2 x additional berths)**



Crew  
**19**

## Note

Registered under the Yacht Engaged in Trade scheme (YET). All Mediterranean charters must start in either the South of France, Monaco or Corsica. For all charters, the principal charterer must be a non-EU resident.

[View yacht on website](#)



ARROW

# TENDERS & TOYS

-  2 × Tenders
-  1 × Deck jacuzzi
-  2 × Waverunners
-  1 × Stand up jetski
-  2 × SeaBobs
-  2 × Subwings
-  2 × eFoils
-  1 × Jetsurf
-  2 × Kayaks
-  4 × Stand up paddleboards
-  Wakeboard
-  Waterskis
-  Anti-jellyfish pool
-  Trampoline
-  Inflatable toys
-  Scuba diving equipment
-  Snorkelling gear
-  RYA training centre for jetskis & waverunners

9.7m Custom Yacht Werft Meyer tender, 9.2m D-Rib Custom Yacht Werft Meyer tender, 6.2m Custom Yacht Werft Meyer tender, 2 x Sea-Doo Spark waverunners, Yamaha Super Jet stand up jetski, 2 x F5S SeaBobs, 2 x kayaks, 2 x rigid stand up paddle boards, 2 x inflatable stand up paddle boards, 2 x Lift eFoils, E-Jet surf, waterskis, wakeboards, large sea pool, towable inflatable toys, scuba diving equipment, snorkelling gear, 2 x specialised E-Mountain bikes. Approved RYA training centre for guests' use of personal watercraft (jetskis)

ARROW

# FITNESS & WELLNESS



Cross trainer



Exercise balls



Free weights



Jump ropes



Multi gym



Training bench

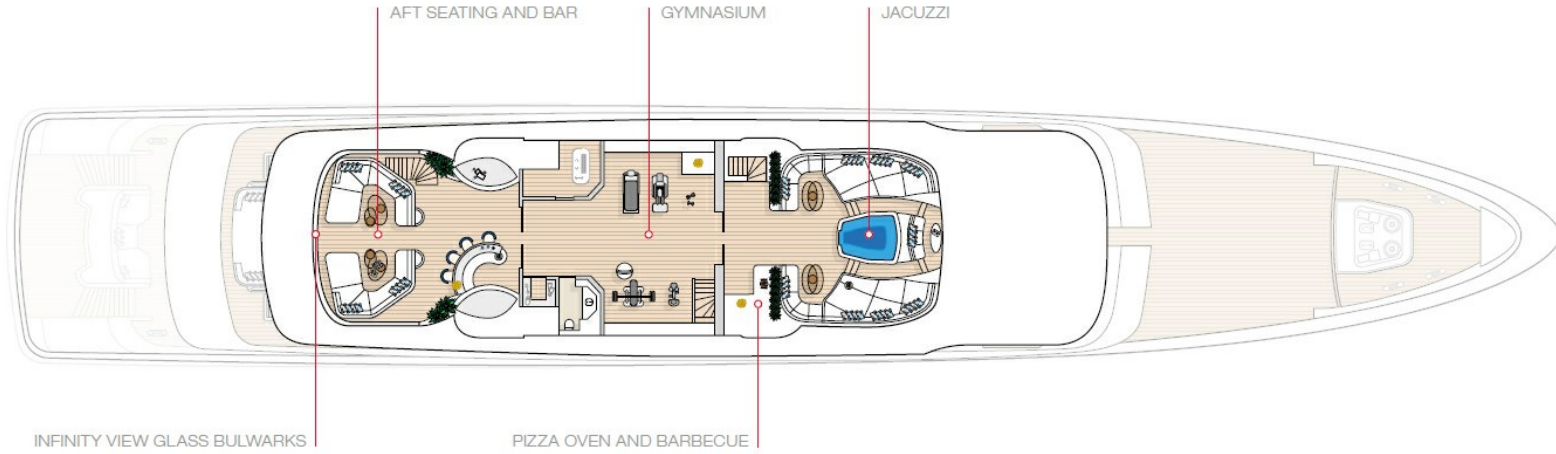


Treadmill

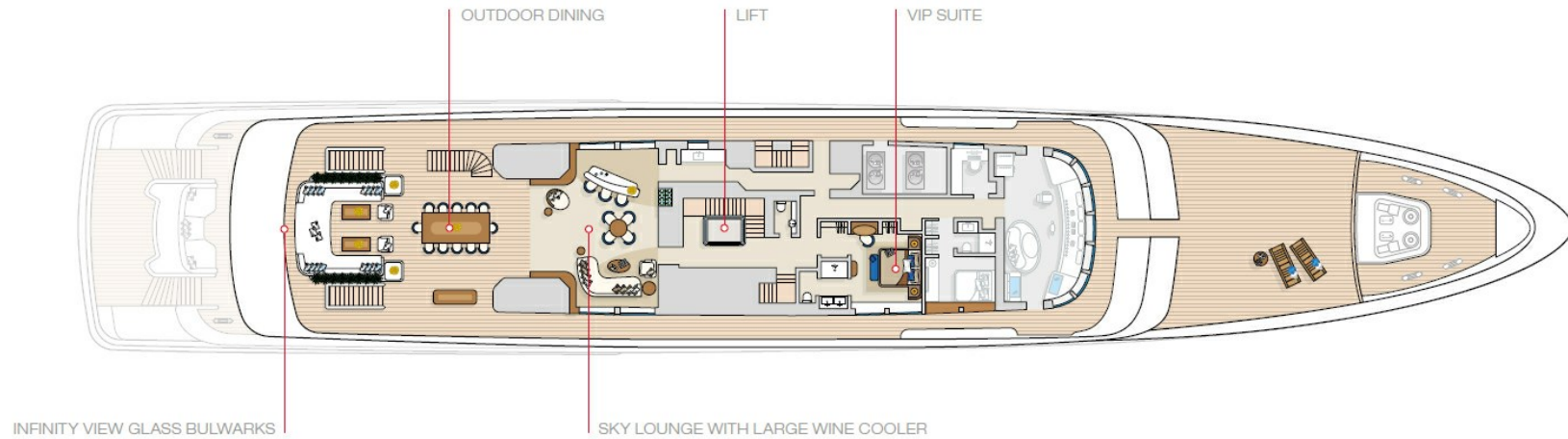


Yoga mats

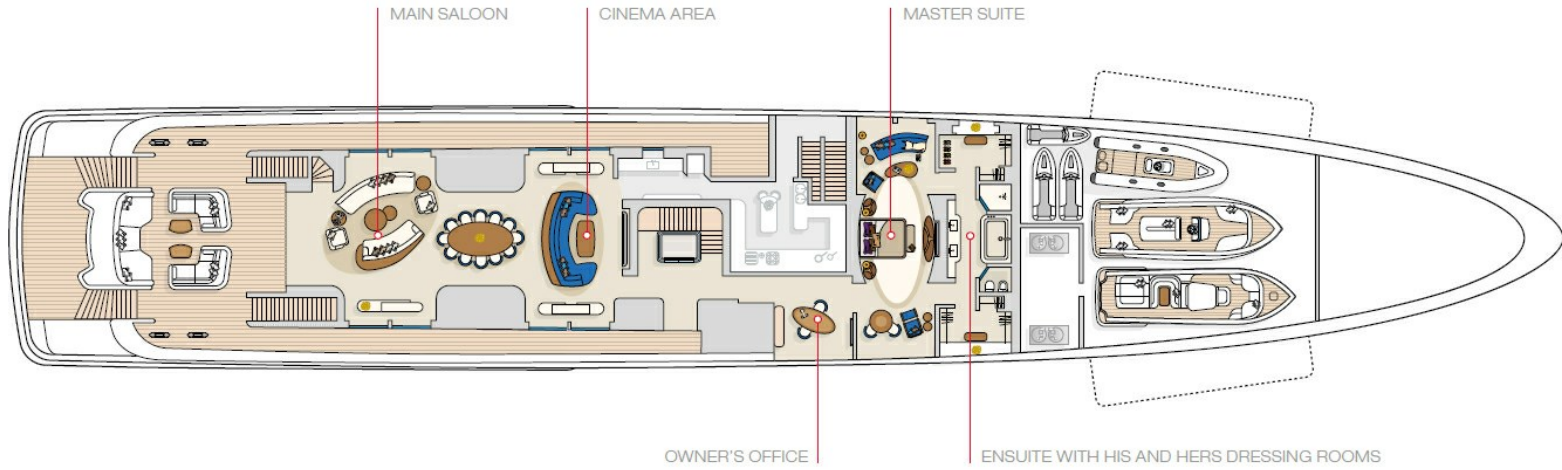
### Sun Deck



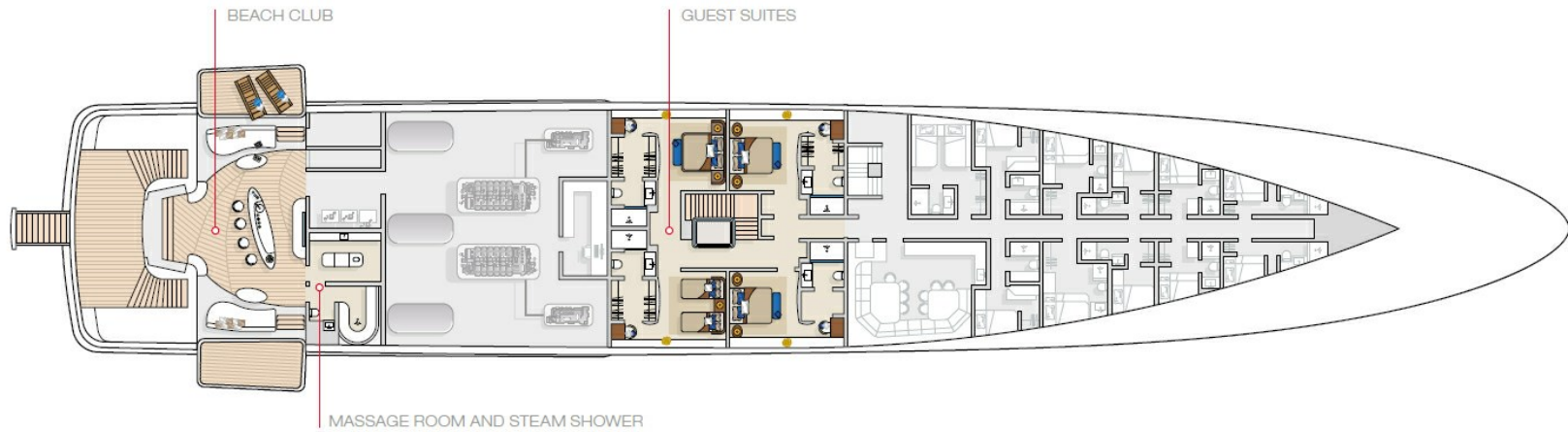
### Bridge Deck



# Main Deck



# Lower Deck



# BURGESS

# WORLD CLASS. WORLD WIDE.

<b>London</b> +44 20 7766 4300	<b>Monaco</b> +377 97 97 81 21	<b>New York</b> +1 212 223 0410	<b>Miami</b> +1 305 672 0150	<b>Singapore</b> +65 9665 8990	<b>Beverly Hills</b> +1 310 424 5112	<b>Palma</b> +34 971 495 413	<b>Athens</b> +30 210 967 1661
<b>Dubai</b> +971 4 425 5874	<b>Phuket</b> +66 7623 9739	<b>Hong Kong</b> +852 6496 2094	<b>Tokyo</b> +81 46 738 8612	<b>Sydney</b> +61 499 945 557	<b>Mumbai</b> +91 98211 67253	<b>Rio de Janeiro</b> +55 21 2553-3238	<b>Shanghai</b> +86 187 0898 6800
<b>Guernsey</b> +44 1481 735360							

Advertising of these vessel(s) in printed publications, on the internet or in any other medium is not permitted without prior written permission from Burgess. All particulars are given in good faith and are believed correct but they cannot be guaranteed.

Last updated: 28 abril 2026