

# AD LIB

---



AD LIB

# SPECIFICATION.



Asking price  
**EUR 9.500.000**



Built  
**2006, Alloy Yachts, New Zealand**



Length  
**40m (131,2ft)**



Beam  
**8,5m (27,8ft)**



Draft  
**1,9m (6,2ft)**



Gross tonnage  
**294**



Cruising speed  
**13 knots**



Maximum speed  
**16,5 knots**



Flag  
**Cayman Islands**



Lying  
**West Mediterranean**



Class  
**Lloyd's Register (LR) Lloyd's Register**



Exterior designer  
**Dubois Naval Architects**



Interior designer  
**Donald Starkey**



Construction  
**Hull - Aluminium, Superstructure - Aluminium,  
Deck - Teak**



Crew  
**6**



Guests  
**9**



Cabins  
**4 (3 × double, 1 × twin, 1 × additional berth)**



Engines  
**2 × 1.450hp Caterpillar**



Generators  
**2**



Propulsion  
**Twin screw diesel yacht**

## Note

Not available for sale to US residents while in US waters.

[View yacht on website](#)



AD LIB



BURGESS

Discover the difference.  
[burgessyachts.com](http://burgessyachts.com)

AD LIB



BURGESS

Discover the difference.  
burgessyachts.com



AD LIB



BURGESS

Discover the difference.  
[burgessyachts.com](http://burgessyachts.com)

AD LIB



BURGESS

Discover the difference.  
[burgessyachts.com](http://burgessyachts.com)

AD LIB



BURGESS

Discover the difference.  
[burgessyachts.com](http://burgessyachts.com)

# OVERVIEW.

**AD LIB is a 40m (131.2ft) displacement motor yacht built by the renowned New Zealand shipyard Alloy Yachts in 2006. She has an aluminium hull and superstructure, with an exterior design by Ed Dubois and interior by Donald Starkey. AD LIB was built to Lloyd's Register classification and has been used privately under her original owner.**

AD LIB can accommodate 9 guests in four cabins. The guest accommodation is on the lower deck. It comprises two double-berth suites and one twin-berth cabin with additional pullman berth. All guest cabins have en suite bathrooms with separate shower compartments. Port forward is a designated gym area. Forward of the guest accommodation is the galley, crew mess and accommodation for six crew. On the main deck, the owner's suite is forward. It has sofa seating to starboard and is accessed via the owner's private office. Forward, the suite has separate his and hers en suite bathrooms with a shared central shower room. Aft in the suite is a large dressing room. Moving aft from the office, steps lead to the raised wheelhouse and onto the flybridge. In the main salon, there is a formal dining area forward and a lounge area to the rear. A bistro table and chairs sit at the saloon entrance from the aft deck.

On her sun deck, AD LIB has a forward flybridge area with forward-facing bench seating and steps to the wheelhouse. Aft is a hardtop – with skylight windows in the forward section. Beneath the hardtop is situated an al fresco dining area with bench seating running outboard on both sides. Towards the rear is a wet bar and BBQ area while on the aft deck is a jacuzzi and sunpad area. Steps to starboard lead to the main deck. The aft main deck features a formal al fresco dining area with forward-facing seating to the rear. Overhead, is a retractable sun awning. A wet bar area is located by the main saloon entrance. There is a large raised sunpad area forward, accessed via steps from the foredeck.

AD LIB has a side-opening tender garage whilst on the foredeck is located the rescue tender and waverunner.

She is powered by two 1,450 hp Caterpillar 3412E engines these give her a cruising speed of 13 knots and a maximum speed of 16 knots. She has a cruising range of approximately 4,500nm at an economical speed of 10 knots and is fitted with NAIAD zero speed stabilisers.

## Key features

---

**Accommodation for 9 guests in four cabins**

---

**Spacious flybridge area with dining, jacuzzi and wet bar**

---

**Private use under original owner**

---

**Full beam master cabin with private office, his and hers bathrooms, and walk-in wardrobe**

---

**Side opening tender garage**

---

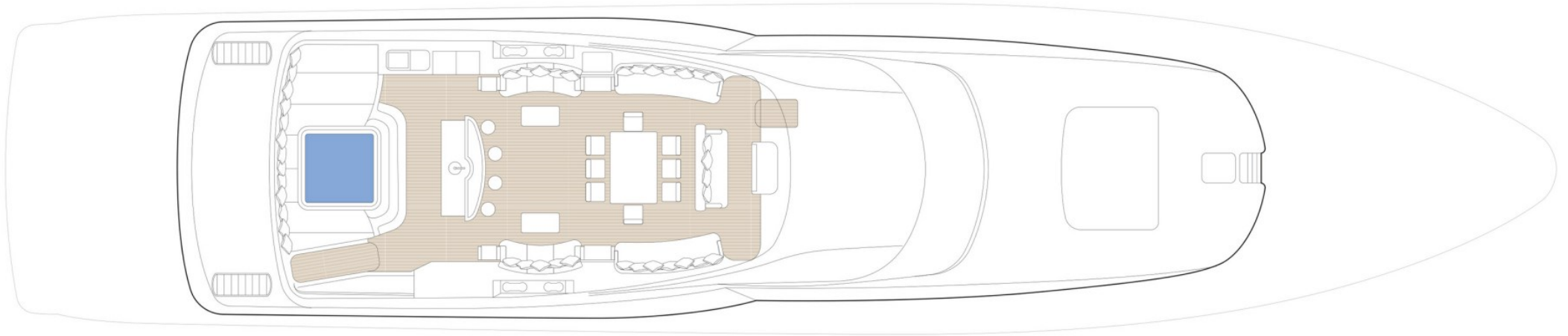
**Private use under original owner**

---

**Lloyd's Register classification**

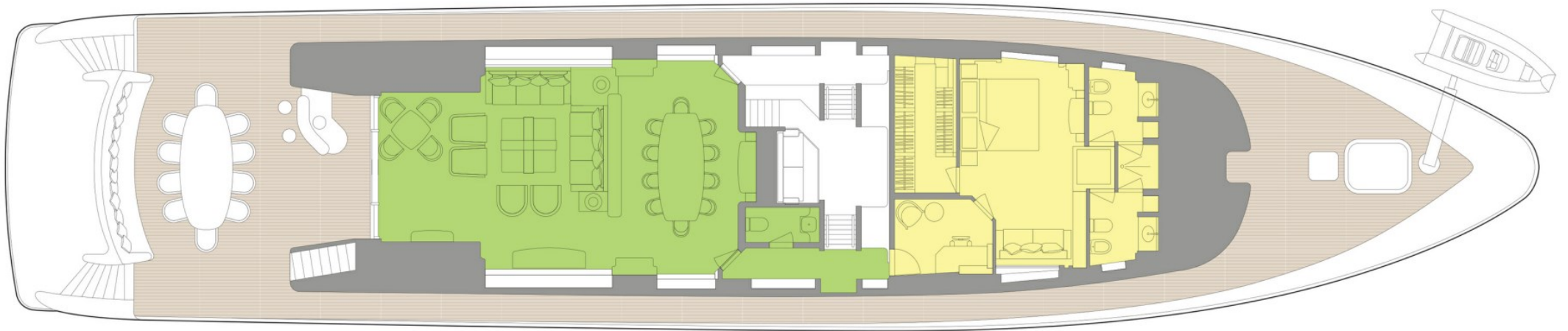
---

# SUN DECK



■ GUEST AREAS   ■ MASTER SUITE   ■ GUEST CABINS   ■ GYM   ■ JACUZZI

# MAIN DECK



- GUEST AREAS
- MASTER SUITE
- GUEST CABINS
- GYM
- JACUZZI

# LOWER DECK



 GUEST AREAS  MASTER SUITE  GUEST CABINS  GYM  JACUZZI

# BURGESS

# WORLD CLASS. WORLD WIDE.

<b>London</b> +44 20 7766 4300	<b>Monaco</b> +377 97 97 81 21	<b>New York</b> +1 212 223 0410	<b>Miami</b> +1 305 672 0150	<b>Singapore</b> +65 9665 8990	<b>Beverly Hills</b> +1 310 424 5112	<b>Palma</b> +34 971 495 413	<b>Athens</b> +30 210 967 1661
<b>Dubai</b> +971 4 425 5874	<b>Phuket</b> +66 7623 9739	<b>Hong Kong</b> +852 6496 2094	<b>Tokyo</b> +81 46 738 8612	<b>Sydney</b> +61 499 945 557	<b>Mumbai</b> +91 98211 67253	<b>Rio de Janeiro</b> +55 21 2553-3238	<b>Shanghai</b> +86 187 0898 6800
<b>Guernsey</b> +44 1481 735360							

Advertising of these vessel(s) in printed publications, on the internet or in any other medium is not permitted without prior written permission from Burgess. All particulars are given in good faith and are believed correct but they cannot be guaranteed.

Last updated: 28 abril 2026