

# ABILITY

---



ABILITY

# OVERVIEW.

## Key features

---

**Recently refitted**

---

**A crew with local expertise**

---

**Flexible cabin configuration**

---

ABILITY

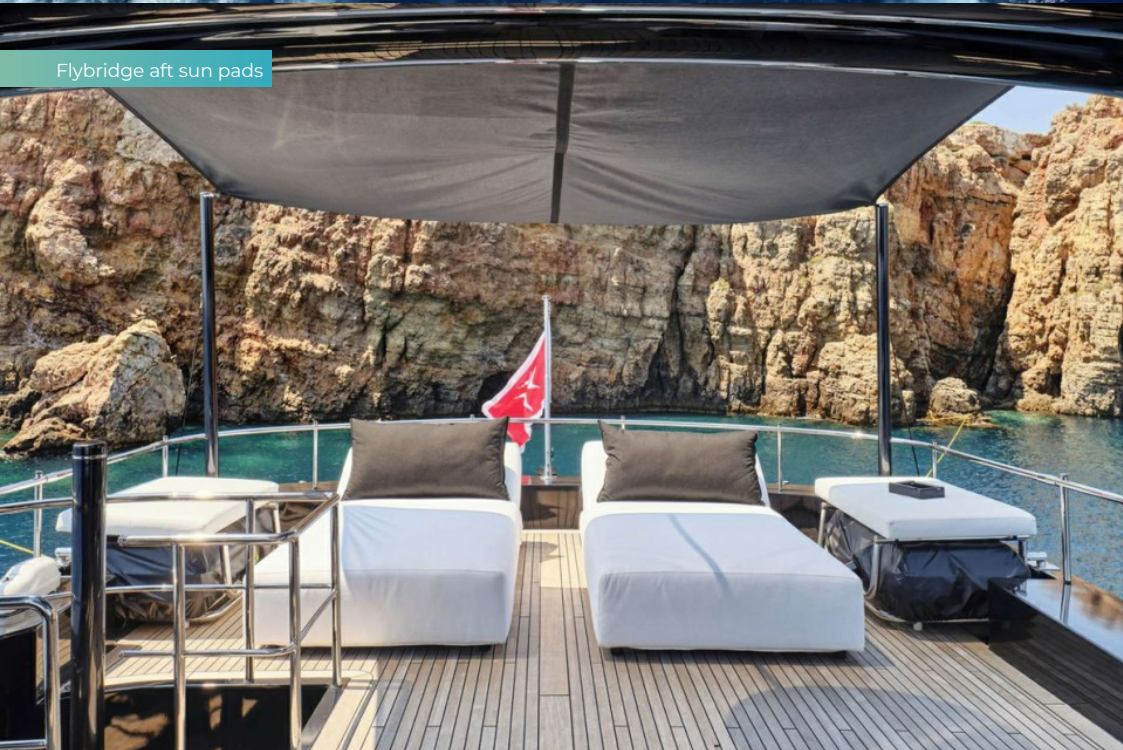
Aerial view



Flybridge



Flybridge aft sun pads



Main deck aft



ABILITY

Main deck aft



Main deck aft



Foredeck dining area



Main deck lounge



ABILITY

Main deck lounge



Main deck dining area



Lower deck master cabin



Lower deck master cabin



ABILITY

Lower deck VIP cabin



Lower deck double cabin with pullman



Lower deck convertible office/double cabin



Lower deck twin cabin



ABILITY

Toys



BURGESS

Discover the difference.  
[burgessyachts.com](http://burgessyachts.com)

## ABILITY

# SPECIFICATION.



Length  
**42m (137,8ft)**



Built  
**2007 (refitted 2023), Codecasa, Italy**



Interior designer  
**Della Role Design**



Beam  
**8m (26,2ft)**



Draft  
**1,4m (4,6ft)**



Gross tonnage  
**286**



Cruising speed  
**28 knots**



Maximum speed  
**33 knots**



Fuel consumption at cruising speed  
**1.300 litres per hour**



Engines  
**3 x 2.400hp MTU**



Guests  
**11**



No. of guest cabins  
**5 (4 x double, 1 x twin, 1 x additional berth)**



Crew  
**8**

### Note

Fully licensed for charters in Greek waters. Not available for charter to EU residents while in EU waters.

[View yacht on website](#)

[Watch yacht video](#)



ABILITY

# TENDERS & TOYS



1 x Tender



1 x Waverunner



2 x SeaBobs



2 x Stand up paddleboards



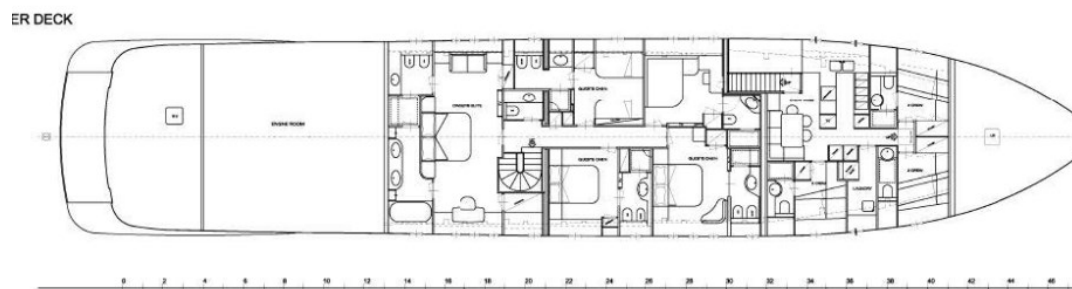
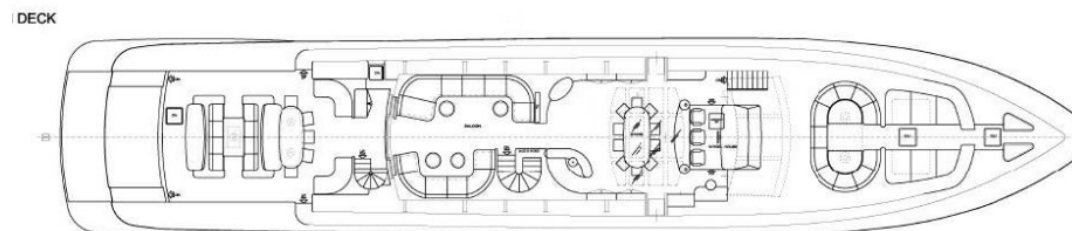
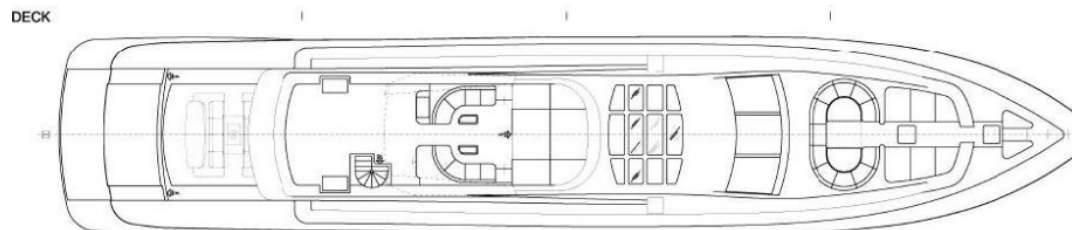
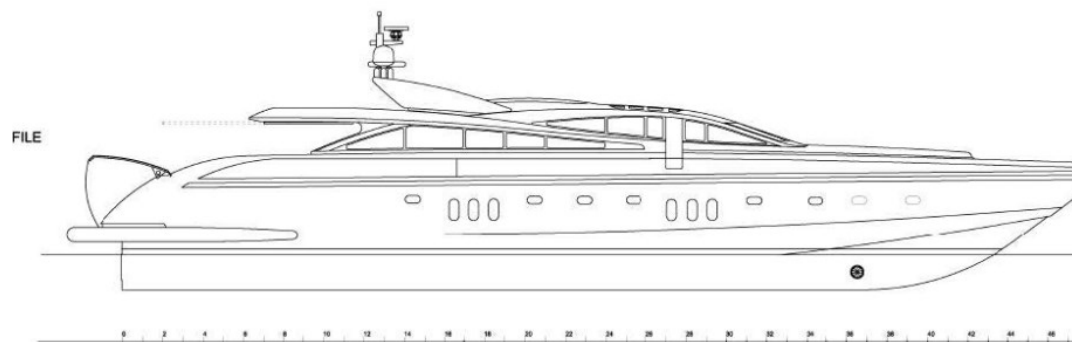
Wakeboard



Waterskis



Inflatable tows



dis. n° <b>69.01.PG.26</b>		<b>CANTIERI NAVALI CODECASA UGO :</b>	
NUM. FILE:		59040 VAREGGIO - ITALIA TEL. +39 0564 383221 - FAX +39 0564 328031 - e-mail info@codecasayachts.com www.codecasayachts.com	
DATA: <b>FEBBRAIO 2006</b>	COSTRUZIONE :	<b>CODECASA 41 F 69</b>	
SCALA: <b>1 : 100</b>	OGGETTO :	<b>PROFILE AND GENERAL ARRANGEMENT PL</b>	
DWG.:			
TAV. No. 4			
NOTE : <b>This drawing is a design concept. Exact dimensions and positions are not to be taken from this drawing.</b>			
vietata la riproduzione e la comunicazione a terzi / all rights of this drawing are reserved			

# BURGESS

# WORLD CLASS. WORLD WIDE.

<b>London</b> +44 20 7766 4300	<b>Monaco</b> +377 97 97 81 21	<b>New York</b> +1 212 223 0410	<b>Miami</b> +1 305 672 0150	<b>Singapore</b> +65 9665 8990	<b>Beverly Hills</b> +1 310 424 5112	<b>Palma</b> +34 971 495 413	<b>Athens</b> +30 210 967 1661
<b>Dubai</b> +971 4 425 5874	<b>Phuket</b> +66 7623 9739	<b>Hong Kong</b> +852 6496 2094	<b>Tokyo</b> +81 46 738 8612	<b>Sydney</b> +61 499 945 557	<b>Mumbai</b> +91 98211 67253	<b>Rio de Janeiro</b> +55 21 2553-3238	<b>Shanghai</b> +86 187 0898 6800
<b>Guernsey</b> +44 1481 735360							

Advertising of these vessel(s) in printed publications, on the internet or in any other medium is not permitted without prior written permission from Burgess. All particulars are given in good faith and are believed correct but they cannot be guaranteed.

Last updated: 28 abril 2026